




Specification

Seating Capacity	5-6 Person	
Dimensions	84"X 84" X 39" / (213 cm X 213 cm X 99 cm)	
Dry Weight	794 lbs / 360 kg	
Filled Weight (Spa Volume)	3,353 lbs / 1,521 kg	
Water Capacity (Spa Volume)	305 US gallons / 1,161 L	
Electronic Controls	GECKO-IN. K1000 Spa Keypad	
Pump 1	North America (60 Hz): 2- Speed, 4 HP, AMPs 12.0/1.0 Europe (50 Hz): 2- Speed, 3 HP, AMPs 10.0/3.0	
Pump 2	N/A	
Circulation Pump	North America (60 Hz):1- Speed, 1/12 HP, AMPs 0.8 Europe (50 Hz): 1- Speed, 0.250 KW- HP, AMPs 1	
Total Jets	39	
Seat A Jets	(2)-6020070; (1)-6030065	
Seat B Jets	(4)-615050; (4)-6015053	
Seat C Jets	(1)-6030066	
Seat D Jets	(1)-6015050; (2)-6030064; (2)-6030065; (2)-6030066; (2)-6015054	
Seat E Jets	(1)-6030066	
Seat F Jets	(8)-6015050; (6)-6015059; (1)-6035061	
Footwell	(2)-6030067	
Massage Selectors	YES	
Air Controls	2	
Water Management System	Pure Water System	
LED Lighting	(1) Self Clean Plate with 20 LED lights	
Synthetic Cabinet Colours	Midnight Everlast, Driftwood Design	
Acrylic Colours	Alpine Mist, Midnight Canyon, Silver Marble, Tuscan Sun, Pure White, Black Opal.	
Headrests	(2)- 8" Pillow Assembly; (2)- Small wrap Pillows	
Electrical Requirements	North America (60 Hz): 240 V,32 AMP GFCI RATED: 40 AMPs Europe (50 Hz):230V, 16A or suitably rated circuit breaker to comply with local electrical codes. RCD breakers with MC.	
Warranty	10/5/3 Year limited	
Options/ Special Features	<ol style="list-style-type: none"> 1) Northern Falls Package Include: <ul style="list-style-type: none"> • Cascading Hydro fall (includes 3 laminar waterfalls and on/off controller) • Northern Lights (includes 2 LED Cupholders and all other topside controls are lit) 2)Chromotherapy Package Include: <ul style="list-style-type: none"> • Deluxe LED & GDN Fx Lighting (includes 3 additional 20 LED Small Lights and Exterior Cabinet Lights shining on the step entry) • Northern Lights (includes 2 LED Cupholder and all other topside controls are lit) 3)Tranquillity Package Includes: <ul style="list-style-type: none"> • Deluxe LED & GDN Fx Lighting (includes 3 additional 20 LED Small Lights and Exterior Cabinet Lights shining on the step entry) • Two Premium Hydro Fall Pillows (includes the waterfalls and an on/off controller Waterfalls are lit) 4)Hydrotherapy Package Includes: <ul style="list-style-type: none"> • Hydro Flex Air Therapy System-Heated (includes round keypad controller, variable Speed box and air blower • Dream Scents on Demand (includes liquid canister and injection air jet) 5)Hydrotherapy: <ul style="list-style-type: none"> • Hydro Flex Air Therapy -Heated 5)Covers: <ul style="list-style-type: none"> • Custom Hydro wise Insulating Cover Colour • Opposite Fold Hardcovers • Cover Remover Standard • Cover Remover LP(Under) • Cover Remover Plus 6)Lighting: <ul style="list-style-type: none"> • Deluxe LED & GDN Fx Lighting (Hydro Fall pillows Lit if ordered) 7)Water Management: <ul style="list-style-type: none"> • EZ- Pure Ozone System (Must delete Pure water) 8)Steps: <ul style="list-style-type: none"> • Two Tier Universal Step 9)Other Popular Upgrades & Options: <ul style="list-style-type: none"> • GFCI • I Command System 	



Massage Selector/Air Control Diagram

SSC: Swivel seat control.
Turn **LEFT** to control jets on first column in seat B and **RIGHT** to control last column

ACP 1(LEFT): Opens/Closes; Air inlet to all jets in the **LEFT** to seat B, C, D

ACP 1(RIGHT): Opens/Closes; Air inlet to all jets in all seats in the **RIGHT** A, E, F



Massage Selector 1: Turn **LEFT** to seat B, C, D **RIGHT** to seat A, E, F and **MIDDLE** to all seats

CHC: To turn ON/OFF Hydro falls

HPC: To turn ON/OFF Pillow Hydro falls

AT: Hydro flex Air Therapy



(6015050) (6015053) (6015054) (6015059) (6020070)

(6030064) (6030065) (6030066) (6030067) (6035061)

ACP1- Air controller Pump 1
HPC- Hydro fall Pillow Controller
CHC- Cascading Hydro falls Control

Seat Depth

A = 24.75" (62.87cm)

D = 28.375" (72.07cm)

B = 25.00" (63.50cm)

E = 24.75" (62.87cm)

C = 26.25" (66.68cm)

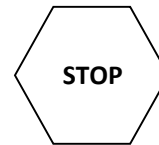
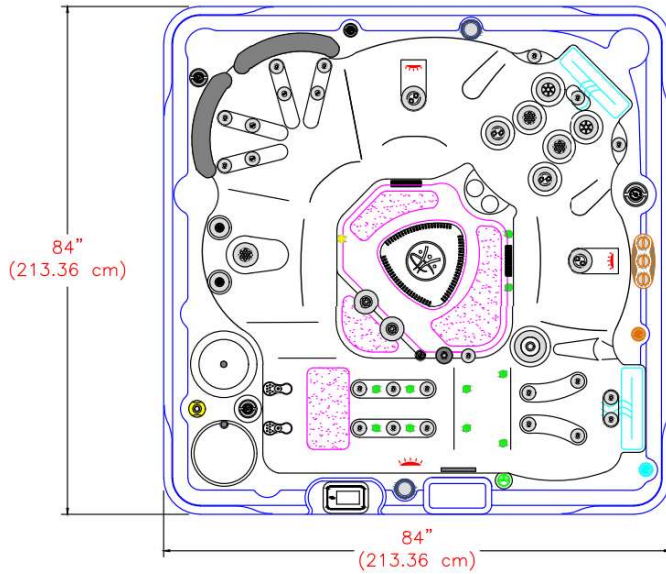
F = 26.25" (66.68cm)



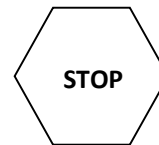
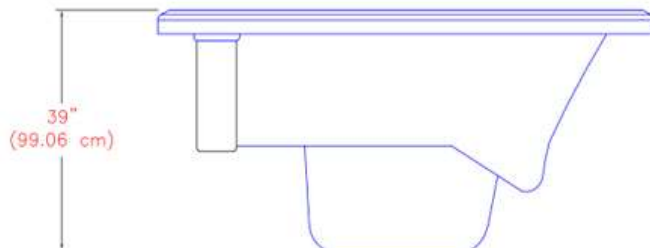
LISTED DIMENSIONS REPRESENT DISTANCE FROM THE TOP OF ACRYLIC TO LOWEST POINT IN THE SEAT. TOLERANCE ±1/16" (0.158CM)



Dimensions



IMPORTANT! Always measure each hot tub for exact dimensions BEFORE designing its foundational support and/or decking



NOTE:

Dimensional tolerances are as follows due to variations in manufacturing:

Length / Width / Height(s): +/- 3/8"

Height Variance (side to side): +/- 1/4"





2023 SIGNATURE SELF CLEAN 670 GOLD



Year:	2023
Model:	Self-Clean 670 Gold
Size:	84"X 84" X 39" / (213 cm X 213 cm X 99 cm)
Series:	Self-Cleaning Gold Series
Main Keypad:	IN. K1000 Keypad (7005088)
Spa Pack and Heater:	Heater: 4 KW 240 V (NA) & 3 KW 230V (EU) Controller GECKO IN.YE-3-V3 NA / EU
Pump #1:	North America (60 Hz): 2- SP, 4 HP, AMPs – 12.0/1.0 (6505155) Europe (50 Hz): 2- SP, 3 HP, AMPs – 10.0/3.0 (6510041)
Pump #2:	N/A
Circulation Pump:	North America (60 Hz): 1- Speed, 1/12 HP, AMPs 0.8 (6505160) Europe (50 Hz): 1- Speed, 0.250 KW- HP, AMPs 1 (6510046)
39 Total Jets:	13- CLUSTERSTORM JET- DIRECTIONAL (6015050) , 4- CLUSTERSTORM JET- TWIN ROTO (6015053) , 2- CLUSTERSTORM JET- SHOULDER JET (6015054) , 6- UNIBODY OZONE CLUSTER JET (6015059) , 2- MINISTORM JET- MULTI-MASSAGE (6020070) , 2- POLYSTORM JET – RIFLED (6030064) , 3- POLYSTORM JET – PULSE MASSAGE (6030065) , 4- POLYSTORM JET – TWIN ROTO (6030066) , 2- POLYSTORM JET- DIRECTIONAL (6030067) , 1- POWERSTORM JET – DIRECTIONAL (6035061) ,
Air Controls:	(2)-Air Control (4525089)
Diverter:	(2)-2" Water Diverter (4525086)
Filters:	Self-Clean 75 SQ FT Filter (4520008)





Specification

Seating Capacity	5-6 Person
Dimensions	84" X 84" X 39" / (213 cm X 213 cm X 99 cm)
Dry Weight	794 lbs / 360 kg
Filled Weight (Spa Volume)	3,353 lbs / 1,521 kg
Water Capacity (Spa Volume)	305 US gallons / 1,161 L
Electronic Controls	GECKO-IN. K1000 Spa Keypad
Pump 1	North America (60 Hz): 2- Speed, 3 HP, AMPS 10.0/3.5 Europe (50 Hz): 2- Speed, 2.5 HP, AMPS 8.6/2.8
Pump 2	North America (60 Hz): 1- Speed, 4 HP, AMPS 12.0/1.0 Europe (50 Hz): 1- Speed, 4 HP, AMPS 14
Circulation Pump	North America (60 Hz):1- Speed, 1/12 HP, AMPS 0.8 Europe (50 Hz): 1- Speed, 0.250 KW- HP, AMPS 1
Total Jets	56
Seat A Jets	(2)-6020070; (1)-6015053; (1)-6030065
Seat B Jets	(4)-615050; (8)-6015053
Seat C Jets	(2)-6030066
Seat D Jets	(2)-6015050; (2)-6035062; (2)-6035063; (2)-6035064; (2)-6015054
Seat E Jets	(1)-6030066
Seat F Jets	(14)-6015050; (6)-6015059; (1)-6035061; (2)-6015059
Footwell	(2)-6035061; (2)-6015051
Massage Selectors	YES
Air Controls	3
Water Management System	Pure Water System
LED Lighting	(1) Self Clean Plate with 20 LED lights
Synthetic Cabinet Colours	Midnight Everlast, Driftwood Design
Acrylic Colours	Alpine Mist, Midnight Canyon, Silver Marble, Tuscan Sun, Pure White, Black Opal.
Headrests	(2)- 8" Pillow Assembly; (2)-Small wrap Pillows
Electrical Requirements	North America (60 Hz): 240 V,40 AMP GFCI RATED: 50 AMPS Europe (50 Hz):230V, 16A or suitably rated circuit breaker to comply with local Electrical codes. RCD breakers with MC.
Warranty	10/5/3 Year limited
Options/ Special Features	<p>1) Northern Falls Package Include:</p> <ul style="list-style-type: none"> • Cascading Hydro fall (includes 3 laminar waterfalls and on/off controller) • Northern Lights (includes 2 LED Cupholders and all other topside controls are lit) <p>2)Chromotherapy Package Include:</p> <ul style="list-style-type: none"> • Deluxe LED & GDN Fx Lighting (includes 3 additional 20 LED Small Lights and Exterior Cabinet Lights shining on the step entry) • Northern Lights (includes 2 LED Cupholder and all other topside controls are lit) <p>3)Tranquillity Package Includes:</p> <ul style="list-style-type: none"> • Deluxe LED & GDN Fx Lighting (includes 3 additional 20 LED Small Lights and Exterior Cabinet Lights shining on the step entry) • Two Premium Hydro Fall Pillows (includes the waterfalls and an on/off controller Waterfalls are lit) <p>4)Hydrotherapy Package Includes:</p> <ul style="list-style-type: none"> • Hydro Flex Air Therapy System-Heated (includes round keypad controller, variable speed box and air blower) • HydroTher Zone Lighting • Dream Scents on Demand (includes liquid canister and injection air jet) <p>5)Hydrotherapy Package Includes:</p> <ul style="list-style-type: none"> • Hydro Flex Air Therapy -Heated <p>6)Covers:</p> <ul style="list-style-type: none"> • Custom Hydro wise Insulating Cover Colour • Opposite Fold Hardcovers • Cover Remover Standard • Cover Remover LP(Under) • Cover Remover Plus <p>7)Lighting:</p> <ul style="list-style-type: none"> • Deluxe LED & GDN Fx Lighting (Hydro Fall pillows Lit if ordered) <p>8)Water Management:</p> <ul style="list-style-type: none"> • EZ- Pure Ozone System (Must delete Pure water) <p>9)Steps:</p> <ul style="list-style-type: none"> • Two Tier Universal Step <p>10)Other Popular Upgrades & Options:</p> <ul style="list-style-type: none"> • GFCI • I Command System





Massage Selector/Air Control Diagram

SSC: Swivel seat control.
Turn **LEFT** to control jets on seat A, B, C and **RIGHT** to control seat D, E, F.

ACP 1: Opens/Closes; Air inlet to all jets in seat B

Massage Selector 1: Turn **LEFT** to seat A, C, D **RIGHT** to seat B

ACP 1(RIGHT): Opens/Closes; Air inlet to all jets in seat A, C, Pillow Hydro falls

ACP 1(LEFT): Opens/Closes; Air inlet to all jets in seat A

HPC: To turn ON/OFF Pillow Waterfalls

Massage Selector 2: Turn **LEFT** to seat D **RIGHT** to seat E, F. **MIDDLE** to all seats.

CHC: To turn ON/OFF Hydro falls

HPC: To turn ON/OFF Pillow Waterfalls

AT: Hydro flex Air Therapy



ACP1- Air controller Pump 1
HPC- Hydro fall Pillow Controller
CHC- Cascading Hydro falls Control

Seat Depth

A = 24.75" (62.87cm)

D = 28.375" (72.07cm)

B = 25.00" (63.50cm)

E = 24.75" (62.87cm)

C = 26.25" (66.68cm)

F = 26.25" (66.68cm)

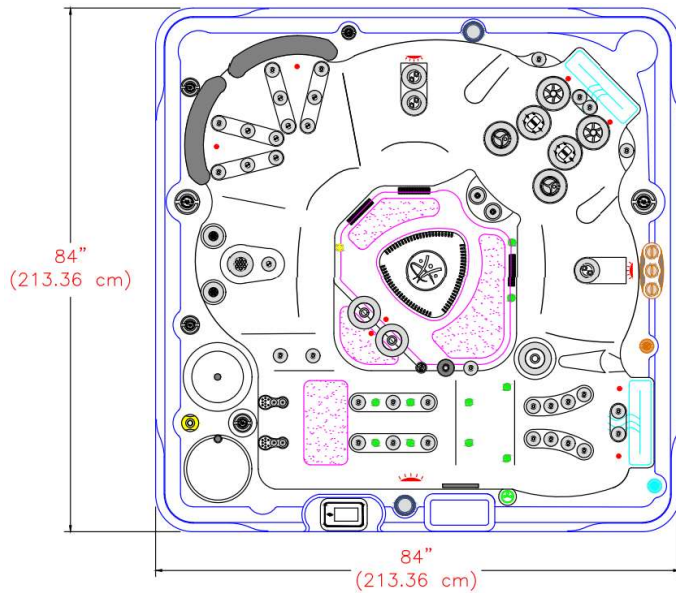


LISTED DIMENSIONS REPRESENT DISTANCE FROM THE TOP OF ACRYLIC TO LOWEST POINT IN THE SEAT. TOLERANCE ±1/16" (0.158CM)

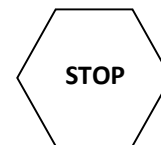
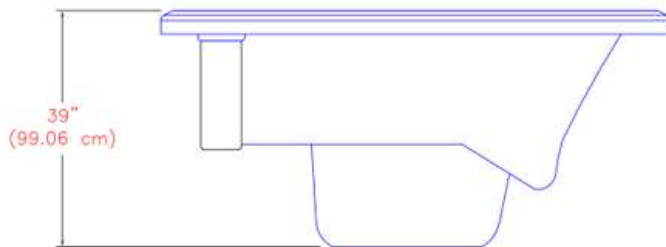




Dimensions



IMPORTANT! Always measure each hot tub for exact dimensions BEFORE designing its foundational support and/or decking



NOTE:

Dimensional tolerances are as follows due to variations in manufacturing:

Length / Width / Height(s): +/- 3/8"

Height Variance (side to side): +/- 1/4"





2023 SIGNATURE SELF CLEAN 670 PLATINUM



Year:	2023
Model:	Self-Clean 670 Platinum
Size:	84"X 84" X 39" / (213 cm X 213 cm X 99 cm)
Series:	Self-Cleaning Platinum Series
Main Keypad:	IN. K1000 Keypad (7005088)
Spa Pack and Heater:	Heater: 4 KW 240 V (NA) & 3 KW 230V (EU) Controller GECKO IN.YE-6 NA / IN-YE-5 EU
Pump #1:	North America (60 Hz): 2- Speed, 3 HP, AMPs 10.0/3.5 (6505159) Europe (50 Hz): 2- Speed, 2.5 HP, AMPs 8.6/2.8 (6510038)
Pump #2:	North America (60 Hz): 1- Speed, 4 HP, AMPs 12.0/1.0 (6505155) Europe (50 Hz): 1- Speed, 4 HP, AMPs 14 (6510040)
Circulation Pump:	North America (60 Hz): 1- Speed, 1/12 HP, AMPs 0.8 (6505160) Europe (50 Hz): 1- Speed, 0.250 KW- HP, AMPs 1 (6510046)
56 Total Jets:	20- CLUSTERSTORM JET- DIRECTIONAL (6015050) , 2- CLUSTERSTORM JET- RIFLED (6015051) , 9- CLUSTERSTORM JET- TWIN ROTO (6015053) , 2- CLUSTERSTORM JET- SHOULDER JET (6015054) , 8- UNIBODY OZONE CLUSTER JET (6015059) , 2- MINISTORM JET- MULTI-MASSAGE (6020070) , 1- POLYSTORM JET – PULSE MASSAGE (6030065) , 3- POLYSTORM JET – TWIN ROTO (6030066) , 3- POWERSTORM JET – DIRECTIONAL (6035061) , 2- POWERSTORM JET – RIFLED (6035062) , 2- POWERSTORM JET – RESONATOR (6035062) , 2- POWERSTORM JET- TWISTER (6035064)
Air Controls:	(3)-Air Control (4525089)
Diverter:	(2)- CMP 2016 2" Water Diverter (4525086)
Filters:	Self-Clean 75 SQ FT Filter (4520008)





Specification

Seating Capacity	5-6 Person
Dimensions	84"X 84" X 39" / (213 cm X 213 cm X 99 cm)
Dry Weight	812 lbs / 368 kg
Filled Weight (Spa Volume)	3,820 lbs / 1,733 kg
Water Capacity (Spa Volume)	359 US gallons / 1,365 L
Electronic Controls	GECKO-IN. K1000 Spa Keypad
Pump 1	North America (60 Hz): 2- Speed, 4 HP, AMPs 12.0/1.0 Europe (50 Hz): 2- Speed, 3 HP, AMPs 10.0/3.0
Pump 2	N/A
Circulation Pump	North America (60 Hz):1- Speed, 1/12 HP, AMPs 0.8 Europe (50 Hz): 1- Speed, 0.250 KW- HP, AMPs 1
Total Jets	39
Seat A Jets	(2)-6020069; (2)-6020070; (2)-6030066
Seat B Jets	(1)-6030066
Seat C Jets	(1)-6015050; (2)-6015054; (2)-6030064; (2)-6030065; (2)-6030066
Seat D Jets	(2)-6020070; (1)-6030065
Seat E Jets	(1)-6020071; (2)-6030064; (2)-6035066
Seat F Jets	(8)-6015050; (4)-6015059; (1)-6035061
Footwell	(2)-6030067
Massage Selectors	YES
Air Controls	2
Water Management System	Pure Water System
LED Lighting	(1) Self Clean Plate with 20 LED lights
Synthetic Cabinet Colours	Midnight Everlast, Driftwood Design.
Acrylic Colours	Alpine Mist, Midnight Canyon, Silver Marble, Tuscan Sun, Pure White, Black Opal.
Headrests	(2)- 8" Pillow Assembly; (1)-Small wrap Pillow
Electrical Requirements	North America (60 Hz): 240 V,32 AMP GFCI RATED: 40 AMPs Europe (50 Hz):230V, 16A or suitably rated circuit breaker to comply with local electrical codes. RCD breakers with MC.
Warranty	10/5/3 Year limited
Options/ Special Features	<p>1) Northern Falls Package Include:</p> <ul style="list-style-type: none"> • Cascading Hydro fall (includes 3 laminar waterfalls and on/off controller) • Northern Lights (includes 2 LED Cupholders and all other topside controls are lit) <p>2)Chromotherapy Package Include:</p> <ul style="list-style-type: none"> • Deluxe LED & GDN Fx Lighting (includes 3 additional 20 LED Small Lights and Exterior Cabinet Lights shining on the step entry) • Northern Lights (includes 2 LED Cupholder and all other topside controls are lit) <p>3)Tranquillity Package Includes:</p> <ul style="list-style-type: none"> • Deluxe LED & GDN Fx Lighting (includes 3 additional 20 LED Small Lights and Exterior Cabinet Lights shining on the step entry) • Two Premium Hydro Fall Pillows (includes the waterfalls and an on/off controller Waterfalls are lit) <p>4)Hydrotherapy Package Includes:</p> <ul style="list-style-type: none"> • Hydro Flex Air Therapy System-Heated (includes round keypad controller, variable Speed box and air blower) • Dream Scents on Demand (includes liquid canister and injection air jet) <p>5)Hydrotherapy Package Includes:</p> <ul style="list-style-type: none"> • Hydro Flex Air Therapy -Heated <p>6)Covers:</p> <ul style="list-style-type: none"> • Custom Hydro wise Insulating Cover Colour • Opposite Fold Hardcovers • Cover Remover Standard • Cover Remover LP(Under) • Cover Remover Plus (Hydraulic) <p>7)Lighting:</p> <ul style="list-style-type: none"> • Deluxe LED & GDN Fx Lighting (Hydro Fall pillows Lit if ordered) <p>8)Water Management:</p> <ul style="list-style-type: none"> • EZ- Pure Ozone System (Must delete Pure water) <p>9)Steps:</p> <ul style="list-style-type: none"> • Two Tier Universal Step <p>10)Other Popular Upgrades & Options:</p> <ul style="list-style-type: none"> • GFCI • I Command System





Massage Selector/Air Control Diagram

Massage Selector 1: Turn **LEFT** to seat A, B, C **RIGHT** to seat D, E, F, step and **MIDDLE** to all seats

ACP 1(LEFT): Opens/Closes; Air inlet to all jets in all seats in the **LEFT** A, B, C,

CHC: Cascading Hydro falls Control

ACP 1(RIGHT): Opens/Closes; Air inlet to all jets in all seats in the **RIGHT** D, E, F

HPC: To turn on Pillow Hydro falls

AT: Hydro flex Air Therapy



(6015050) (6015054) (6015059) (6020069) (6020070)



(6020071) (6030064) (6030065) (6030066) (6030067) (6035061)

ACP1- Air controller Pump 1
HPC- Hydro fall Pillow Controller
CHC- Cascading Hydro falls Control

Seat Depth

A = 26.00" (66.04cm)

D = 24.25" (61.60cm)

B = 25.25" (64.14cm)

E = 25.00" (63.50cm)

C = 28.25" (71.76cm)

F = 25.25" (64.14cm)

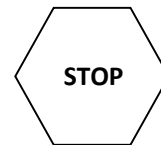
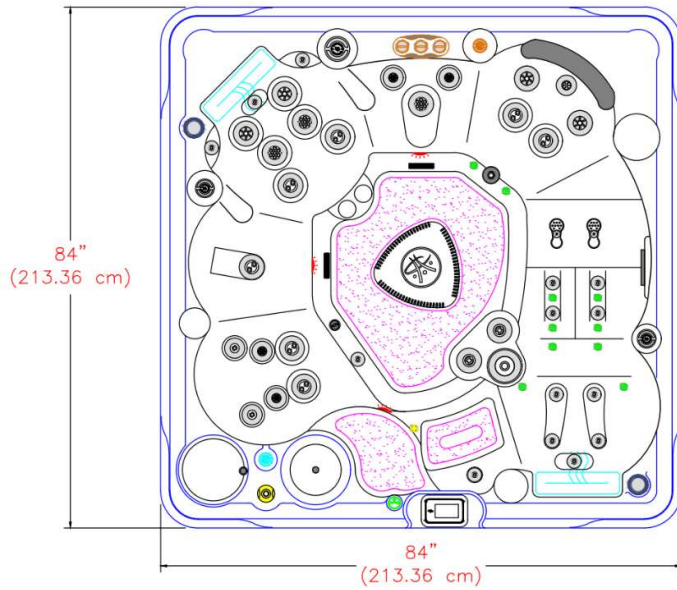


LISTED DIMENSIONS REPRESENT DISTANCE FROM THE TOP OF ACRYLIC TO LOWEST POINT IN THE SEAT. TOLERANCE ±1/16" (0.158CM)

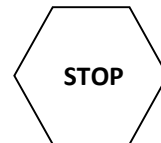
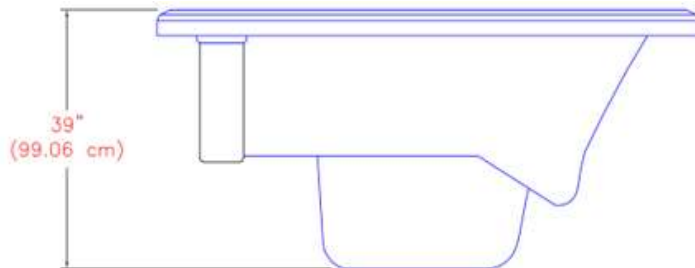




Dimensions



IMPORTANT! Always measure each hot tub for exact dimensions BEFORE designing its foundational support and/or decking



NOTE:

Dimensional tolerances are as follows due to variations in manufacturing:

Length / Width / Height(s): +/- 3/8"

Height Variance (side to side): +/- 1/4"



2023 SIGNATURE SELF CLEAN 695 GOLD



Year:	2023
Model:	Self-Clean 695 Gold
Size:	84"X 84" X 39" / (213 cm X 213 cm X 99 cm)
Series:	Self-Cleaning Gold Series
Main Keypad:	IN. K1000 Keypad (7005088)
Spa Pack and Heater:	Heater: 4 KW 240 V (NA) & 3 KW 230V (EU) Controller GECKO IN.YE-3-V3 NA / EU
Pump #1:	North America (60 Hz): 2- SP, 4 HP, AMPs – 12.0/1.0 (6505155) Europe (50 Hz): 2- SP, 3 HP, AMPs – 10.0/3.0 (6510041)
Pump #2:	N/A
Circulation Pump:	North America (60 Hz): 1- Speed, 1/12 HP, AMPs 0.8 (6505160) Europe (50 Hz): 1- Speed, 0.250 KW- HP, AMPs 1 (6510046)
39 Total Jets:	9- CLUSTERSTORM JET- DIRECTIONAL (6015050) , 2- CLUSTERSTORM JET- SHOULDER JET (6015054) , 4- UNIBODY OZONE CLUSTER JET (6015059) , 2- MINISTORM JET – DIRECTIONAL (6020069) , 4- MINISTORM JET- MULTI-MASSAGE (6020070) , 1- MINISTORM JET- GALAXY (6020071) , 4- POLYSTORM JET – RIFLED (6030064) , 3- POLYSTORM JET – PULSE MASSAGE (6030065) , 7- POLYSTORM JET – TWIN ROTO (6030066) , 2- POLYSTORM JET- DIRECTIONAL (6030067) , 1- POWERSTORM JET – DIRECTIONAL (6035061)
Air Controls:	(3)- Air Control (4525089)
Diverter:	(3)-2" Water Diverter (4525086)
Filters:	Self-Clean 75 SQ FT Filter (4520008)





Specification

Seating Capacity	5-6 Person
Dimensions	84"X 84" X 39" / (213 cm X 213 cm X 99 cm)
Dry Weight	812 lbs / 368 kg
Filled Weight (Spa Volume)	3,820 lbs / 1,733 kg
Water Capacity (Spa Volume)	359 US gallons / 1,365 L
Electronic Controls	GECKO-IN. K1000 Spa Keypad
Pump 1	North America (60 Hz): 2- Speed, 3 HP, AMPS 10.0/3.5 Europe (50 Hz): 2- Speed, 2.5 HP, AMPS 8.6/2.8
Pump 2	North America (60 Hz): 1- Speed, 4 HP, AMPS 12.0/1.0 Europe (50 Hz): 1- Speed, 4 HP, AMPS 14
Circulation Pump	North America (60 Hz):1- Speed, 1/12 HP, AMPS 0.8 Europe (50 Hz): 1- Speed, 0.250 KW- HP, AMPS 1
Total Jets	52
Seat A Jets	(2)-6020069; (2)-6020070; (2)-6035064
Seat B Jets	(1)-6030066
Seat C Jets	(2)-6015050; (2)-6015054; (2)-6035062; (2)-6035063; (2)-6035064
Seat D Jets	(2)-6020070; (1)-6030065; (1)-6015053
Seat E Jets	(1)-6020071; (2)-6030064; (2)-6015050; (2)-6035064
Seat F Jets	(15)-6015050; (4)- 6015059; (1)- 6035061
Footwell	(2)-6035061; (2)-6015051
Massage Selectors	YES
Air Controls	3
Water Management System	Pure Water System
LED Lighting	(1) Self Clean Plate with 20 LED lights
Synthetic Cabinet Colours	Midnight Everlast, Driftwood Design.
Acrylic Colours	Alpine Mist, Midnight Canyon, Silver Marble, Tuscan Sun, Pure White, Black Opal.
Headrests	(2)- 8" Pillow Assembly; (1)-Small wrap Pillow
Electrical Requirements	North America (60 Hz): 240 V,40 AMP GFCI RATED: 50 AMPS Europe (50 Hz):230V, 16A or suitably rated circuit breaker to comply with local electrical codes. RCD breakers with MC.
Warranty	10/5/3 Year limited
Options/ Special Features	<p>1) Northern Falls Package Include:</p> <ul style="list-style-type: none"> • Cascading Hydro fall (includes 3 laminar waterfalls and on/off controller) • Northern Lights (includes 2 LED Cupholders and all other topside controls are lit) <p>2)Chromotherapy Package Include:</p> <ul style="list-style-type: none"> • Deluxe LED & GDN Fx Lighting (includes 3 additional 20 LED Small Lights and Exterior Cabinet Lights shining on the step entry) • Northern Lights (includes 2 LED Cupholder and all other topside controls are lit) <p>3)Tranquillity Package Includes:</p> <ul style="list-style-type: none"> • Deluxe LED & GDN Fx Lighting (includes 3 additional 20 LED Small Lights and Exterior Cabinet Lights shining on the step entry) • Two Premium Hydro Fall Pillows (includes the waterfalls and an on/off controller Waterfalls are lit) <p>4)Hydrotherapy Package Includes:</p> <ul style="list-style-type: none"> • Hydro Flex Air Therapy System-Heated (includes round keypad controller, variable Speed box and air blower) • HydroTher Zone Lighting • Dream Scents on Demand (includes liquid canister and injection air jet) <p>5)Hydrotherapy Package Includes:</p> <ul style="list-style-type: none"> • Hydro Flex Air Therapy-Heated <p>6)Covers:</p> <ul style="list-style-type: none"> • Custom Hydro wise Insulating Cover Colour • Opposite Fold Hardcovers • Cover Remover Standard • Cover Remover LP(Under) • Cover Remover Plus <p>7)Lighting:</p> <ul style="list-style-type: none"> • Deluxe LED & GDN Fx Lighting (Hydro Fall pillows Lit if ordered) <p>8)Water Management:</p> <ul style="list-style-type: none"> • EZ- Pure Ozone System (Must delete Pure water) <p>9)Steps:</p> <ul style="list-style-type: none"> • Two Tier Universal Step <p>10)Other Popular Upgrades & Options:</p> <ul style="list-style-type: none"> • GFCI • I Command System





Massage Selector/Air Control Diagram



ACP1- Air controller Pump 1
 HPC- Hydro fall Pillow Controller
 CHC- Cascading Hydro falls Control

Seat Depth

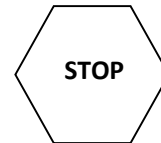
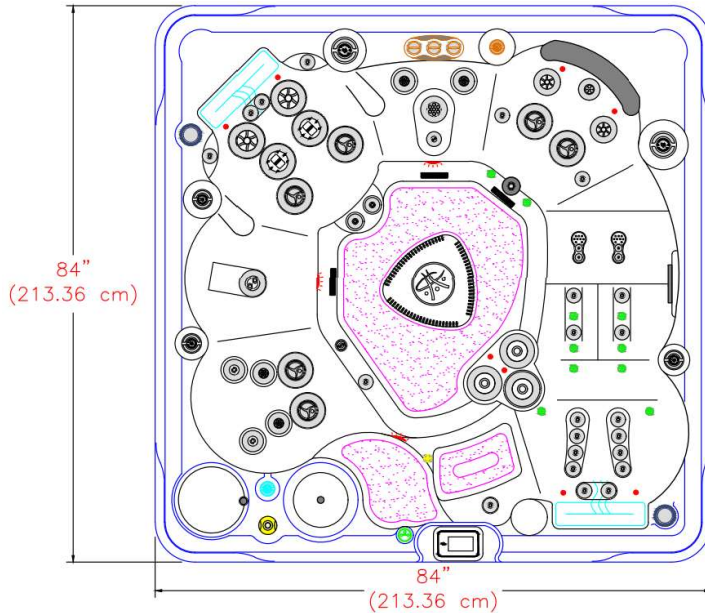
- A = 26.00" (66.04cm)
- B = 25.25" (64.14cm)
- C = 28.25" (71.76cm)
- D = 24.25" (61.60cm)
- E = 25.00" (63.50cm)
- F = 25.25" (64.14cm)



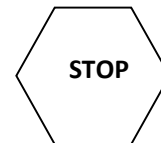
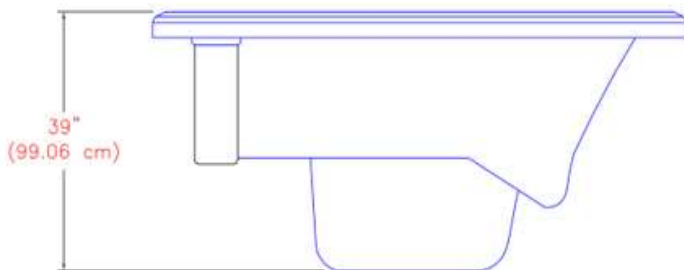
LISTED DIMENSIONS REPRESENT DISTANCE FROM THE TOP OF ACRYLIC TO LOWEST POINT IN THE SEAT. TOLERANCE ±1/16" (0.158CM)



Dimensions



IMPORTANT! Always measure each hot tub for exact dimensions BEFORE designing its foundational support and/or decking



NOTE:

Dimensional tolerances are as follows due to variations in manufacturing:

Length / Width / Height(s): +/- 3/8"

Height Variance (side to side): +/- 1/4"



2023 SIGNATURE SELF CLEAN 695 PLATINUM




Year:	2023
Model:	Self-Clean 695 Platinum
Size:	84"X 84" X 39" / (213 cm X 213 cm X 99 cm)
Series:	Self-Cleaning Platinum Series
Main Keypad:	IN. K1000 Keypad (7005088)
Spa Pack and Heater:	Heater: 4 KW 240 V (NA) & 3 KW 230V (EU) Controller GECKO IN.YE-6 NA / IN.YE-5 EU
Pump #1:	North America (60 Hz): 2- SP, 4 HP, AMPs – 12.0/1.0 (6505159) Europe (50 Hz): 2- SP, 3 HP, AMPs – 10.0/3.0 (6510038)
Pump #2:	North America (60 Hz): 1- Speed, 4 HP, AMPs 12.0/1.0 (6505155) Europe (50 Hz): 1- Speed, 4 HP, AMPs 14 (6510040)
Circulation Pump:	North America (60 Hz): 1- Speed, 1/12 HP, AMPs 0.8 (6505160) Europe (50 Hz): 1- Speed, 0.250 KW- HP, AMPs 1 (6510046)
52 Total Jets:	19- CLUSTERSTORM JET- DIRECTIONAL (6015050) , 2- CLUSTERSTORM JET- RIFLED (6015051) , 1- CLUSTERSTORM JET- TWIN ROTO (6015053) , 2- CLUSTERSTORM JET- SHOULDER JET (6015054) , 4- UNIBODY OZONE CLUSTER JET (6015059) , 2- MINISTORM JET – DIRECTIONAL (6020069) , 4- MINISTORM JET- MULTI-MASSAGE (6020070) , 1- MINISTORM JET- GALAXY (6020071) , 2- POLYSTORM JET – RIFLED (6030064) , 1- POLYSTORM JET – PULSE MASSAGE (6030065) , 1- POLYSTORM JET – TWIN ROTO (6030066) , 3- POWERSTORM JET – DIRECTIONAL (6035061) , 2- POWERSTORM JET – RIFLED (6035062) , 2- POWERSTORM JET – RESONATOR (6035063) , 6- POWERSTORM JET – TWISTER (6035064)
Air Controls:	(3)- Air Control (4525089)
Diverter:	(2)- 2" Water Diverter (4525086)
Filters:	Self-Clean 75 SQ FT Filter (4520008)





Specification

Seating Capacity	6-7 Person	
Dimensions	90"X 90" X 39" / (228 cm X 228 cm X 99 cm)	
Dry Weight	852 lbs / 387 kg	
Filled Weight (Spa Volume)	4,192 lbs / 1,902 kg	
Water Capacity (Spa Volume)	399 US gallons / 1,515 L	
Electronic Controls	GECKO-IN. K1000 Spa Keypad	
Pump 1	North America (60 Hz): 2- Speed, 3 HP, AMPS 10.0/3.5 Europe (50 Hz): 2- Speed, 2.5 HP, AMPS 8.6/2.8	
Pump 2	North America (60 Hz): 1- Speed, 4 HP, AMPS 12.0/1.0 Europe (50 Hz): 1- Speed, 4 HP, AMPS 14	
Circulation Pump	North America (60 Hz):1- Speed, 1/12 HP, AMPS 0.8 Europe (50 Hz): 1- Speed, 0.250 KW- HP, AMPS 1	
Total Jets	53	
Seat A Jets	(1)-6020071; (2)-6030064; (2)- 6035064	
Seat B Jets	(10)-6015050; (2)-6015059	
Seat C Jets	(1)-6020069; (1)-6020072	
Seat D Jets	(2)-6015050; (2)-6015053; (2)-6035062; (2)-6035063; (2)-6035064	
Seat E Jets	(2)-6020070; (1)-6030065; (1)-6015053	
Seat F Jets	(2)-6015050; (2)-6015053; (2)-6030064; (2)-6030065; (2)-6035064	
Seat G Jets	(1)-6015050	
Footwell	(4)-6015057; (4)-6015057	
Massage Selectors	YES	
Air Controls	3	
Water Management System	Pure Water System	
LED Lighting	(1) Self Clean Plate with 20 LED lights	
Synthetic Cabinet Colours	Midnight Everlast, Driftwood Design.	
Acrylic Colours	Alpine Mist, Midnight Canyon, Silver Marble, Tuscan Sun, Pure White, Black Opal.	
Headrests	(2)- 8" Pillow Assembly; (2)-Tubular Pillow	
Electrical Requirements	North America (60 Hz): 240 V,40 AMP GFCI RATED: 50 AMPS Europe (50 Hz):230V, 16A or suitably rated circuit breaker to comply with local electrical codes. RCD breakers with MC.	
Warranty	10/5/3 Year limited	
Options/ Special Features	1) Northern Falls Package Include: <ul style="list-style-type: none"> • Cascading Hydro fall (includes 3 laminar waterfalls and on/off controller) • Northern Lights (includes 2 LED Cupholders and all other topside controls are lit) 2)Chromotherapy Package Include: <ul style="list-style-type: none"> • Deluxe LED & GDN Fx Lighting (includes 3 additional 20 LED Small Lights and Exterior Cabinet Lights shining on the step entry) • Northern Lights (includes 2 LED Cupholder and all other topside controls are lit) 3)Tranquillity Package Includes: <ul style="list-style-type: none"> • Deluxe LED & GDN Fx Lighting (includes 3 additional 20 LED Small Lights and Exterior Cabinet Lights shining on the step entry) • Two Premium Hydro Fall Pillows (includes the waterfalls and an on/off controller Waterfalls are lit) 4)Hydrotherapy Package Includes: <ul style="list-style-type: none"> • Hydro Flex Air Therapy System-Heated (includes round keypad controller, variable Speed box and air blower) • HydroTher Zone Lighting • Dream Scents on Demand (includes liquid canister and injection air jet) 5) Hydrotherapy: <ul style="list-style-type: none"> • Hydro Flex Air Therapy-Heated 6)Covers: <ul style="list-style-type: none"> • Custom Hydro wise Insulating Cover Colour • Opposite Fold Hardcovers • Cover Remover Standard • Cover Remover LP(Under) • Cover Remover Plus (Hydraulic) 7)Lighting: <ul style="list-style-type: none"> • Deluxe LED & GDN Fx Lighting (Hydro Fall pillows Lit if ordered) 8)Water Management: <ul style="list-style-type: none"> • EZ- Pure Ozone System (Must delete Pure Water) 9)Steps: <ul style="list-style-type: none"> • Two Tier Universal Step 10)Other Popular Upgrades & Options: <ul style="list-style-type: none"> • GFCI, • I Command System 	



Massage Selector/Air Control Diagram

ACP 2(RIGHT): Opens/Closes;
Air inlet to all jets in the seat D

Pump Diverter 1: Turn
LEFT to seat E **RIGHT** to
seat A, F, Step and **MIDDLE**
to all seats

Pump Diverter 2: Turn
LEFT to seat B, C **RIGHT** to
seat D and **MIDDLE** to all
seats

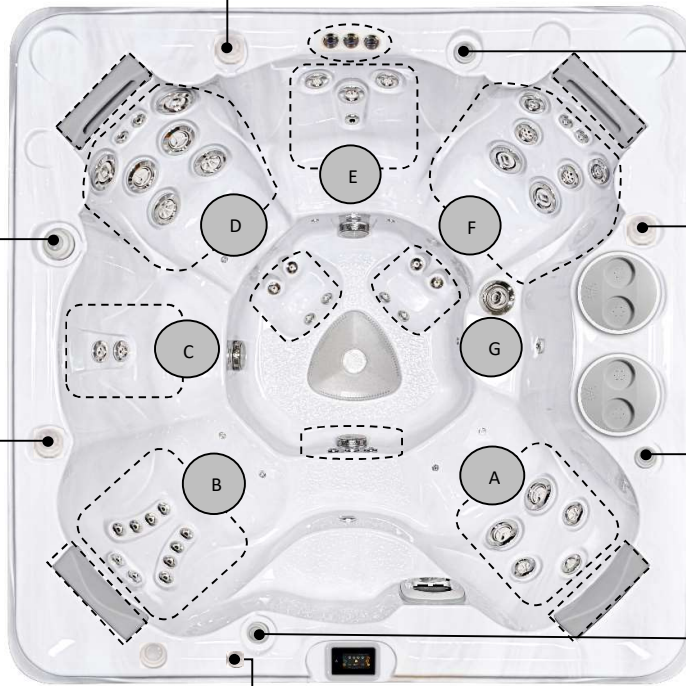
ACP 2(RIGHT):
Opens/Closes; Air inlet to all
jets in all seats in the **RIGHT**
F

ACP 1 (LEFT):
Opens/Closes; Air inlet to all
jets in the seats B, C

HPC: To turn
ON/OFF Pillow
Hydro falls

CHC: To turn **ON/OFF**
Hydro falls

AT: Hydro flex Air Therapy



- (6015050)
 - (6015053)
 - (6015054)
 - (6015059)
 - (6020069)
 - (6020070)
 - (6020071)
- (6020072)
 - (6030064)
 - (6030065)
 - (6035061)
 - (6035062)
 - (6035063)
 - (6035064)
 - (6015057)

ACP1- Air controller Pump 1
HPC- Hydro fall Pillow Controller
CHC- Cascading Hydro falls Control

Seat Depth

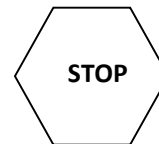
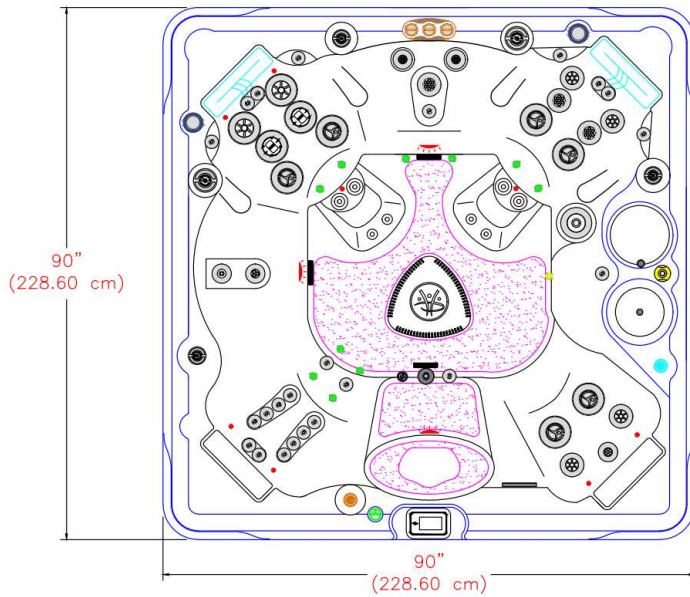
- A = 27.625" (70.17cm)
- B = 25.00" (63.50cm)
- C = 28.50" (72.39cm)
- D = 25.00" (63.50cm)
- E = 26.875" (68.26cm)
- F = 21.75" (55.26cm)
- G = 27.25" (69.22cm)



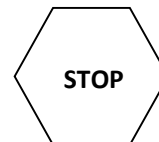
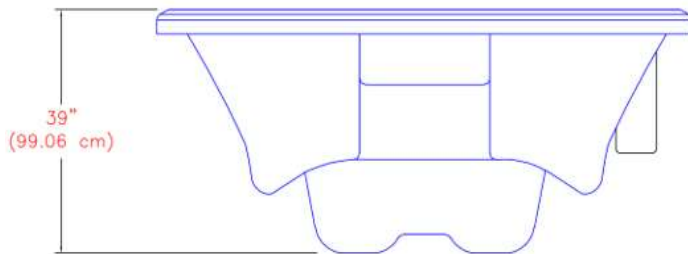
LISTED DIMENSIONS REPRESENT DISTANCE FROM THE TOP OF ACRYLIC TO LOWEST POINT IN THE SEAT. TOLERANCE ±1/16" (0.158CM)



Dimensions



IMPORTANT! Always measure each hot tub for exact dimensions BEFORE designing its foundational support and/or decking



NOTE:

Dimensional tolerances are as follows due to variations in manufacturing:

Length / Width / Height(s): +/- 3/8"

Height Variance (side to side): +/- 1/4"





2023 SIGNATURE SELF CLEAN 720 PLATINUM



Year:	2023
Model:	Self-Clean 720 Platinum
Size:	90"X 90" X 39" / (228 cm X 228 cm X 99 cm)
Series:	Self-Cleaning Platinum Series
Main Keypad:	IN. K1000 Keypad (7005088)
Spa Pack and Heater:	Heater: 4 KW 240 V (NA) & 3 KW 230V (EU) Controller GECKO IN.YE-6 NA / IN.YE-5 EU
Pump #1:	North America (60 Hz): 2- SP, 4 HP, AMPs – 12.0/1.0 (6505159) Europe (50 Hz): 2- SP, 3 HP, AMPs – 10.0/3.0 (6510038)
Pump #2:	North America (60 Hz): 1- Speed, 4 HP, AMPs 12.0/1.0 (6505155) Europe (50 Hz): 1- Speed, 4 HP, AMPs 14 (6510040)
Circulation Pump:	North America (60 Hz): 1- Speed, 1/12 HP, AMPs 0.8 (6505160) Europe (50 Hz): 1- Speed, 0.250 KW- HP, AMPs 1 (6510046)
53 Total Jets:	15- CLUSTERSTORM JET- DIRECTIONAL (6015050) , 1- CLUSTERSTORM JET- TWIN ROTO (6015053) , 4- CLUSTERSTORM JET- SHOULDER JET (6015054) , 2- UNIBODY OZONE CLUSTER JET (6015059) , 1- MINISTORM JET – DIRECTIONAL (6020069) , 2- MINISTORM JET- MULTI-MASSAGE (6020070) , 1- MINISTORM JET- GALAXY (6020071) , 1- MINISTORM JET- PULSE MASSAGE (6020072) , 4- POLYSTORM JET – RIFLED (6030064) , 3- POLYSTORM JET – PULSE MASSAGE (6030065) , 3- POWERSTORM JET – DIRECTIONAL (6035061) , 2- POWERSTORM JET – RIFLED (6035062) , 2- POWERSTORM JET – RESONATOR (6035063) , 6- POWERSTORM JET – TWISTER (6035064) , 8- CMP EURO JET- FOOT (6015057)
Air Controls:	(3)-Air Control (4525089)
Diverter:	(2)-2" Water Diverter (4525086)
Filters:	Self-Clean 75 SQ FT Filter (4520008)





Specification

Seating Capacity	6-7 Person
Dimensions	90"X 90" X 39" / (228 cm X 228 cm X 99 cm)
Dry Weight	884 lbs / 401 kg
Filled Weight (Spa Volume)	4,428 lbs / 2,009 kg
Water Capacity (Spa Volume)	423 US gallons / 1,608 L
Electronic Controls	GECKO-IN. K1000 Spa Keypad
Pump 1	North America (60 Hz): 2- Speed, 3 HP, AMPS 10.0/3.5 Europe (50 Hz): 2- Speed, 2.5 HP, AMPS 8.6/2.8
Pump 2	North America (60 Hz): 1- Speed, 4 HP, AMPS 12.0/1.0 Europe (50 Hz): 1- Speed, 4 HP, AMPS 14
Circulation Pump	North America (60 Hz):1- Speed, 1/12 HP, AMPS 0.8 Europe (50 Hz): 1- Speed, 0.250 KW- HP, AMPS 1
Total Jets	58
Seat A Jets	(14)-6015050; (6)-6015059; (1)-6035061
Seat B Jets	(1)-6020071; (2)-6030064; (2)- 6035064
Seat C Jets	(2)-6015050; (2)-6015054; (2)-6015053; (2)-6020072
Seat D Jets	(2)-6020070; (1)-6015053; (1)-6030065
Seat E Jets	(2)-6015050; (2)-6015054; (2)-6015062; (2)-6015063; (2)-6015064
Seat F Jets	(1)-6030066
Seat G Jets	(1)-6030066
Footwell	(4)-6015057; (4)-6015057
Massage Selectors	YES
Air Controls	3
Water Management System	Pure Water System
LED Lighting	(1) Self Clean Plate with 20 LED lights
Synthetic Cabinet Colours	Midnight Everlast, Driftwood Design
Acrylic Colours	Alpine Mist, Midnight Canyon, Silver Marble, Tuscan Sun, Pure White, Black Opal.
Headrests	(2)- 8" Pillow Assembly; (1)-Tubular Pillow
Electrical Requirements	North America (60 Hz): 240 V,40 AMP GFCI RATED: 50 AMPS Europe (50 Hz):230V, 16A or suitably rated circuit breaker to comply with local electrical codes. RCD breakers with MC.
Warranty	10/5/3 Year limited
Options/ Special Features	<p>1) Northern Falls Package Include:</p> <ul style="list-style-type: none"> • Cascading Hydro fall (includes 3 laminar waterfalls and on/off controller) • Northern Lights (includes 2 LED Cupholders and all other topside controls are lit) <p>2)Chromotherapy Package Include:</p> <ul style="list-style-type: none"> • Deluxe LED & GDN Fx Lighting (includes 3 additional 20 LED Small Lights and Exterior Cabinet Lights shining on the step entry) • Northern Lights (includes 2 LED Cupholder and all other topside controls are lit) <p>3)Tranquillity Package Includes:</p> <ul style="list-style-type: none"> • Deluxe LED & GDN Fx Lighting (includes 3 additional 20 LED Small Lights and Exterior Cabinet Lights shining on the step entry) • Two Premium Hydro Fall Pillows (includes the waterfalls and an on/off controller Waterfalls are lit) <p>4)Hydrotherapy Package Includes:</p> <ul style="list-style-type: none"> • Hydro Flex Air Therapy System-Heated (includes round keypad controller, variable Speed box and air blower) • HydroTher Zone Lighting • Dream Scents on Demand (includes liquid canister and injection air jet) <p>5)Hydrotherapy:</p> <ul style="list-style-type: none"> • Hydro Flex Air Therapy-Heated <p>6)Covers:</p> <ul style="list-style-type: none"> • Custom Hydro wise Insulating Cover Colour • Opposite Fold Hardcovers • Cover Remover Standard • Cover Remover LP(Under) • Cover Remover Plus (Hydraulic) <p>7)Lighting:</p> <ul style="list-style-type: none"> • Deluxe LED & GDN Fx Lighting (Hydro Fall pillows Lit if ordered) <p>8)Water Management:</p> <ul style="list-style-type: none"> • EZ- Pure Ozone System (Must delete Pure water) <p>9)Steps:</p> <ul style="list-style-type: none"> • Two Tier Universal Step <p>10)Other Popular Upgrades & Options:</p> <ul style="list-style-type: none"> • GFCI • I Command System





Massage Selector/Air Control Diagram

ACP 1: Opens/Closes; Air inlet to all jets in the seat C

Pump Diverter 1: Turn **LEFT** to seat B, D **RIGHT** to seat C and **MIDDLE** to all seats

Pump Diverter 2: Turn **LEFT** to seat E, F, G **RIGHT** to seat A and **MIDDLE** to all seats

ACP 2(LEFT): Opens/Closes; Air inlet to all jets in the seat D, E, F.

HPC: To turn ON/OFF Pillow Hydro falls

ACP 2(RIGHT): Opens/Closes; Air inlet to all jets in seat A

CHC: To turn ON/OFF Hydro falls

AT: Hydro flex Air Therapy



ACP1- Air controller Pump 1
 HPC- Hydro fall Pillow Controller
 CHC- Cascading Hydro falls Control

Seat Depth

A = 27.625" (70.17cm)

D = 25.00" (63.50cm)

G = 27.25" (69.22cm)

B = 25.00" (63.50cm)

E = 26.875" (68.26cm)

C = 28.50" (72.39cm)

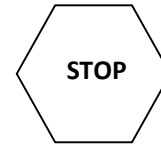
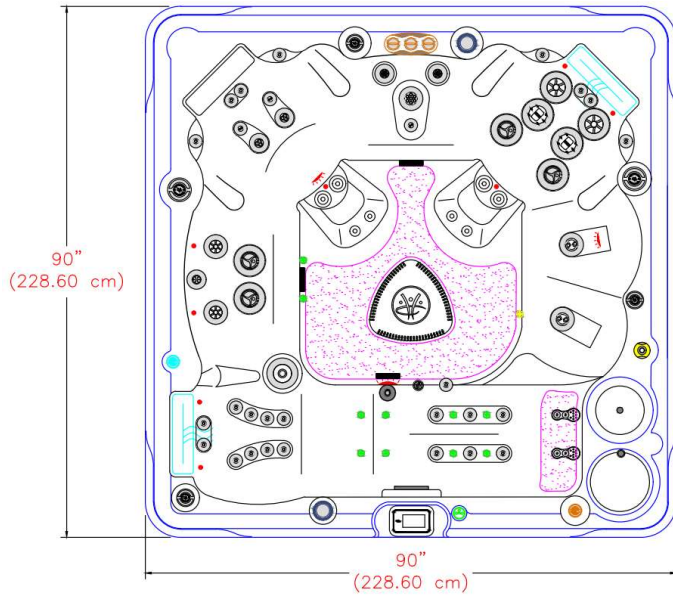
F = 21.75" (55.26cm)



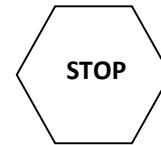
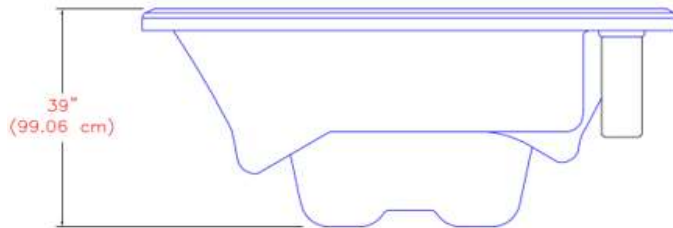
LISTED DIMENSIONS REPRESENT DISTANCE FROM THE TOP OF ACRYLIC TO LOWEST POINT IN THE SEAT. TOLERANCE ±1/16" (0.158CM)



Dimensions



IMPORTANT! Always measure each hot tub for exact dimensions BEFORE designing its foundational support and/or decking



NOTE:

Dimensional tolerances are as follows due to variations in manufacturing:

Length / Width / Height(s): +/- 3/8"

Height Variance (side to side): +/- 1/4"





2023 SIGNATURE SELF CLEAN 770 PLATINUM



Year:	2023
Model:	Self-Clean 770 Platinum
Size:	90"X 90" X 39" / (228 cm X 228 cm X 99 cm)
Series:	Self-Cleaning Platinum Series
Main Keypad:	IN. K1000 Keypad (7005088)
Spa Pack and Heater:	Heater: 4 KW 240 V (NA) & 3 KW 230V (EU) Controller GECKO IN.YE-6 NA / IN.YE-5 EU
Pump #1:	North America (60 Hz): 2- SP, 4 HP, AMPs – 12.0/1.0 (6505159) Europe (50 Hz): 2- SP, 3 HP, AMPs – 10.0/3.0 (6510038)
Pump #2:	North America (60 Hz): 1- Speed, 4 HP, AMPs 12.0/1.0 (6505155) Europe (50 Hz): 1- Speed, 4 HP, AMPs 14 (6510040)
Circulation Pump:	North America (60 Hz): 1- Speed, 1/12 HP, AMPs 0.8 (6505160) Europe (50 Hz): 1- Speed, 0.250 KW- HP, AMPs 1 (6510046)
58 Total Jets:	18- CLUSTERSTORM JET- DIRECTIONAL (6015050) , 3- CLUSTERSTORM JET- TWIN ROTO (6015053) , 4- CLUSTERSTORM JET- SHOULDER JET (6015054) , 6- UNIBODY OZONE CLUSTER JET (6015059) , 2- MINISTORM JET- MULTI-MASSAGE (6020070) , 1- MINISTORM JET- GALAXY (6020071) , 2- MINISTORM JET- PULSE MASSAGE (6020072) , 2- POLYSTORM JET – RIFLED (6030064) , 1- POLYSTORM JET – PULSE MASSAGE (6030065) , 2- POLYSTORM JET – TWIN ROTO (6030066) , 1- POWERSTORM JET – DIRECTIONAL (6035061) , 2- POWERSTORM JET – RIFLED (6035062) , 2- POWERSTORM JET – RESONATOR (6035063) , 4- POWERSTORM JET – TWISTER (6035064) , 8- CMP EURO JET – FOOT (6015057)
Air Controls:	(3)- Air Control (4525089)
Diverter:	(2)- 2" Water Diverter (4525086)
Filters:	Self-Clean 75 SQ FT Filter (4520008)





Specification

Seating Capacity	6-8 Person
Dimensions	94" X 94" X 39" / (239 cm X 239 cm X 99 cm)
Dry Weight	967 lbs / 439 kg
Filled Weight (Spa Volume)	4,241 lbs / 1,924 kg
Water Capacity (Spa Volume)	391 US gallons / 1,485 L
Electronic Controls	GECKO-IN. K1000 Spa Keypad
Pump 1	North America (60 Hz): 2- Speed, 3 HP, AMPs 10.0/3.5 Europe (50 Hz): 2- Speed, 2.5 HP, AMPs 8.6/2.8
Pump 2	North America (60 Hz): 1- Speed, 4 HP, AMPs 12.0/1.0 Europe (50 Hz): 1- Speed, 4 HP, AMPs 14
Circulation Pump	North America (60 Hz):1- Speed, 1/12 HP, AMPs 0.8 Europe (50 Hz): 1- Speed, 0.250 KW- HP, AMPs 1
Total Jets	63
Seat A Jets	(2)-6015050; (2)-6015054; (2)-6035062; (2)- 6035063; (2)- 6035064; (1)-6035061
Seat B Jets	(1)-6020070; (1)-6020071; (2)-6030065
Seat C Jets	(2)-6015050; (2)-6015054; (2)-6030064; (2)-6030065; (2)-6035064
Seat D Jets	(1)-6035065
Seat E Jets	(1)-6020071; (2)-6030064; (2)-6035064; (4)-6015059; (4)-6015050
Seat F&G Jets	(10)-6015050; (6)-6015059; (2)-6020070; (1)-6030065; (1)-6015053
Footwell	(4)-6015057
Massage Selectors	YES
Air Controls	2
Water Management System	Pure Water System
LED Lighting	(1)- Self Clean Plate with 20 LED lights
Synthetic Cabinet Colours	Midnight Everlast, Driftwood Design
Acrylic Colours	Alpine Mist, Midnight Canyon, Silver Marble, Tuscan Sun, Pure White, Black Opal.
Headrests	(2)- 8" Pillow Assembly; (3)-Tubular Pillows
Electrical Requirements	North America (60 Hz): 240 V,40 AMP GFCI RATED: 50 AMPs Europe (50 Hz):230V, 16A or suitably rated circuit breaker to comply with local electrical codes. RCD breakers with MC
Warranty	10/5/3 Year limited
Options/ Special Features	<p>1) Northern Falls Package Include:</p> <ul style="list-style-type: none"> • Cascading Hydro fall (includes 3 laminar waterfalls and on/off controller) • Northern Lights (includes 2 LED Cupholders and all other topside controls are lit) <p>2)Chromotherapy Package Include:</p> <ul style="list-style-type: none"> • Deluxe LED & GDN Fx Lighting (includes 2 additional 20 LED Small Lights and Exterior Cabinet Lights shining on the step entry) • Northern Lights (includes 2 LED Cupholder and all other topside controls are lit) <p>3)Tranquillity Package Includes:</p> <ul style="list-style-type: none"> • Deluxe LED & GDN Fx Lighting (includes 2 additional 20 LED Small Lights and Exterior Cabinet Lights shining in the entry step) • Two premium Hydrofall Pillows (including the waterfalls and an on/off controller Waterfalls are lit) <p>4)Hydrotherapy Package Includes:</p> <ul style="list-style-type: none"> • Hydro Flex Air Therapy System-Heated (includes round keypad controller, variable Speed box and air blower) • HydroTher Zone Lighting • Dream Scents on Demand (includes liquid canister and injection air jet) <p>5)Hydrotherapy:</p> <ul style="list-style-type: none"> • Hydro Flex Air Therapy-Heated <p>6)Covers:</p> <ul style="list-style-type: none"> • Custom Hydro wise Insulating Cover Colour • Opposite Fold Hardcovers • Cover Remover Standard • Cover Remover LP(Under) • Cover Remover Plus (Hydraulic) <p>7)Lighting:</p> <ul style="list-style-type: none"> • Deluxe LED & GDN Fx Lighting (Hydro Fall pillows Lit if ordered) <p>8)Water Management:</p> <ul style="list-style-type: none"> • EZ- Pure Ozone System (Must delete Pure water) <p>9)Steps:</p> <ul style="list-style-type: none"> • Two Tier Universal Step <p>10)Other Popular Upgrades & Options:</p> <ul style="list-style-type: none"> • GFCI • I Command System



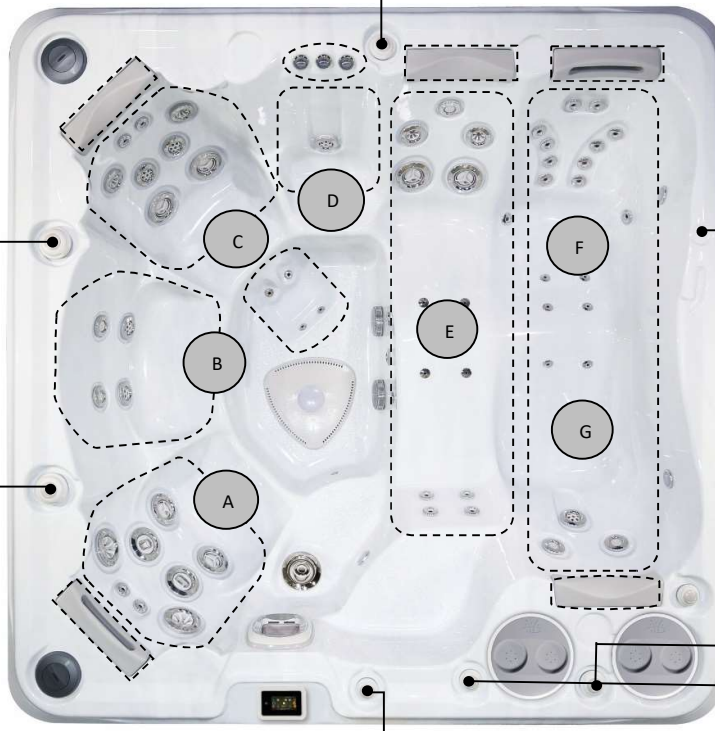


Massage Selector/Air Control Diagram

ACP 2: Opens/Closes; Air inlet to all jets in seat C, F.

Pump Diverter 2: Turn LEFT to seat C RIGHT to seat F and MIDDLE to all seats

Pump Diverter 1: Turn LEFT to seat B, D, E, RIGHT to seat A and MIDDLE to all seats



AT: Hydro flex Air Therapy

HPC: To turn ON/OFF Pillow Hydro falls

CHC: To turn ON/OFF Hydro falls

ACP 1: Opens/Closes; Air inlet to all jets in seats A, B, D, E.



ACP1- Air controller Pump 1
HPC- Hydro fall Pillow Controller
CHC- Cascading Hydro falls Control

Seat Depth

A = 28.00" (71.12cm)

D = 25.00" (63.50cm)

G = 24.625" (62.55cm)

B = 24.375" (61.91cm)

E = 26.375" (66.99cm)

C = 29.00" (73.66cm)

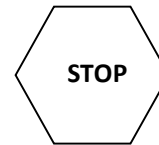
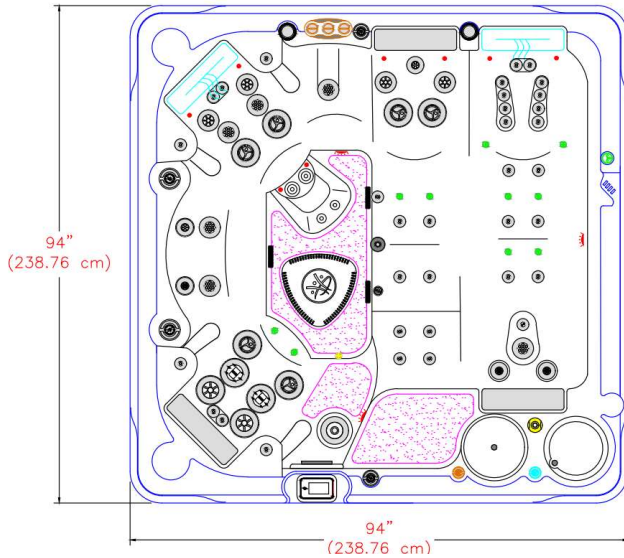
F = 26.375" (66.99cm)



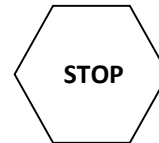
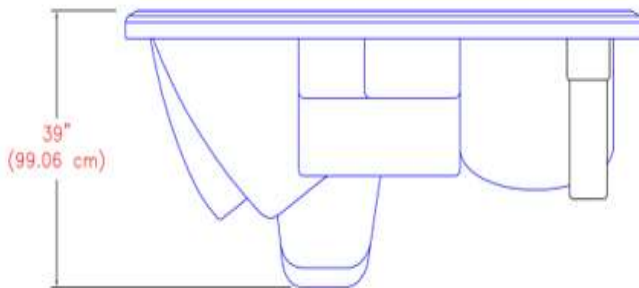
LISTED DIMENSIONS REPRESENT DISTANCE FROM THE TOP OF ACRYLIC TO LOWEST POINT IN THE SEAT. TOLERANCE ±1/16" (0.158CM)



Dimensions



IMPORTANT! Always measure each hot tub for exact dimensions BEFORE designing its foundational support and/or decking



NOTE:

Dimensional tolerances are as follows due to variations in manufacturing:

Length / Width / Height(s): +/- 3/8"

Height Variance (side to side): +/- 1/4"



2023 SIGNATURE SELF CLEAN 790 PLATINUM



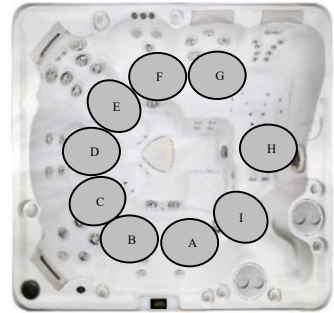
Year:	2023
Model:	Self-Clean 790 Platinum
Size:	94"X 94" X 39" / (239 cm X 239 cm X 99 cm)
Series:	Self-Cleaning Platinum Series
Main Keypad :	IN. K1000 Keypad (7005088)
Spa Pack and Heater:	Heater: 4 KW 240 V (NA) & 3 KW 230V (EU) Controller GECKO IN.YE-6 NA / IN.YE-5 EU
Pump #1:	North America (60 Hz): 2- SP, 4 HP, AMPs – 12.0/1.0 (6505159) Europe (50 Hz): 2- SP, 3 HP, AMPs – 10.0/3.0 (6510038)
Pump #2:	North America (60 Hz): 1- Speed, 4 HP, AMPs 12.0/1.0 (6505155) Europe (50 Hz): 1- Speed, 4 HP, AMPs 14 (6510040)
Circulation Pump:	North America (60 Hz): 1- Speed, 1/12 HP, AMPs 0.8 (6505160) Europe (50 Hz): 1- Speed, 0.250 KW- HP, AMPs 1 (6510046)
63 Total Jets:	18- CLUSTERSTORM JET- DIRECTIONAL (6015050) , 1- CLUSTERSTORM JET- TWIN ROTO (6015053) , 4- CLUSTERSTORM JET- SHOULDER JET (6015054) , 10- UNIBODY OZONE CLUSTER JET (6015059) , 3- MINISTORM JET- MULTI-MASSAGE (6020070) , 2- MINISTORM JET- GALAXY (6020071) , 4- POLYSTORM JET – RIFLED (6030064) , 6- POLYSTORM JET – PULSE MASSAGE (6030065) , 1- POWERSTORM JET – DIRECTIONAL (6035061) , 2- POWERSTORM JET – RIFLED (6035062) , 2- POWERSTORM JET – RESONATOR (6035063) , 6- POWERSTORM JET – TWISTER (6035064) , 4- CMP EURO JET – FOOT (6015057)
Air Controls:	(2)-Air Control (4525089)
Diverter:	(2)-2" Water Diverter (4525086)
Filters:	Self-Clean 75 SQ FT Filter (4520008)





Specification

Seating Capacity	8-10 Person
Dimensions	94"X 110" X 39" / (239 cm X 279 cm X 99 cm)
Dry Weight	1,428 lbs / 648 kg
Filled Weight (Spa Volume)	5,843 lbs / 2,651 kg
Water Capacity (Spa Volume)	527 US gallons / 2,003 L
Electronic Controls	GECKO-IN. K1000 Spa Keypad
Pump 1	North America (60 Hz): 2- Speed, 3 HP, AMPs 10.0/3.5 Europe (50 Hz): 2- Speed, 2.5 HP, AMPs 8.6/2.8
Pump 2	North America (60 Hz): 2- Speed, 4 HP, AMPs 12.0/1.0 Europe (50 Hz): 2- Speed, 3 HP, AMPs 10.0/3.0
Pump 3	North America (60 Hz): 2- Speed, 3 HP, AMPs 10.0/3.5 Europe (50 Hz): 2- Speed, 2.5 HP, AMPs 8.6/2.8
Circulation Pump	North America (60 Hz):1- Speed, 1/12 HP, AMPs 0.8 Europe (50 Hz): 1- Speed, 0.250 KW- HP, AMPs 1
Total Jets	70
Seat A&B Jets	(1)-6020070; (1)-6020071; (2)- 6020072; (1)-6035061
Seat C Jets	(2)-6015053; (2)-6030064; (1)-6020071; (2)-6035064
Seat D Jets	(1)-6020071; (2)-6020072; (1)-6020070
Seat E Jets	(2)-6015050; (2)-6015054; (2)-6035062; (2)-6035063; (2)-6035064
Seat F Jets	(2)-6020070; (1)-6030065; (1)-6015051
Seat G Jets	(2)-6030064; (1)-6020071; (2)-6035064
Seat H Jets	(12)-6015051; (8)-6015059
Seat I Jets	(1)-6015051
Footwell	(4)-6015051; (8)-6015057; (2)-6015050
Massage Selectors	YES
Air Controls	3
Water Management System	Pure Water System
LED Lighting	(1) Self Clean Plate with 20 LED lights
Synthetic Cabinet Colours	Midnight Everlast, Driftwood Design.
Acrylic Colours	Alpine Mist, Silver Marble, Pure White.
Headrests	(2)- 8" Pillow Assembly; (2)-Tubular Pillows
Electrical Requirements	North America (60 Hz): 240 V,48 AMP GFCI RATED: 60 AMPs Europe (50 Hz):230V, 16A or suitably rated circuit breaker to comply with local electrical codes. RCD breaker with MC
Warranty	10/5/3 Year limited
Options/ Special Features	<p>1) Northern Falls Package Include:</p> <ul style="list-style-type: none"> • Cascading Hydro fall (includes 3 laminar waterfalls and on/off controller) • Northern Lights (includes 2 LED Cupholders and all other topside controls are lit) <p>2)Chromotherapy Package Include:</p> <ul style="list-style-type: none"> • Deluxe LED & GDN Fx Lighting (includes 3 additional 20 LED Small Lights and Exterior Cabinet Lights shining on the step entry) • Northern Lights (includes 2 LED Cupholder and all other topside controls are lit) <p>3)Tranquillity Package Includes:</p> <ul style="list-style-type: none"> • Deluxe LED & GDN Fx Lighting (includes 3 additional 20 LED Small Lights and Exterior Cabinet Lights shining in the entry step) • Two Premium Hydro Fall Pillows (includes the waterfalls and an on/off controller Waterfalls are lit) <p>4)Hydrotherapy Package Includes:</p> <ul style="list-style-type: none"> • Hydro Flex Air Therapy System-Heated (includes round keypad controller, variable Speed box and air blower) • HydroTher Zone Lighting • Dream Scents on Demand (includes liquid canister and injection air jet) <p>5)Hydrotherapy:</p> <ul style="list-style-type: none"> • Hydro Flex Air Therapy-Heated <p>6)Covers:</p> <ul style="list-style-type: none"> • Hydro wise XL Thermal Shield Cover • Custom Hydro wise Insulating Cover Colour • Opposite Fold Hardcovers • Cover Remover Standard – 2 Required • Cover Remover LP(Under) – 2 Required • Cover Remover Plus (Hydraulic) – 2 Required





7)Lighting:

- Deluxe LED & GDN Fx Lighting (Hydro Fall pillows Lit if ordered)

9)Water Management:

- EZ- Pure Ozone System (Must delete Pure water)

10)Steps:

- Two Tier Universal Step

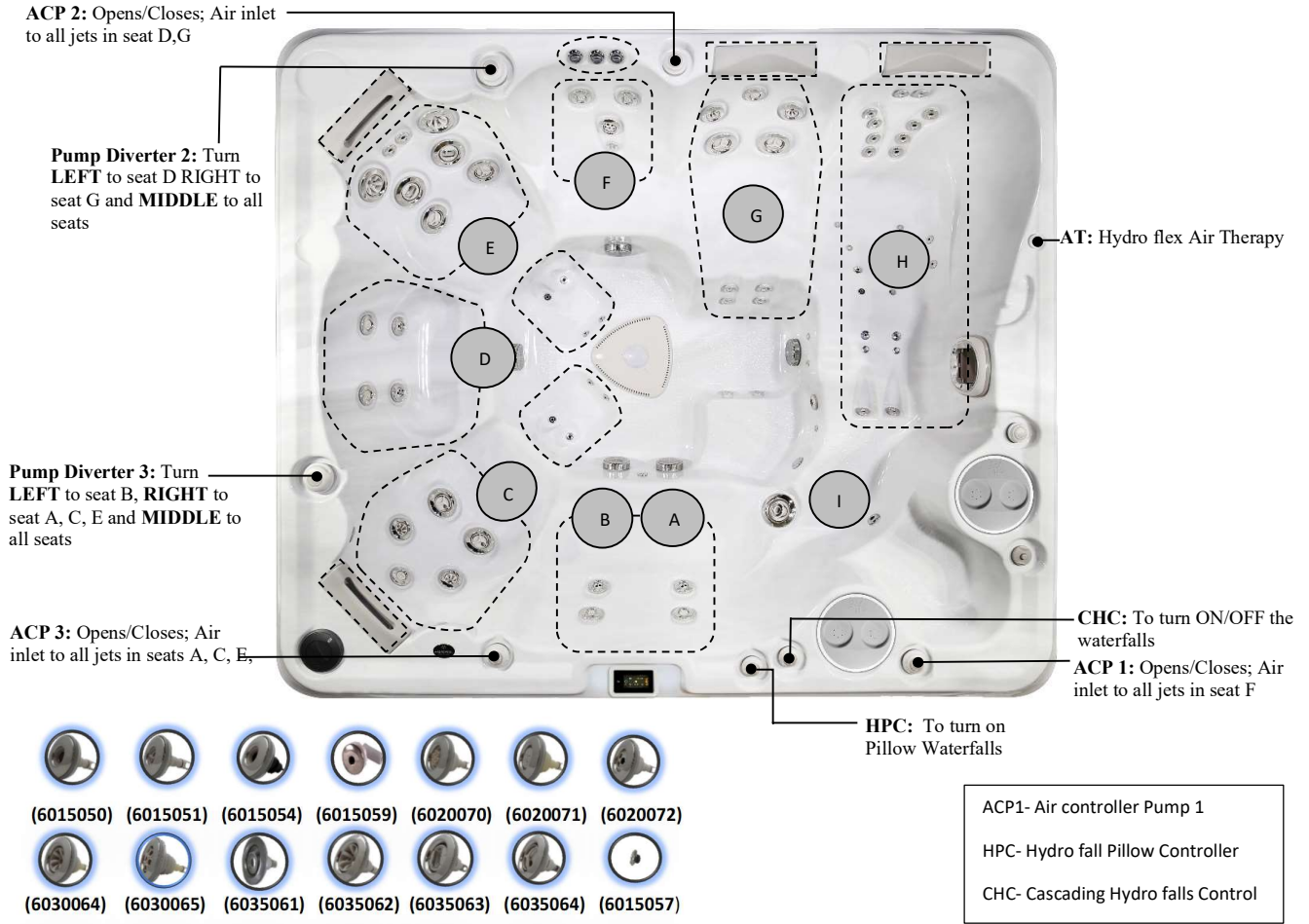
11)Other Popular Upgrades & Options:

- GFCI
- I Command System





Massage Selector/Air Control Diagram



Seat Depth

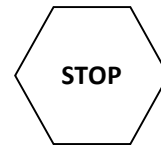
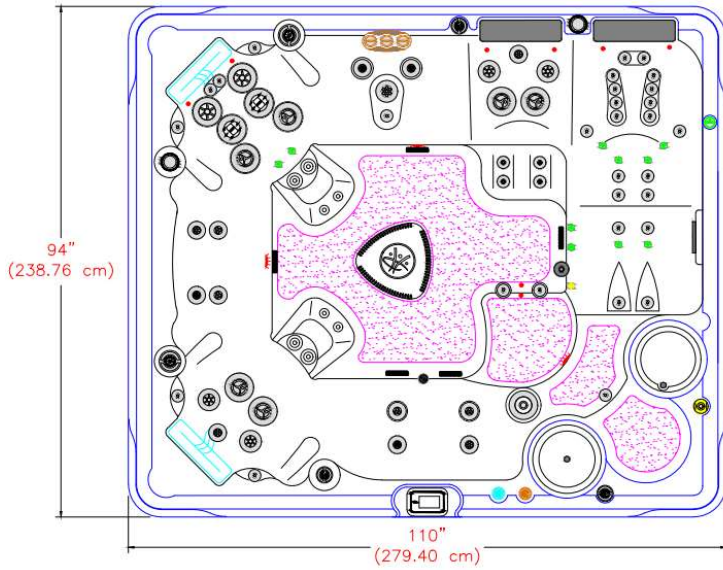
A = 29.00" (73.66cm)	D = 25.25" (64.14cm)	G = 19.75" (50.17cm)
B = 25.75" (65.41cm)	E = 26.25" (66.68cm)	H = 25.625" (65.09cm)
C = 28.625" (72.71cm)	F = 28.375" (72.07cm)	I = 25.625" (65.09cm)



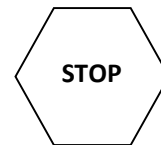
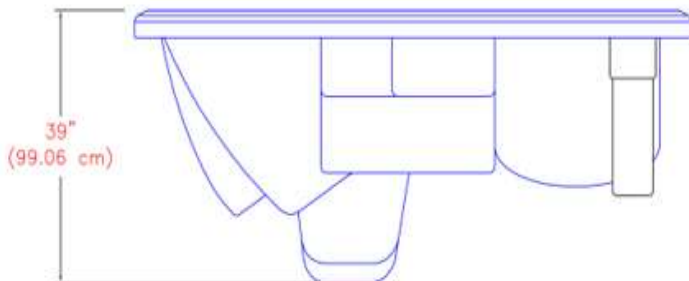
LISTED DIMENSIONS REPRESENT DISTANCE FROM THE TOP OF ACRYLIC TO LOWEST POINT IN THE SEAT. TOLERANCE ±1/16" (0.158CM)



Dimensions



IMPORTANT! Always measure each hot tub for exact dimensions BEFORE designing its foundational support and/or decking



NOTE:

Dimensional tolerances are as follows due to variations in manufacturing:

Length / Width / Height(s): +/- 3/8"

Height Variance (side to side): +/- 1/4"



2023 SIGNATURE SELF CLEAN 970 TITANIUM



Year:	2023
Model:	Self-Clean 970 Titanium
Size:	94"X 110" X 39" / (239 cm X 279 cm X 99 cm)
Series:	Self-Cleaning Titanium Series
Main Keypad:	IN. K1000 Keypad (7005088)
Spa Pack and Heater:	Heater: 4 KW 240 V (NA) & 3 KW 230V (EU) Controller GECKO IN.YE-6 NA / IN.YE-5 EU
Pump #1:	North America (60 Hz): 2- SP, 3 HP, AMPs – 10.0/3.5 (6505155) Europe (50 Hz): 2- SP, 2.5 HP, AMPs – 8.6/2.8 (6510038)
Pump #2:	North America (60 Hz): 2- Speed, 4 HP, AMPs 12.0/1.0 (6505155) Europe (50 Hz): 2- Speed, 3 HP, AMPs 10.0/3.0 (6510040)
Pump #3:	North America (60 Hz): 2- Speed, 3 HP, AMPs 10.0/3.5 (6505159) Europe (50 Hz): 2- Speed, 2.5 HP, AMPs 8.6/2.8 (6510038)
Circulation Pump:	North America (60 Hz): 1- Speed, 1/12 HP, AMPs 0.8 (6505160) Europe (50 Hz): 1- Speed, 0.250 KW- HP, AMPs 1 (6510046)
70 Total Jets:	18- CLUSTERSTORM JET- DIRECTIONAL (6015050) , 4- CLUSTERSTORM JET- RIFLED (6015051) , 4- CLUSTERSTORM JET- SHOULDER JET (6015054) , 8- UNIBODY OZONE CLUSTER JET (6015059) , 4- MINISTORM JET- MULTI-MASSAGE (6020070) , 4- MINISTORM JET- GALAXY (6020071) , 4- MINISTORM JET- PULSE MASSAGE (6020072) , 4- POLYSTORM JET – RIFLED (6030064) , 1- POLYSTORM JET – PULSE MASSAGE (6030065) , 1- POWERSTORM JET – DIRECTIONAL (6035061) , 2- POWERSTORM JET – RIFLED (6035062) , 2- POWERSTORM JET – RESONATOR (6035063) , 6- POWERSTORM JET – TWISTER (6035064) , 8- CMP EURO JET – FOOT (6015057)
Air Controls:	(3)-Air Control (4525089)
Diverter:	(2)-2" Water Diverter (4525086)
Filters:	Self-Clean 75 SQ FT Filter (4520008)





Specification



Seating Capacity	3 Person
Dimensions	65"X 85" X 30" / (165 cm X 216 cm X 76 cm)
Dry Weight	581 lbs / 264 kg
Filled Weight (Spa Volume)	2,241 lbs / 1,017 kg
Water Capacity (Spa Volume)	198 US gallons / 753 L
Electronic Controls	GECKO-IN. K1000 Spa Keypad
Pump 1	North America (60 Hz): 2- Speed, 4 HP, AMPs 12.0/1.0 Europe (50 Hz): 2- Speed, 3 HP, AMPs 10.0/3.0
Pump 2	N/A
Circulation Pump	North America (60 Hz):1- Speed, 1/12 HP, AMPs 0.8 Europe (50 Hz): 1- Speed, 0.250 KW- HP, AMPs 1
Total Jets	30
Seat A Jets	(12)-6015050; (4)-6015059
Seat B Jets	(1)-6035061; (2)-6030064; (2)-6030065; (2)-6030066
Seat C Jets	(2)-6030064; (2)-6030066; (1)-6020071
Footwell	(2)-6015050
Massage Selectors	YES
Air Controls	1
Water Management System	Pure Water System
LED Lighting	(1)- Self clean Plate with 20 LED lights
Synthetic Cabinet Colours	Midnight Everlast, Driftwood Design.
Acrylic Colours	Alpine Mist, Midnight Canyon, Silver Marble, Tuscan Sun, Pure White, Black Opal.
Headrests	(2)- 8" Pillow Assembly; (1)- Small wrap Pillow
Electrical Requirements	North America (60 Hz): 240 V,32 AMP, GFCI RATED : 40 AMPS Europe (50 Hz):230V, 16A or suitably rated circuit breaker to comply with local electrical codes. RCD breakers with MC
Warranty	10/5/3 Year limited
Options/ Special Features	<p>1) Northern Falls Package Include:</p> <ul style="list-style-type: none"> • Cascading Hydro fall (includes 3 laminar waterfalls and on/off controller) • Northern Lights (includes 2 LED Cupholders and all other topside controls are lit) <p>2)Chromotherapy Package Include:</p> <ul style="list-style-type: none"> • Deluxe LED & GDN Fx Lighting (includes 3 additional 20 LED Small Lights and Exterior Cabinet Lights shining on the step entry) • Northern Lights (includes 2 LED Cupholder and all other topside controls are lit) <p>3)Tranquillity Package Includes:</p> <ul style="list-style-type: none"> • Deluxe LED & GDN Fx Lighting (includes 3 additional 20 LED Small Lights and Exterior Cabinet Lights shining in the entry step) • Two Premium Hydro Fall Pillows (includes the waterfalls and an on/off controller Waterfalls are lit) <p>4)Hydrotherapy Package Include:</p> <ul style="list-style-type: none"> • Hydro Flex Air Therapy System-Heated (includes round keypad controller, variable Speed box and air blower) • Dream Scents on Demand (includes liquid canister and injection air jet) <p>5)Hydrotherapy:</p> <ul style="list-style-type: none"> • Hydro Flex Air Therapy -Heated <p>6)Covers:</p> <ul style="list-style-type: none"> • Custom Hydro wise Insulating Cover Colour • Opposite Fold Hardcovers • Cover Remover Standard • Cover Remover LP(Under) • Cover Remover Plus (Hydraulic) <p>7)Lighting:</p> <ul style="list-style-type: none"> • Deluxe LED & GDN Fx Lighting (Hydro Fall pillows Lit if ordered) <p>8)Water Management:</p> <ul style="list-style-type: none"> • EZ- Pure Ozone System (Must delete Pure water) <p>9)Steps:</p> <ul style="list-style-type: none"> • Two Tier Universal Step <p>10)Other Popular Upgrades & Options:</p> <ul style="list-style-type: none"> • GFCI • I Ccommand System





Massage Selector/Air Control Diagram



(6015050)



(6015059)



(6020071)



(6030064)



(6030065)



(6030066)



(6030061)

ACP1- Air controller Pump 1
 HPC- Hydro fall Pillow Controller
 CHC- Cascading Hydro falls Control

Seat Depth

A = 27.00" (68.58cm)

B = 27.25" (69.22cm)

C = 24.25" (61.60cm)

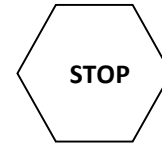
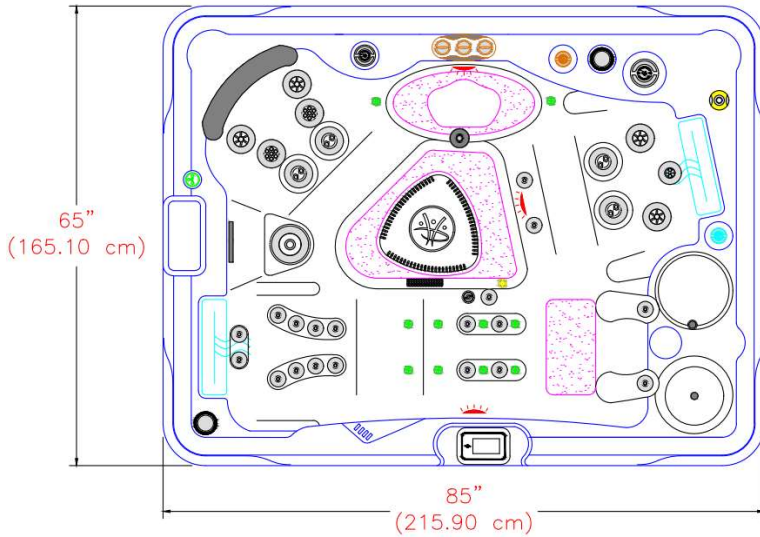


LISTED DIMENSIONS REPRESENT DISTANCE FROM THE TOP OF ACRYLIC TO LOWEST POINT IN THE SEAT. TOLERANCE $\pm 1/16''$ (0.158CM)

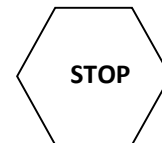
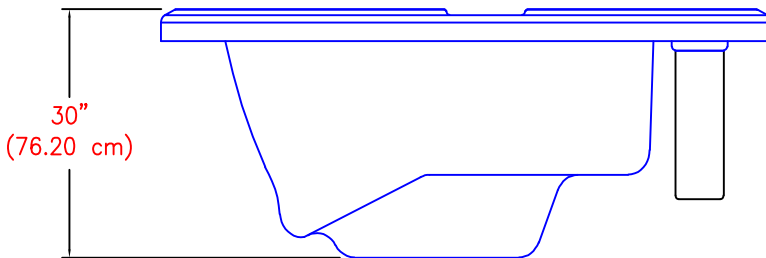




Dimensions



IMPORTANT! Always measure each hot tub for exact dimensions BEFORE designing its foundational support and/or decking



NOTE:

Dimensional tolerances are as follows due to variations in manufacturing:

Length / Width / Height(s): +/- 3/8"

Height Variance (side to side): +/- 1/4"





Year:	2023
Model:	Self-Clean 395 – 30” Gold
Size:	65"X 85" X 30" / (165 cm X 216 cm X 76 cm)
Series:	Self-Cleaning Gold Series
Main Keypad:	IN. K1000 Keypad (7005088)
Spa Pack and Heater:	Heater: 4 KW 240 V (NA) & 3 KW 230V (EU) Controller GECKO IN.YE-3-V3 NA / EU
Pump #1:	North America (60 Hz): 2- SP, 2 HP, AMPs – 12.0/1.0 (6505155) Europe (50 Hz): 2- SP, 2 HP, AMPs – 10.0/3.0 (6510041)
Pump #2:	N/A
Circulation Pump:	North America (60 Hz): 1- Speed, 1/12 HP, AMPs 0.8 (6505160) Europe (50 Hz): 1- Speed, 0.250 KW- HP, AMPs 1 (6510046)
30 Total Jets:	14 - CLUSTERSTORM JET- DIRECTIONAL (6015050) , 4 - UNIBODY OZONE CLUSTER JET (6015059) , 1- MINISTORM JET- GALAXY (6020071) , 4 - POLYSTORM JET – RIFLED (6030064) , 2 - POLYSTORM JET – PULSE MASSAGE (6030065) , 4 - POLYSTORM JET – TWIN ROTO (6030066) , 1- POWERSTORM JET – DIRECTIONAL (6035061)
Air Controls:	(1)- Air Control (4525089)
Diverter:	(1)- 2" Water Diverter (4525086)
Filters:	Self-Clean 50 SQ FT Filter (4520007)





Specification



Seating Capacity.....
 Dimensions.....
 Dry Weight.....
 Filled Weight (Spa Volume)
 Water Capacity (Spa Volume)
 Electronic Controls.....
 Pump 1.....
 Pump 2.....
 Circulation Pump.....
 Total Jets.....
 Seat A Jets.....
 Seat B Jets.....
 Seat D Jets.....
 Footwell
 Massage Selectors.....
 Air Controls.....
 Water Management System.....
 LED Lighting.....
 Synthetic Cabinet Colours.....
 Acrylic Colours.....
 Headrests.....
 Electrical Requirements.....
 Warranty.....
 Options/ Special Features.....

3 Person
 65"X 85" X 37" / (165 cm X 216 cm X 94 cm)
 623 lbs / 283 kg
 2,441 lbs / 1,108 kg
 217 US gallons / 825 L
 GECKO-IN. K1000 Spa Keypad
 North America (60 Hz): 2- Speed, 4 HP, AMPs 12.0/1.0
 Europe (50 Hz): 2- Speed, 3 HP, AMPs 10.0/3.0
 N/A
 North America (60 Hz):1- Speed, 1/12 HP, AMPs 0.8
 Europe (50 Hz): 1- Speed, 0.250 KW- HP, AMPs 1
 30
 (12)-6015050; (4)-6015059
 (1)-6035061; (2)-6030064; (2)-6030065; (2)-6030066
 (2)-6030064; (2)-6030066; (1)-6020071
 (2)-6015050
 YES
 1
 Pure Water System
 (1)- Self clean Plate with 20 LED lights
 Midnight Everlast, Driftwood Design
 Alpine Mist, Midnight Canyon, Silver Marble, Tuscan Sun, Pure White, Black Opal.
 (2)- 8" Pillow Assembly; (1)- Small wrap Pillow
 North America (60 Hz): 240 V,32 AMP, GFCI RATED : 40 AMPS
 Europe (50 Hz):230V, 16A or suitably rated circuit breaker to comply with local electrical codes. RCD breakers with MC
 10/5/3 Year limited

- 1) Northern Falls Package Include:
 - Cascading Hydro fall (includes 3 laminar waterfalls and on/off controller)
 - Northern Lights (includes 2 LED Cupholders and all other topside controls are lit)
- 2)Chromotherapy Package Include:
 - Deluxe LED & GDN Fx Lighting (includes 3 additional 20 LED Small Lights and Exterior Cabinet Lights shining on the step entry)
 - Northern Lights (includes 2 LED Cupholder and all other topside controls are lit)
- 3)Tranquillity Package Includes:
 - Deluxe LED & GDN Fx Lighting (includes 3 additional 20 LED Small Lights and Exterior Cabinet Lights shining in the step entry)
 - Two Premium Hydro Fall Pillows (includes the waterfalls and an on/off controller Waterfalls are lit)
- 4)Hydrotherapy Package Includes:
 - Hydro Flex Air Therapy System-Heated (includes round keypad controller, variable Speed box and air blower)
 - Dream Scents on Demand (includes liquid canister and injection air jet)
- 5)Hydrotherapy:
 - Hydro Flex Air Therapy -Heated
- 6)Covers:
 - Custom Hydro wise Insulating Cover Colour
 - Opposite Fold Hardcovers
 - Cover Remover Standard
 - Cover Remover LP(Under)
 - Cover Remover Plus (Hydraulic)
- 7)Lighting:
 - Deluxe LED & GDN Fx Lighting (Hydro Fall pillows Lit if ordered)
- 8)Water Management:
 - EZ- Pure Ozone System (Must Delete Purewater)
- 9)Steps:
 - Two Tier Universal Step
- 10)Other Popular Upgrades & Options:
 - GFCI
 - I Command System



Massage Selector/Air Control Diagram



ACP1- Air controller Pump 1
 HPC- Hydro fall Pillow Controller
 CHC- Cascading Hydro falls Control

Seat Depth

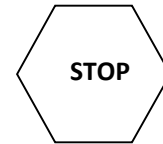
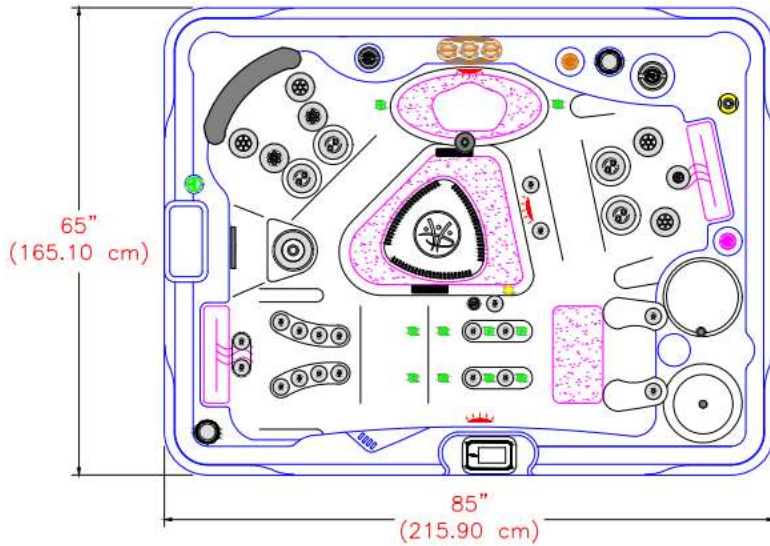
- A = 27.00" (68.58cm)
- B = 27.25" (69.22cm)
- C = 24.25" (61.60cm)



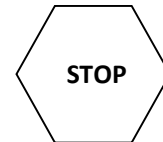
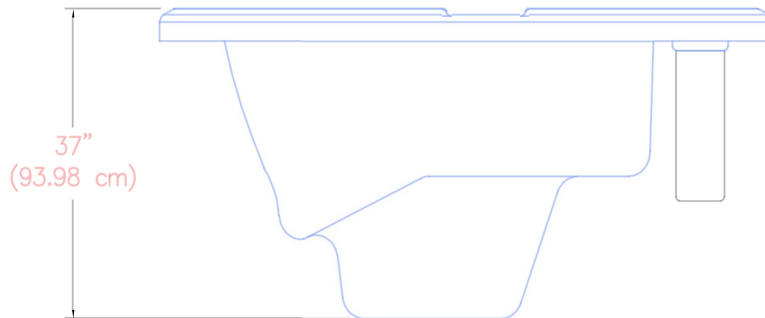
LISTED DIMENSIONS REPRESENT DISTANCE FROM THE TOP OF ACRYLIC TO LOWEST POINT IN THE SEAT. TOLERANCE ±1/16" (0.158CM)



Dimensions



IMPORTANT! Always measure each hot tub for exact dimensions BEFORE designing its foundational support and/or decking



NOTE:

Dimensional tolerances are as follows due to variations in manufacturing:

Length / Width / Height(s): +/- 3/8"

Height Variance (side to side): +/- 1/4"



2023 SIGNATURE SELF CLEAN 395 – 37” GOLD



Year:	2023
Model:	Self-Clean 395 – 37” Gold
Size:	65"X 85" X 37" / (165 cm X 216 cm X 94 cm)
Series:	Self-Cleaning Gold Series
Main Keypad:	IN. K1000 Keypad (7005088)
Spa Pack and Heater:	Heater: 4 KW 240 V (NA) & 3 KW 230V (EU) Controller GECKO IN.YE-3-V3 NA / EU
Pump #1:	North America (60 Hz): 2- SP, 2 HP, AMPs – 12.0/1.0 (6505155) Europe (50 Hz): 2- SP, 2 HP, AMPs – 10.0/3.0 (6510041)
Pump #2:	N/A
Circulation Pump:	North America (60 Hz): 1- Speed, 1/12 HP, AMPs 0.8 (6505160) Europe (50 Hz): 1- Speed, 0.250 KW- HP, AMPs 1 (6510046)
30 Total Jets:	14- CLUSTERSTORM JET- DIRECTIONAL (6015050) , 4- UNIBODY OZONE CLUSTER JET (6015059) , 1- MINISTORM JET- GALAXY (6020071) , 4- POLYSTORM JET – RIFLED (6030064) , 2- POLYSTORM JET – PULSE MASSAGE (6030065) , 4- POLYSTORM JET – TWIN ROTO (6030066) , 1- POWERSTORM JET – DIRECTIONAL (6035061)
Air Controls:	(1)- Air Control (4525089)
Diverter:	(1)- 2" Water Diverter (4525086)
Filters:	Self-Clean 75 SQ FT Filter (4520008)





Specification

Seating Capacity.....
 Dimensions.....
 Dry Weight.....
 Filled Weight (Spa Volume)
 Water Capacity (Spa Volume)
 Electronic Controls.....
 Pump 1.....
 Pump 2.....
 Circulation Pump.....
 Total Jets.....
 Seat A Jets.....
 Seat B Jets.....
 Seat C Jets.....
 Seat D Jets.....
 Footwell
 Massage Selectors.....
 Air Controls.....
 Water Management System.....
 LED Lighting.....
 Synthetic Cabinet Colours.....
 Acrylic Colours.....
 Headrests.....
 Electrical Requirements.....
 Warranty.....
 Options/ Special Features.....

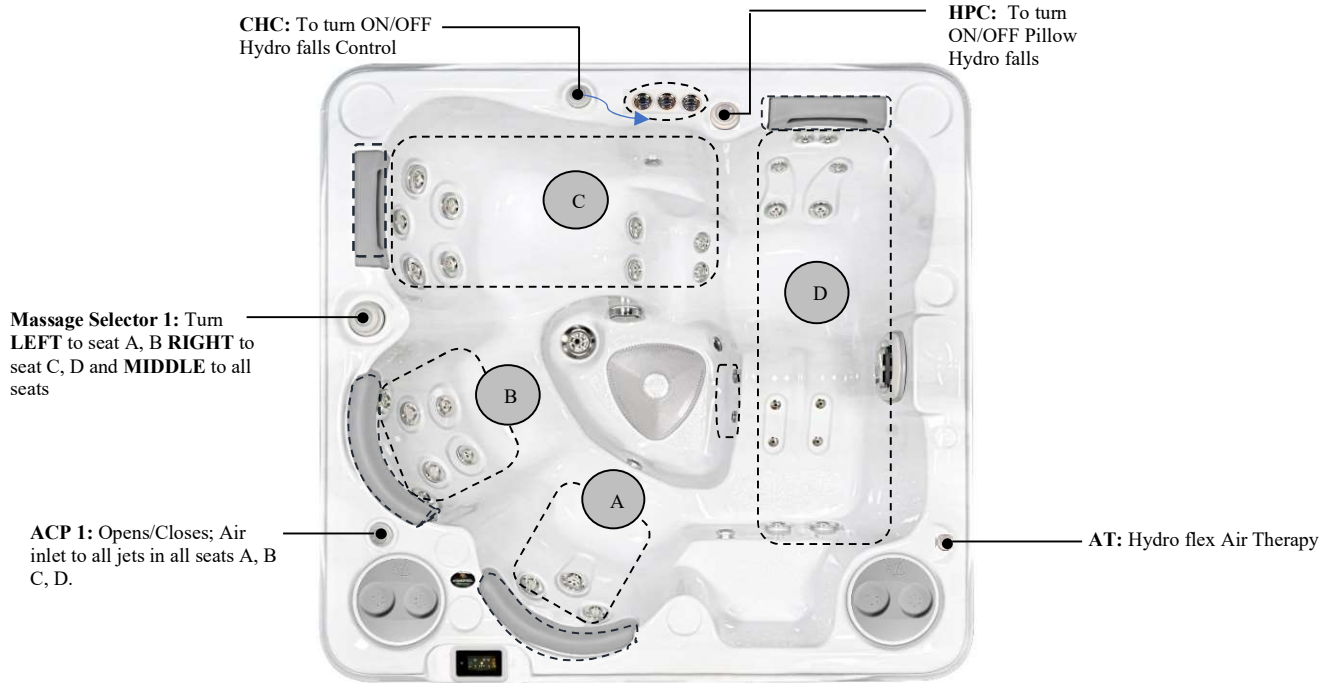
4 Person
 79"X 75" X 37" / (201 cm X 191 cm X 94 cm)
 655 lbs / 297 kg
 2,980 lbs / 1,352 kg
 278 US gallons / 1,055 L
 GECKO-IN. K1000 Spa Keypad
 North America (60 Hz): 2- Speed, 4 HP, AMPs 12.0/1.0
 Europe (50 Hz): 2- Speed, 3 HP, AMPs 10.0/3.0
 N/A
 North America (60 Hz):1- Speed, 1/12 HP, AMPs 0.8
 Europe (50 Hz): 1- Speed, 0.250 KW- HP, AMPs 1
 33
 (2)-6020070; (1)-6030065
 (2)-6020069; (2)-6020070; (2)-6020072
 (1)-6020071; (2)-6030064; (2)-6020072; (2)-6030066; (2)-6020069
 (6)-6015050; (6)-6015059; (2)-6020069
 (1)-6035061
 YES
 1
 Pure Water System
 (1) Self Clean Plate with 20 LED lights
 Midnight Everlast, Driftwood Design
 Alpine Mist, Midnight Canyon, Silver Marble, Tuscan Sun, Pure White, Black Opal.
 (2)- 8" Pillow Assembly; (2)-Small wrap Pillows
 North America (60 Hz): 240 V,32 AMP GFCI RATED: 40 AMPs
 Europe (50 Hz):230V, 16A or suitably rated circuit breaker to comply with local
 electrical codes. RCD breakers with MC.
 10/5/3 Year limited



- 1) Northern Falls Package Include:
 - Cascading Hydro fall (includes 3 laminar waterfalls and on/off controller)
 - Northern Lights (includes 2 LED Cupholders and all other topside controls are lit)
- 2)Chromotherapy Package Include:
 - Deluxe LED & GDN Fx Lighting (includes 3 additional 20 LED Small Lights and Exterior Cabinet Lights shining on the step entry)
 - Northern Lights (includes 2 LED Cupholder and all other topside controls are lit)
- 3)Tranquillity Package Includes:
 - Deluxe LED & GDN Fx Lighting (includes 3 additional 20 LED Small Lights and Exterior Cabinet Lights shining on the step entry)
 - Two Premium Hydro Fall Pillows (includes the waterfalls and an on/off controller Waterfalls are lit)
- 4)Hydrotherapy Package Includes:
 - Hydro Flex Air Therapy System-Heated (includes round keypad controller, variable Speed box and air blower)
 - Dream Scents on Demand (includes liquid canister and injection air jet)
- 5)Hydrotherapy:
 - Hydro Flex Air Therapy -Heated
- 6)Covers:
 - Custom Hydro wise Insulating Cover Colour
 - Opposite Fold Hardcovers
 - Cover Remover Standard
 - Cover Remover LP(Under)
 - Cover Remover Plus (Hydraulic)
- 7)Lighting:
 - Deluxe LED & GDN Fx Lighting (Hydro Fall pillows lit if ordered)
- 8)Water Management:
 - EZ- Pure Ozone System (Must delete Pure Water)
- 9)Steps:
 - Two Tier Universal Step
- 10)Other Popular Upgrades & Options:
 - GFCI
 - I Command System



Massage Selector/Air Control Diagram



ACP1- Air controller Pump 1
 HPC- Hydro fall Pillow Controller
 CHC- Cascading Hydro falls Control

Seat Depth

A = 23.875" (60.64cm)

D = 26.75" (67.95cm)

B = 26.75" (67.95cm)

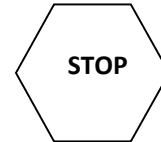
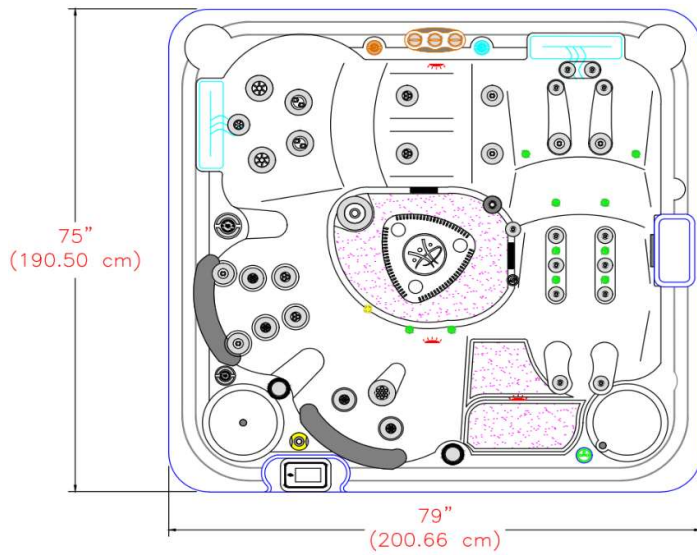
C = 23.75" (60.33cm)



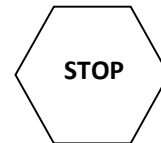
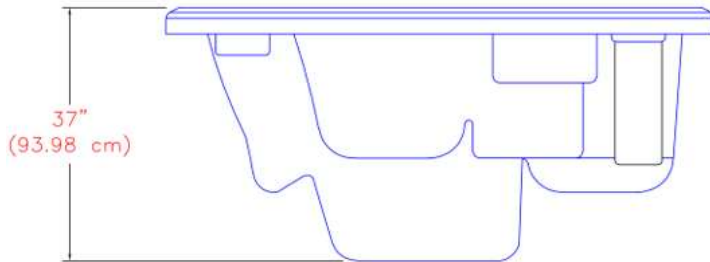
LISTED DIMENSIONS REPRESENT DISTANCE FROM THE TOP OF ACRYLIC TO LOWEST POINT IN THE SEAT. TOLERANCE ±1/16" (0.158CM)



Dimensions



IMPORTANT! Always measure each hot tub for exact dimensions BEFORE designing its foundational support and/or decking



NOTE:

Dimensional tolerances are as follows due to variations in manufacturing:

Length / Width / Height(s): +/- 3/8"

Height Variance (side to side): +/- 1/4"



2023 SIGNATURE SELF CLEAN 495 GOLD



Year:	2023
Model:	Self-Clean 495 Gold
Size:	79"X 75" X 37" / (201 cm X 191 cm X 94 cm)
Series:	Self-Cleaning Gold Series
Main Keypad:	IN. K1000 Keypad (7005088)
Spa Pack and Heater:	Heater: 4 KW 240 V (NA) & 3 KW 230V (EU) Controller GECKO IN.YE-3-V3 NA / EU
Pump #1:	North America (60 Hz): 2- SP, 2 HP, AMPs – 12.0/1.0 (6505155) Europe (50 Hz): 2- SP, 2 HP, AMPs – 10.0/3.0 (6510041)
Pump #2:	N/A
Circulation Pump:	North America (60 Hz): 1- Speed, 1/12 HP, AMPs 0.8 (6505160) Europe (50 Hz): 1- Speed, 0.250 KW- HP, AMPs 1 (6510046)
33 Total Jets:	6- CLUSTERSTORM JET- DIRECTIONAL (6015050) , 6- UNIBODY OZONE CLUSTER JET (6015059) , 6- MINISOTRM JET- DIRECTIONAL (6020069) , 4- MINISTORM JET- MULTI-MASSAGE (6020070) , 3- MINISTORM JET- GALAXY (6020071) , 2- MINISTORM JET- PULSE MASSAGE (6020072) 2- POLYSTORM JET – RIFLED (6030064) , 1- POLYSTORM JET – PULSE MASSAGE (6030065) , 2- POLYSTORM JET – TWIN ROTO (6030066) , 1- POWERSTORM JET – DIRECTIONAL (6035061)
Air Controls:	(1)- Air Control (4525089)
Diverter:	(1)- 2" Water Diverter (4525086)
Filters:	Self-Clean 75 SQ FT Filter (4520008)





Specification

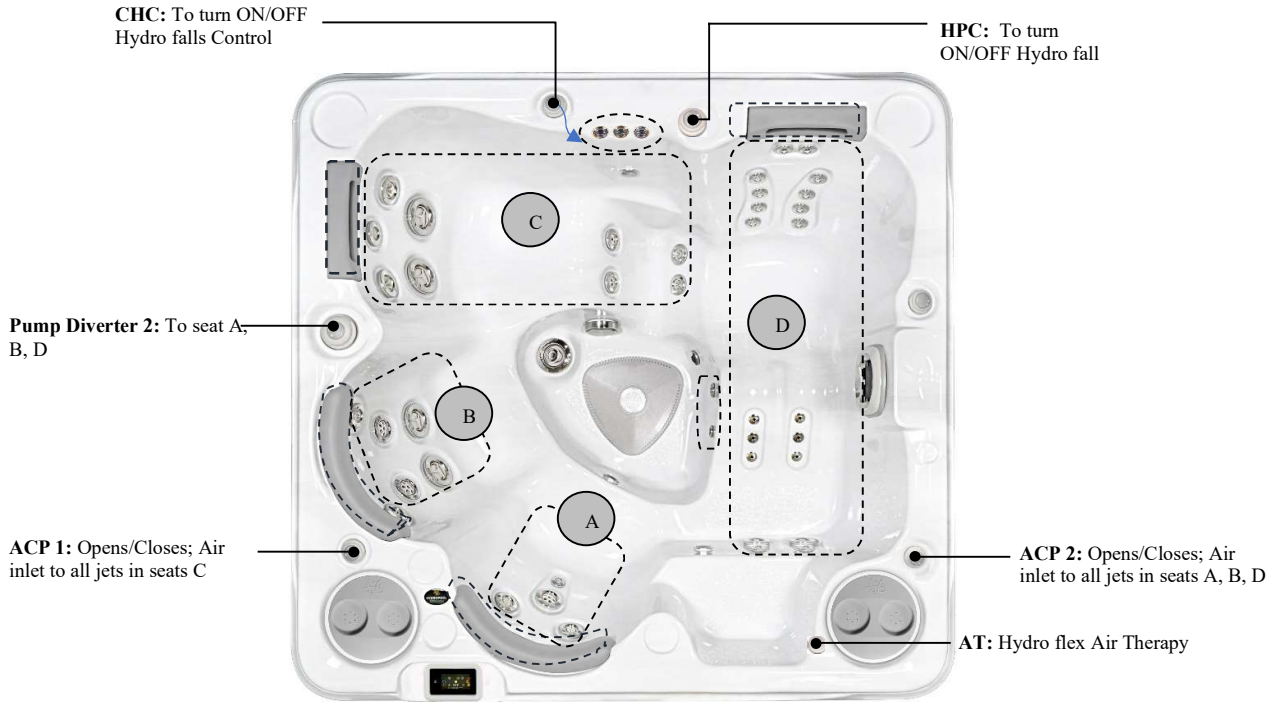
Seating Capacity.....
 Dimensions.....
 Dry Weight.....
 Filled Weight (Spa Volume)
 Water Capacity (Spa Volume)
 Electronic Controls.....
 Pump 1.....
 Pump 2.....
 Circulation Pump.....
 Total Jets.....
 Seat A Jets.....
 Seat B Jets.....
 Seat C Jets.....
 Seat D Jets.....
 Footwell
 Massage Selectors.....
 Air Controls.....
 Water Management System.....
 LED Lighting.....
 Synthetic Cabinet Colours.....
 Acrylic Colours.....
 Headrests.....
 Electrical Requirements.....
 Warranty.....
 Options/ Special Features.....

4 Person
 79"X 75" X 37" / (201 cm X 191 cm X 94 cm)
 655 lbs / 297 kg
 2,980 lbs / 1,352 kg
 278 US gallons / 1,055 L
 GECKO-IN. K1000 Spa Keypad
 North America (60 Hz): 2- Speed, 3 HP, AMPs 10.0/3.5
 Europe (50 Hz): 2- Speed, 2.5 HP, AMPs 8.6/2.8
 North America (60 Hz): 1- Speed, 4 HP, AMPs 12.0/1.0
 Europe (50Hz): 1- Speed, 4 HP, AMPs 14
 North America (60 Hz):1- Speed, 1/12 HP, AMPs 0.8
 Europe (50 Hz): 1- Speed, 0.250 KW- HP, AMPs 1
 40
 (2)-6020070; (1)-6030065; (1)-6015053
 (2)-6020069; (2)-6020070; (2)-6035064
 (1)-6020071; (2)-6030064; (2)-6035064; (2)-6020072; (2)-6020069
 (12)-6015050; (6)-6015059;(2)-6020069
 (1)-6035061
 YES
 2
 Pure Water System
 (1) Self Clean Plate with 20 LED lights
 Midnight Everlast, Driftwood Design.
 Alpine Mist, Midnight Canyon, Silver Marble, Tuscan Sun, Pure White, Black Opal.
 (2)- 8" Pillow Assembly; (2)- Small wrap Pillows
 North America (60 Hz): 240 V,40 AMP GFCI RATED: 50 AMPs
 Europe (50 Hz):230V, 16A or suitably rated circuit breaker to comply with local
 Electrical codes. RCD breakers with MC.
 10/5/3 Year limited
 1) Northern Falls Package Include:
 • Cascading Hydro fall (includes 3 laminar waterfalls and on/off controller)
 • Northern Lights (includes 2 LED Cupholders and all other topside controls are lit)
 2)Chromotherapy Package Include:
 • Deluxe LED & GDN Fx Lighting (includes 3 additional 20 LED Small Lights and Exterior Cabinet Lights shining on the step entry)
 • Northern Lights (includes 2 LED Cupholder and all other topside controls are lit)
 3)Tranquillity Package Includes:
 • Deluxe LED & GDN Fx Lighting (includes 3 additional 20 LED Small Lights and Exterior Cabinet Lights shining on the step entry)
 • Two Premium Hydro Fall Pillows (includes the waterfalls and an on/off controller Waterfalls are lit)
 4)Hydrotherapy Package Includes:
 • Hydro Flex Air Therapy System-Heated (includes round keypad controller, variable Speed box and air blower)
 • HydroTher zone Lighting
 • Dream Scents on Demand (includes liquid canister and injection air jet)
 5)Hydrotherapy:
 • Hydro Flex Air Therapy-Heated
 6)Covers:
 • Custom Hydro wise Insulating Cover Colour
 • Opposite Fold Hardcovers
 • Cover Remover Standard
 • Cover Remover LP(Under)
 • Cover Remover Plus
 7)Lighting:
 • Deluxe LED & GDN Fx Lighting (Hydro Fall pillows Lit if ordered)
 8)Water Management:
 • EZ- Pure Ozone System (Must delete Pure water)
 9)Steps:
 • Two Tier Universal Step
 10)Other Popular Upgrades & Options:
 • GFCI
 • I Command System





Massage Selector/Air Control Diagram



ACP1&2- Air controller Pump 1&2
 HPC- Hydro fall Pillow Controller
 CHC- Cascading Hydro falls Control

Seat Depth

A = 23.875" (60.64cm)
 B = 26.75" (67.95cm)
 C = 23.75" (60.33cm)

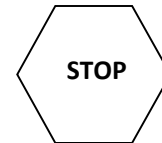
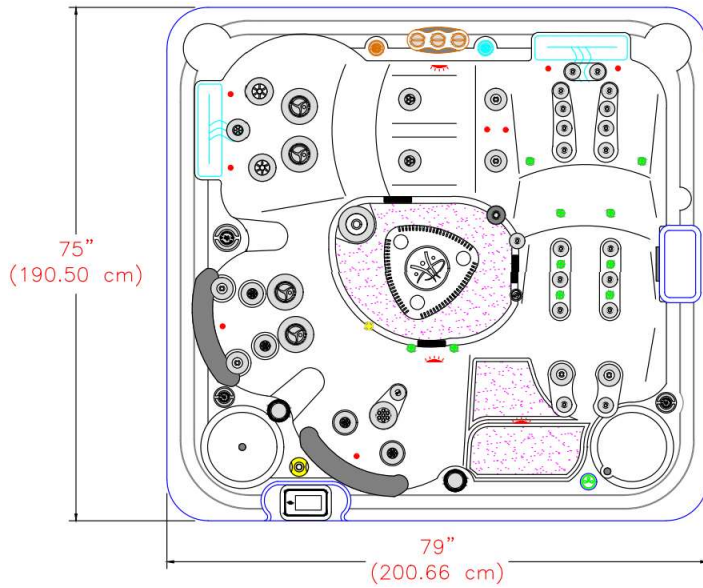
D = 26.75" (67.95cm)



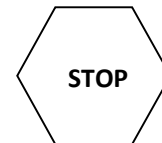
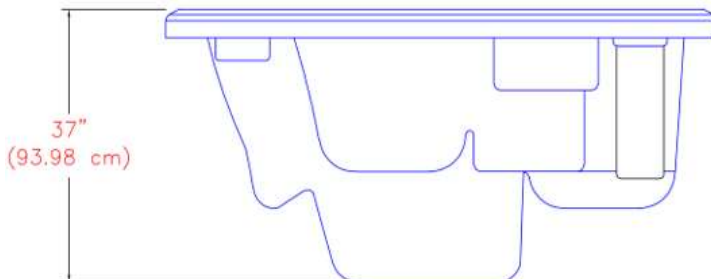
LISTED DIMENSIONS REPRESENT DISTANCE FROM THE TOP OF ACRYLIC TO LOWEST POINT IN THE SEAT. TOLERANCE ±1/16" (0.158CM)



Dimensions



IMPORTANT! Always measure each hot tub for exact dimensions BEFORE designing its foundational support and/or decking



NOTE:

Dimensional tolerances are as follows due to variations in manufacturing:

Length / Width / Height(s): +/- 3/8"

Height Variance (side to side): +/- 1/4"



2023 SIGNATURE SELF CLEAN 495 PLATINUM



Year:	2023
Model:	Self-Clean 495 Platinum
Size:	79"X 75" X 37" / (201 cm X 191 cm X 94 cm)
Series:	Self-Cleaning Platinum Series
Main Keypad:	IN. K1000 Keypad (7005088)
Spa Pack and Heater:	Heater: 4 KW 240 V (NA) & 3 KW 230V (EU) Controller GECKO IN.YE-6 NA / IN.YE-5 EU
Pump #1:	North America (60 Hz): 2- Speed, 3 HP, AMPs 10/3.5 (6505159) Europe (50 Hz): 2- Speed, 2.5 HP, AMPs 10.0/3.0 (6510038)
Pump #2:	North America (60 Hz): 1- Speed, 4 HP, AMPs 12.0/1.0 (6505155) Europe (50 Hz): 1- Speed, 4 HP, AMPs 14 (6510040)
Circulation Pump:	North America (60 Hz): 1- Speed, 1/12 HP, AMPs 0.8 (6505160) Europe (50 Hz): 1- Speed, 0.250 KW- HP, AMPs 1 (6510046)
40 Total Jets:	12- CLUSTERSTORM JET- DIRECTIONAL (6015050) , 1- CLUSTERSTORM JET- TWIN ROTO (6015053) , 6- UNIBODY OZONE CLUSTER JET (6015059) , 6- MINISOTRM JET- DIRECTIONAL (6020069) , 4- MINISTORM JET- MULTI-MASSAGE (6020070) , 1- MINISTORM JET- GALAXY (6020071) , 2- MINISTORM JET- PULSE MASSAGE (6020072) , 2- POLYSTORM JET – RIFLED (6030064) , 1- POLYSTORM JET – PULSE MASSAGE (6030065) , 1- POWERSTORM JET – DIRECTIONAL (6035061) , 4- POWERSTORM JET – TWISTER (6035064)
Air Controls:	(2)- Air Control (4525089)
Diverter:	(1)- 2" Water Diverter (4525086)
Filters:	Self-Clean 75 SQ FT Filter (4520008)





Specification

Seating Capacity.....
 Dimensions.....
 Dry Weight.....
 Filled Weight (Spa Volume)
 Water Capacity (Spa Volume)
 Electronic Controls.....
 Pump 1.....
 Pump 2.....
 Circulation Pump.....
 Total Jets.....
 Seat A Jets.....
 Seat B Jets.....
 Seat C Jets.....
 Seat D Jets.....
 Seat E Jets.....
 Footwell
 Massage Selectors.....
 Air Controls.....
 Water Management System.....
 LED Lighting.....
 Synthetic Cabinet Colours.....
 Acrylic Colours.....
 Headrests.....
 Electrical Requirements.....
 Warranty.....
 Options/ Special Features.....

4-5 Person
 80"X 80" X 37" / (203 cm X 203 cm X 94 cm)
 676 lbs / 307 kg
 3,143 lbs / 1,426 kg
 295 US gallons / 1,119 L
 GECKO-IN. K1000 Spa Keypad
 North America (60 Hz): 2- Speed, 4 HP, AMPs 12.0/1.0
 Europe (50 Hz): 2- Speed, 3 HP, AMPs 10.0/3.0
 N/A
 North America (60 Hz):1- Speed, 1/12 HP, AMPs 0.8
 Europe (50 Hz): 1- Speed, 0.250 KW- HP, AMPs 1
 34
 (1)-6020071; (2)-6030064; (2)-6030066
 (1)-6020072
 (2)-6015054; (2)-6030064; (2)-6030065; (2)-6030066
 (2)-6020070; (1)-6030065
 (6)-6015050; (6)-6015059; (2)-6020069; (1)-6035061
 (2)-6020069
 YES
 1
 Pure Water System
 (1) Self Clean Plate with 20 LED lights
 Midnight Everlast, Driftwood Design
 Alpine Mist, Midnight Canyon, Silver Marble, Tuscan Sun, Pure White, Black Opal.
 (2)- 8" Pillow Assembly; (1)- Small wrap Pillow
 North America (60 Hz): 240 V,32 AMP GFCI RATED: 40 AMPs
 Europe (50 Hz):230V, 16A or suitably rated circuit breaker to comply with local electrical codes. RCD breakers with MC.
 10/5/3 Year limited
 1) Northern Falls Package Include:
 • Cascading Hydro fall (includes 3 laminar waterfalls and on/off controller)
 • Northern Lights (includes 2 LED Cupholders and all other topside controls are lit)
 2)Chromotherapy Package Include:
 • Deluxe LED & GDN Fx Lighting (includes 3 additional 20 LED Small Lights and Exterior Cabinet Lights shining on the step entry)
 • Northern Lights (includes 2 LED Cupholder and all other topside controls are lit)
 3)Tranquillity Package Includes:
 • Deluxe LED & GDN Fx Lighting (includes 3 additional 20 LED Small Lights and Exterior Cabinet Lights shining on the step entry)
 • Two Premium Hydro Fall Pillows (includes the waterfalls and an on/off controller Waterfalls are lit)
 4)Hydrotherapy Package Includes:
 • Hydro Flex Air Therapy System-Heated (includes round keypad controller, variable Speed box and air blower)
 • Dream Scents on Demand (includes liquid canister and injection air jet)
 5)Hydrotherapy:
 • Hydro Flex Air Therapy -Heated
 6)Covers:
 • Custom Hydro wise Insulating Cover Colour
 • Opposite Fold Hardcovers
 • Cover Remover Standard
 • Cover Remover LP(Under)
 • Cover Remover Plus (Hydraulic)
 7)Lighting:
 • Deluxe LED & GDN Fx Lighting (Hydro Fall pillows Lit if ordered)
 8)Water Management:
 • EZ- Pure Ozone System (Must delete Pure water)
 9)Steps:
 • Two Tier Universal Step
 10)Other Popular Upgrades & Options:
 • GFCI
 • I Command System

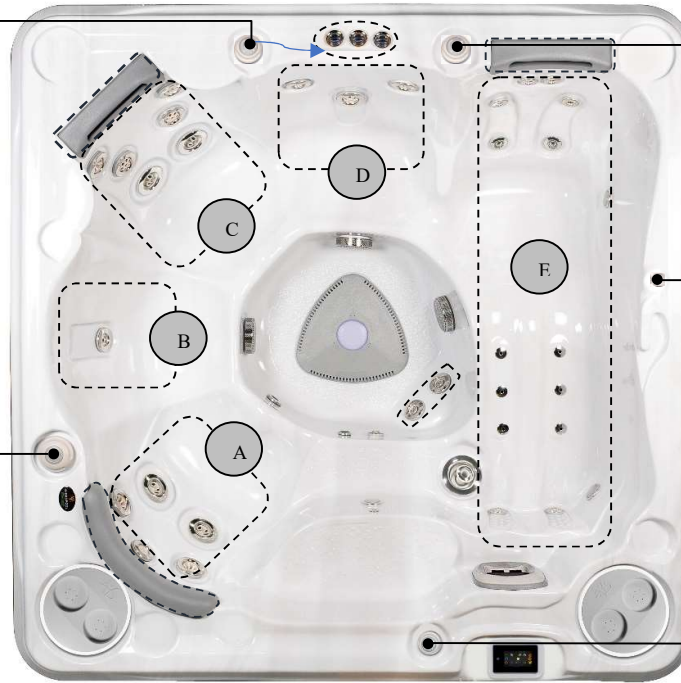




Massage Selector/Air Control Diagram

CHC: To turn ON/OFF Hydro falls Control

HPC: To turn ON/OFF Pillow Hydro falls



AT: Hydro flex Air Therapy

Massage Selector 1: Turn **LEFT** to seat A, B, C **RIGHT** to seat D, E and **MIDDLE** to all seats

ACP 1: Opens/Closes; Air inlet to all jets in seats D, E A, B, C



(6015050)



(6015054)



(6015059)



(6020069)



(6020070)



(6020071)



(6020072)



(6030064)



(6030065)



(6030066)



(6035061)



(6035064)

ACP1- Air controller Pump 1
HPC- Hydro fall Pillow Controller
CHC- Cascading Hydro falls Control

Seat Depth

A = 25.625" (65.09cm)

D = 25.50" (64.77cm)

B = 25.625" (65.09cm)

E = 26.25" (66.68cm)

C = 27.75" (70.49cm)

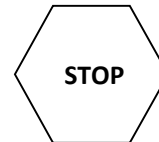
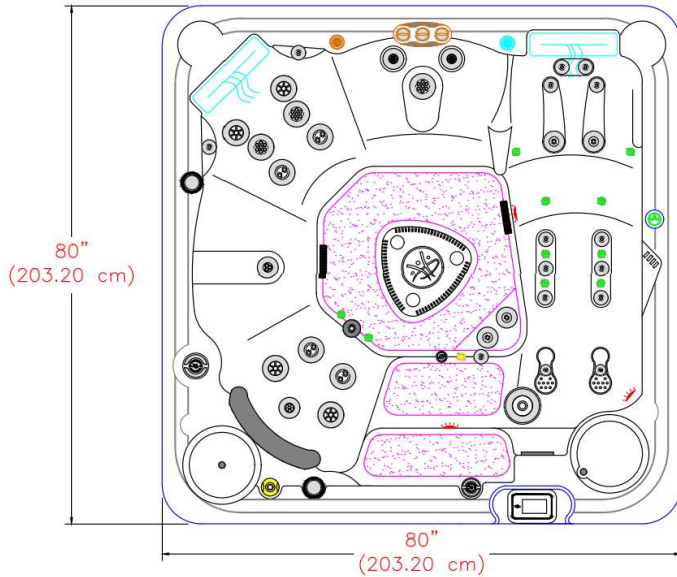


LISTED DIMENSIONS REPRESENT DISTANCE FROM THE TOP OF ACRYLIC TO LOWEST POINT IN THE SEAT. TOLERANCE ±1/16" (0.158CM)

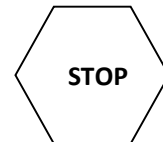
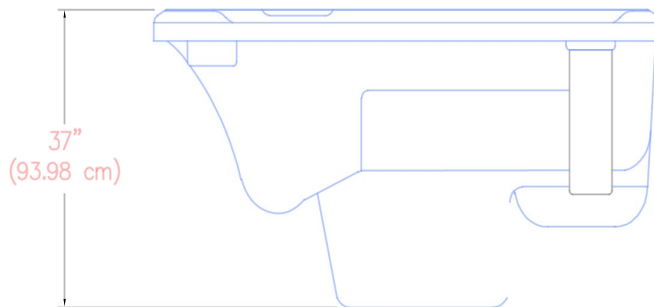




Dimensions



IMPORTANT! Always measure each hot tub for exact dimensions BEFORE designing its foundational support and/or decking



NOTE:

Dimensional tolerances are as follows due to variations in manufacturing:

Length / Width / Height(s): +/- 3/8"

Height Variance (side to side): +/- 1/4"



2023 SIGNATURE SELF CLEAN 570 GOLD



Year:	2023
Model:	Self-Clean 570 Gold
Size:	80"X 80" X 37" / (203 cm X 203 cm X 94 cm)
Series:	Self-Cleaning Gold Series
Main Keypad:	IN. K1000 Keypad (7005088)
Spa Pack and Heater:	Heater: 4 KW 240 V (NA) & 3 KW 230V (EU) Controller GECKO IN.YE-3-V3 NA / EU
Pump #1:	North America (60 Hz): 2- SP, 4 HP, AMPs – 12.0/1.0 (6505155) Europe (50 Hz): 2- SP, 3 HP, AMPs – 10.0/3.0 (6510041)
Pump #2:	N/A
Circulation Pump:	North America (60 Hz): 1- Speed, 1/12 HP, AMPs 0.8 (6505160) Europe (50 Hz): 1- Speed, 0.250 KW- HP, AMPs 1 (6510046)
34 Total Jets:	6- CLUSTERSTORM JET- DIRECTIONAL (6015050) , 2- CLUSTERSTORM JET- SHOULDER JET (6015054) , 6- UNIBODY OZONE CLUSTER JET (6015059) , 4- MINISOTRM JET- DIRECTIONAL (6020069) , 2- MINISTORM JET- MULTI-MASSAGE (6020070) , 1- MINISTORM JET- GALAXY (6020071) , 1- MINISTORM JET- PULSE MASSAGE (6020072) 4- POLYSTORM JET – RIFLED (6030064) , 3- POLYSTORM JET – PULSE MASSAGE (6030065) , 4- POLYSTORM JET – TWIN ROTO (6030066) , 1- POWERSTORM JET – DIRECTIONAL (6035061)
Air Controls:	(1)- Air Control (4525089)
Diverter:	(1)- 2" Water Diverter (4525086)
Filters:	Self-Clean 75 SQ FT Filter (4520008)





Specifications

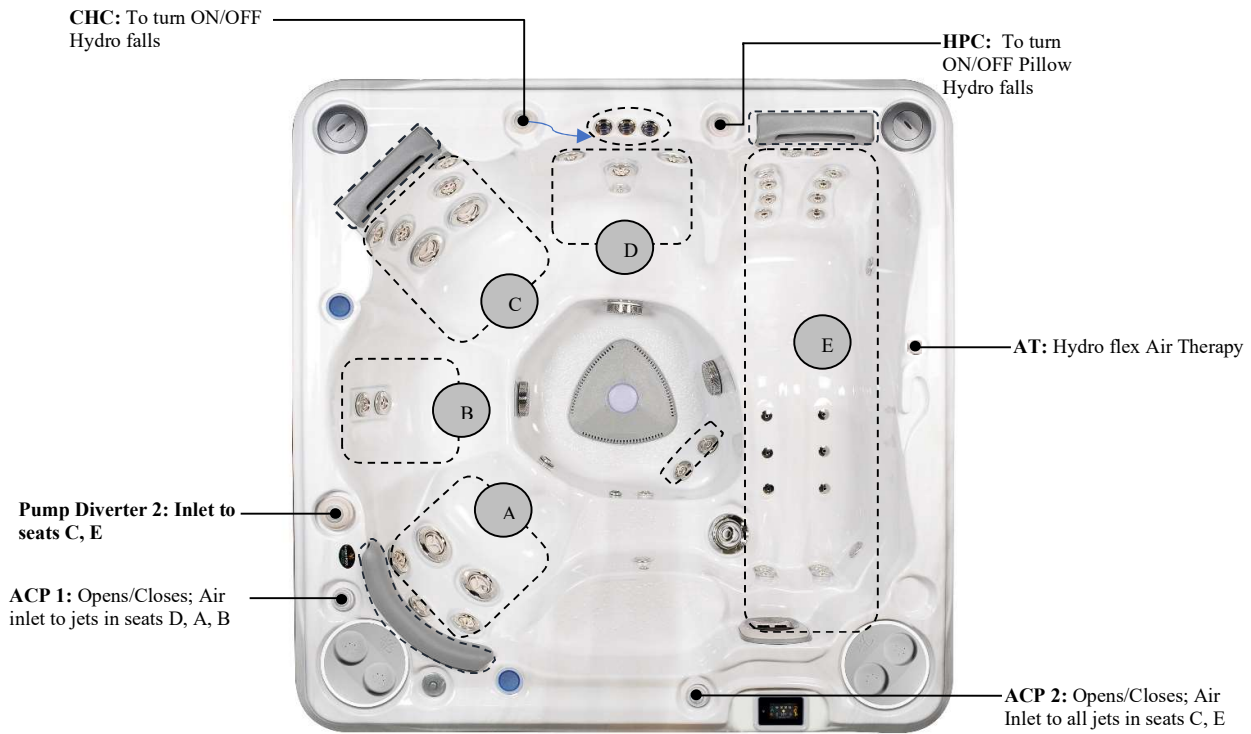
Seating Capacity.....
 Dimensions.....
 Dry Weight.....
 Filled Weight (Spa Volume)
 Water Capacity (Spa Volume)
 Electronic Controls.....
 Pump 1.....
 Pump 2.....
 Circulation Pump.....
 Total Jets.....
 Seat A Jets.....
 Seat B Jets.....
 Seat C Jets.....
 Seat D Jets.....
 Seat E Jets.....
 Footwell
 Massage Selectors.....
 Air Controls.....
 Water Management System.....
 LED Lighting.....
 Synthetic Cabinet Colours.....
 Acrylic Colours.....
 Headrests.....
 Electrical Requirements.....
 Warranty.....
 Options/ Special Features.....

4-5 Person
 80"X 80" X 37" / (203 cm X 203 cm X 94 cm)
 676 lbs / 307 kg
 3,143 lbs / 1,426 kg
 295 US gallons / 1,119 L
 GECKO-IN. K1000 Spa Keypad
 North America (60 Hz): 2- Speed, 3 HP, AMPS 10.0/3.5
 Europe (50 Hz): 2- Speed, 2.5 HP, AMPS 8.6/2.8
 North America (60 Hz): 1-Speed, 4 HP, AMPS 12.0/1.0
 Europe (50 Hz): 1- Speed, 4 HP, AMPS 14
 North America (60 Hz):1- Speed, 1/12 HP, AMPS 0.8
 Europe (50 Hz): 1- Speed, 0.250 KW- HP, AMPS 1
 42
 (2)-6030064; (2)-6035064; (1)-6020071
 (1)-6020069; (1)-6020072
 (2)-6015054; (2)-6030064; (2)-6030065; (2)-6035064
 (2)-6020070; (1)-6030065; (1)-6015053
 (14)-6015050; (6)-6015059; (1)-6035061
 (2)-6020069
 YES
 2
 Pure Water System
 (1) Self Clean Plate with 20 LED lights
 Midnight Everlast, Driftwood Design
 Alpine Mist, Midnight Canyon, Silver Marble, Tuscan Sun, Pure White, Black Opal.
 (2)- 8" Pillow Assembly; (1)-Small wrap Pillow
 North America (60 Hz): 240 V,40 AMP GFCI RATED: 50 AMPS
 Europe (50 Hz):230V, 16A or suitably rated circuit breaker to comply with local electrical codes. RCD breakers with MC.
 10/5/3 Year limited
 1) Northern Falls Package Include:
 • Cascading Hydro fall (includes 3 laminar waterfalls and on/off controller)
 • Northern Lights (includes 2 LED Cupholders and all other topside controls are lit)
 2)Chromotherapy Package Include:
 • Deluxe LED & GDN Fx Lighting (includes 3 additional 20 LED Small Lights and Exterior Cabinet Lights shining on the step entry)
 • Northern Lights (includes 2 LED Cupholder and all other topside controls are lit)
 3)Tranquillity Package Includes:
 • Deluxe LED & GDN Fx Lighting (includes 3 additional 20 LED Small Lights and Exterior Cabinet Lights shining on the step entry)
 • Two Premium Hydro Fall Pillows (includes the waterfalls and an on/off controller Waterfalls are lit)
 4)Hydrotherapy Package Includes:
 • Hydro Flex Air Therapy System-Heated (includes round keypad controller, variable Speed box and air blower)
 • HydroTher Zone Lighting
 • Dream Scents on Demand (includes liquid canister and injection air jet)
 5)Hydrotherapy:
 • Hydro Flex Air Therapy -Heated
 6)Covers:
 • Custom Hydro wise Insulating Cover Colour
 • Opposite Fold Hardcovers
 • Cover Remover Standard
 • Cover Remover LP(Under)
 • Cover Remover Plus (Hydraulic)
 7)Lighting:
 • Deluxe LED & GDN Fx Lighting (Hydro Fall pillows Lit if ordered)
 8)Water Management:
 • EZ- Pure Ozone System (Must delete Pure water)
 9)Steps:
 • Two Tier Universal Step
 10)Other Popular Upgrades & Options:
 • GFCI
 • I Command System





Massage Selector/Air Control Diagram



ACP1&2- Air controller Pump 1&2
 HPC- Hydro fall Pillow Controller
 CHC- Cascading Hydro falls Control

Seat Depth

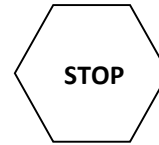
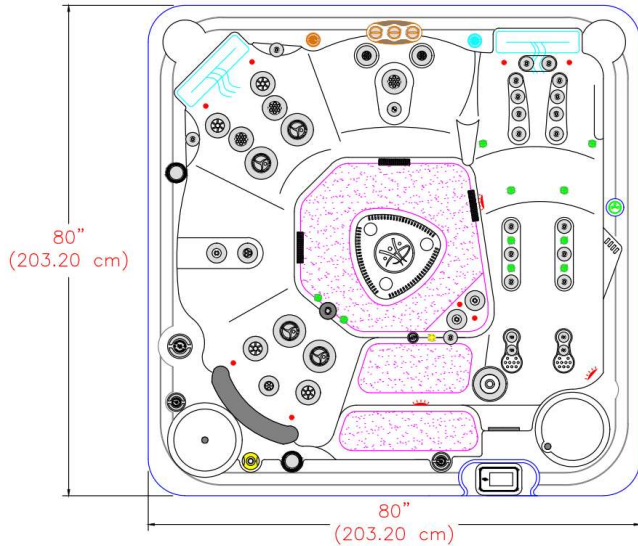
- A = 25.625" (65.09cm)
- B = 25.625" (65.09cm)
- C = 27.75" (70.49cm)
- D = 25.50" (64.77cm)
- E = 26.25" (66.68cm)



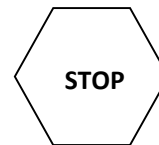
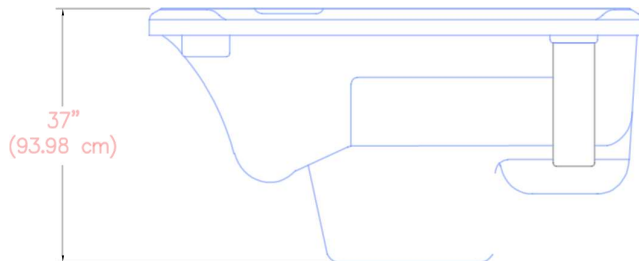
LISTED DIMENSIONS REPRESENT DISTANCE FROM THE TOP OF ACRYLIC TO LOWEST POINT IN THE SEAT. TOLERANCE ±1/16" (0.158CM)



Dimensions



IMPORTANT! Always measure each hot tub for exact dimensions BEFORE designing its foundational support and/or decking



NOTE:

Dimensional tolerances are as follows due to variations in manufacturing:

Length / Width / Height(s): +/- 3/8"

Height Variance (side to side): +/- 1/4"



2023 SIGNATURE SELF CLEAN 570 PLATINUM



Year:	2023
Model:	Self-Clean 570 Platinum
Size:	80"X 80" X 37" / (203 cm X 203 cm X 94 cm)
Series:	Self-Cleaning Platinum Series
Main Keypad:	IN. K1000 Keypad (7005088)
Spa Pack and Heater:	Heater: 4 KW 240 V (NA) & 3 KW 230V (EU) Controller GECKO IN.YE-6 NA / IN.YE-5 EU
Pump #1:	North America (60 Hz): 2- Speed, 3 HP, AMPs 10.0/3.5 (6505159) Europe (50 Hz): 2- Speed, 2.5 HP, AMPs 8.6/2.8 (6510038)
Pump #2:	North America (60 Hz): 2- Speed, 4 HP, AMPs 12.0/1.0 (6505155) Europe (50 Hz): 1- Speed, 4 HP, AMPs 14 (6510040)
Circulation Pump:	North America (60 Hz): 1- Speed, 1/12 HP, AMPs 0.8 (6505160) Europe (50 Hz): 1- Speed, 0.250 KW- HP, AMPs 1 (6510046)
42 Total Jets:	12- CLUSTERSTORM JET- DIRECTIONAL (6015050) , 1- CLUSTERSTORM JET – TWIN ROTO (6015053) , 2- CLUSTERSTORM JET – SHOULDER JET (6015054) , 6- UNIBODY OZONE CLUSTER JET (6015059) , 3- MINISOTRM JET- DIRECTIONAL (6020069) , 2- MINISTORM JET- MULTI-MASSAGE (6020070) , 1- MINISTORM JET- GALAXY (6020071) , 3- MINISTORM JET- PULSE MASSAGE (6020072) 4- POLYSTORM JET – RIFLED (6030064) , 3- POLYSTORM JET – PULSE MASSAGE (6030065) , 1- POWERSTORM JET – DIRECTIONAL (6035061) , 4- POWERSTORM JET – TWISTER (6035064)
Air Controls:	(2)- Air Control (4525089)
Diverter:	(1)- 2" Water Diverter (4525086)
Filters:	Self-Clean 75 SQ FT Filter (4520008)

