



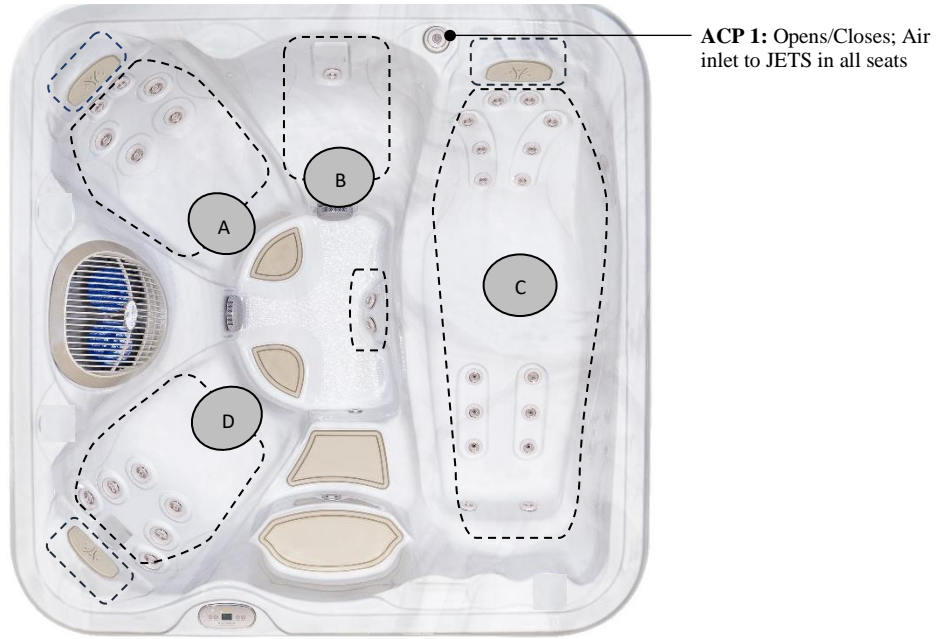
Specification

<b>Seating Capacity</b> .....	4-5 persons
<b>Dimensions</b> .....	80"X 80" X 36" / (203 cm X 203 cm X 91cm)
<b>Dry Weight</b> .....	585 lbs / 265 kg
<b>Filled Weight (Spa Volume)</b> .....	3,176 lbs / 1,441 kg
<b>Water Capacity (Spa Volume)</b> .....	309 US gallons/ 1176L
<b>Electronic Controls</b> .....	GECKO-IN. K362 Keypad and overlay
<b>Pump 1</b> .....	Europe (50 Hz): 2- Speed, 3 HP, AMPs – 10.0/3.0
<b>Pump 2</b> .....	N/A
<b>Circulation Pump</b> .....	N/A
<b>Total Jets</b> .....	29
<b>Seat A Jets</b> .....	(2)-6015081 (4)-6020082
<b>Seat B Jets</b> .....	(1)-6015081
<b>Seat C Jets</b> .....	(14)-6015081
<b>Seat D Jets</b> .....	(6)-6015082
<b>Footwell</b> .....	(2)-6015081
<b>Massage Selectors</b> .....	N/A
<b>Air Controls</b> .....	1
<b>Water Management System</b> .....	(1)- 50 SQ. FT Filters behind filter grill
<b>LED Lighting</b> .....	(1)-20 LED Small Light (lens)
<b>Synthetic Cabinet Colours</b> .....	Designer Harbor Grey, Designer Driftwood Grey
<b>Acrylic Colours</b> .....	Silver Marble
<b>Headrests</b> .....	N/A
<b>Electrical Requirements</b> .....	Europe (50 Hz):230V, 16A or suitably rated circuit breaker to comply with local electrical codes, RCD breakers with MC.
<b>Warranty</b> .....	10/5/3 Year limited
<b>Options/Special Features</b> .....	<p>1) Water Management:</p> <ul style="list-style-type: none"> <li>• EZ-Pure Ozone System</li> <li>• Pure Water System</li> </ul> <p>2) Covers:</p> <ul style="list-style-type: none"> <li>• Custom Hydro wise Insulating Cover Colour</li> <li>• Opposite Fold Hardcovers</li> <li>• Cover Remover Standard</li> <li>• Cover Remover LP (Under)</li> <li>• Cover Remover Plus (Hydraulic)</li> </ul> <p>3) Steps:</p> <ul style="list-style-type: none"> <li>• Two Tier Universal Step</li> </ul> <p>4) Other Upgrades and Options:</p> <ul style="list-style-type: none"> <li>• I Command System</li> </ul>





### Massage Selector/Air Control Diagram



### Seat Depth

A = 26.23" (66.62 cm)

B = 21.40" (54.35 cm)

C = 26.78" (68.02 cm)

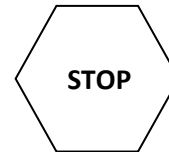
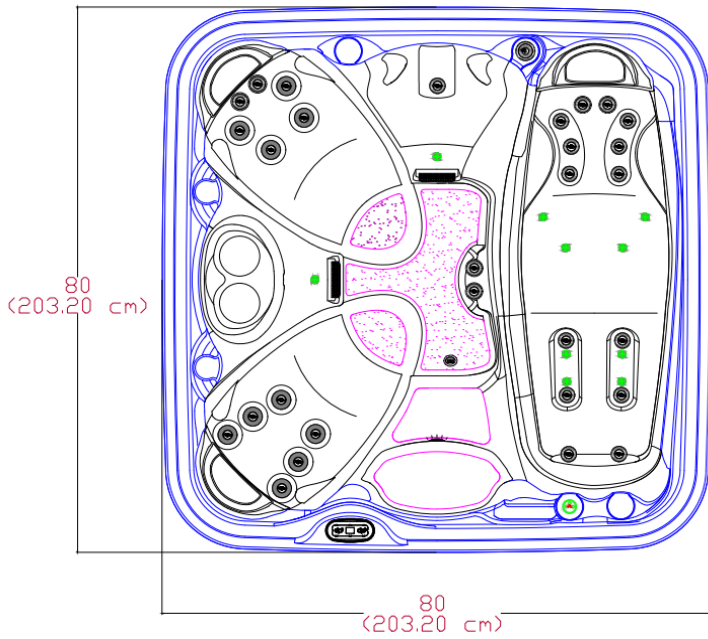
D = 28.00" (71.12 cm)



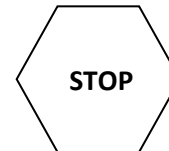
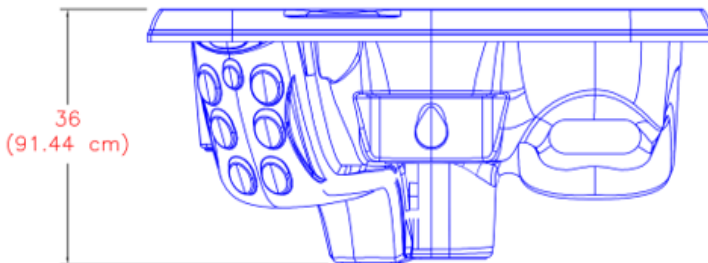
LISTED DIMENSIONS REPRESENT DISTANCE FROM THE TOP OF ACRYLIC TO LOWEST POINT IN THE SEAT. TOLERANCE  $\pm 1/2''$  (0.5CM)



Dimensions



**IMPORTANT! Always measure each hot tub for exact dimensions BEFORE designing its foundational support and/or decking**



**NOTE:**

Dimensional tolerances are as follows due to variations in manufacturing:

Length / Width / Height(s): +/- 3/8"

Height Variance (side to side): +/- 1/4"



## 2023 Serenity Collection SE45L

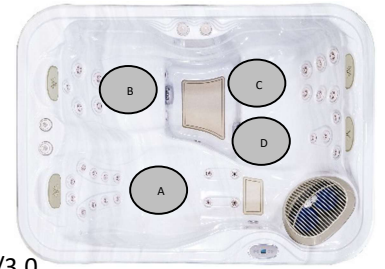


<b>Year:</b>	2023
<b>Model:</b>	Serenity 45L
<b>Size:</b>	80" X 80" X 36" / (203 cm X 203 cm X 91cm)
<b>Series:</b>	Serenity Collection
<b>Main Keypad:</b>	IN. K362 Keypad and Overlay <b>(7005069, 5555334)</b>
<b>Spa Pack and Heater:</b>	Europe:3 KW 240VAC <b>Controller GECKO IN.YE-3 EU</b>
<b>Pump #1:</b>	Europe (50 Hz): 2- SP, 3 HP, AMPs – 10.0/3.0 <b>(6510041)</b>
<b>Pump #2:</b>	N/A
<b>Circulation Pump:</b>	N/A
<b>29 Total Jets:</b>	19-BALBOA LIFESTREAM 2" DIRECT <b>(6015081)</b> 10-BALBOA LIFESTREAM 2.75" DIRECT <b>(6015082)</b>
<b>Air Controls:</b>	(1)- Air Control <b>(4525151)</b>
<b>Diverter:</b>	N/A
<b>Filters:</b>	(1)-SERENITY 50 SQ FT FILTER WITH BROMINATOR <b>(4520038)</b>



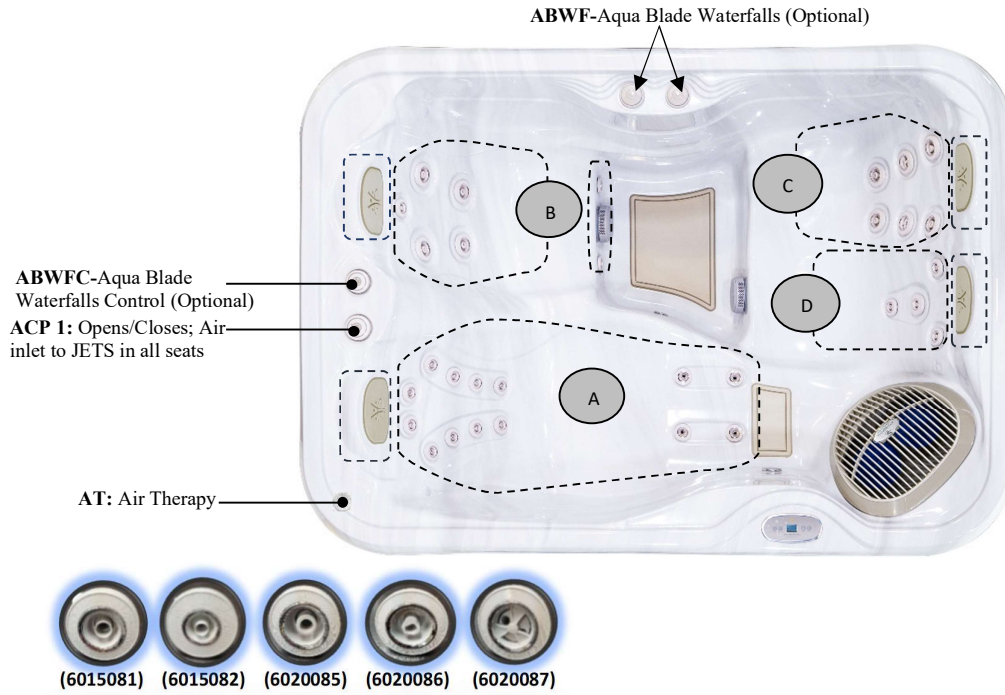
Specification

<b>Seating Capacity</b> .....	3-4 persons
<b>Dimensions</b> .....	85"X 62" X 36" / (216 cm X 157 cm X 91cm)
<b>Dry Weight</b> .....	526 lbs / 239 kg
<b>Filled Weight (Spa Volume)</b> .....	2,564 lbs / 1,163 kg
<b>Water Capacity (Spa Volume)</b> .....	243 US gallons/ 925L
<b>Electronic Controls</b> .....	GECKO-IN. K362 Keypad and overlay
<b>Pump 1</b> .....	North America (60 Hz): 2- Speed, 2 HP, AMPs 12.0/1.0 Europe (50 Hz): 2- Speed, 3 HP, AMPs – 10.0/3.0
<b>Pump 2</b> .....	N/A
<b>Circulation Pump</b> .....	N/A
<b>Total Jets</b> .....	31
<b>Seat A Jets</b> .....	(14)-6015081
<b>Seat B Jets</b> .....	(1)-6015081; (2)-6020085; (2)-6020087
<b>Seat C Jets</b> .....	(2)-6020085; (2)-6020086; (2)-6020087
<b>Seat D Jets</b> .....	(3)-6015081, (1)-6015082
<b>Footwell</b> .....	(2)-6015081
<b>Massage Selectors</b> .....	N/A
<b>Air Controls</b> .....	1
<b>Water Management System</b> .....	(2)- 50 SQ. FT Filters behind filter grill
<b>LED Lighting</b> .....	(1)-20 LED Small Light (lens)
<b>Synthetic Cabinet Colours</b> .....	Designer Harbor Grey, Designer Driftwood Grey
<b>Acrylic Colours</b> .....	Silver Marble, Pure White, Alpine Mist, Tuscan Sun, Black Opal and Midnight Canyon
<b>Headrests</b> .....	N/A
<b>Waterfalls</b> .....	(2)-Aqua Blade Waterfalls ( <b>Optional – IN MOONFALL PACKAGE ONLY</b> )
<b>Electrical Requirements</b> .....	North America (60 Hz): 240V, 32 AMPs, 40 AMP GFCI Europe (50 Hz):230V, 16A or suitably rated circuit breaker to comply with local electrical codes, RCD breakers with MC.
<b>Warranty</b> .....	10/5/3 Year limited
<b>Options/Special Features</b> .....	1) Water Management: <ul style="list-style-type: none"> <li>• EZ-Pure Ozone System</li> <li>• Pure Water System</li> </ul> 2) Covers: <ul style="list-style-type: none"> <li>• Custom Hydrowise Insulating Cover Colour</li> <li>• Opposite Fold Hardcovers</li> <li>• Cover Remover Standard</li> <li>• Cover Remover LP (Under)</li> <li>• Cover Remover Plus (Hydraulic)</li> </ul> 3) Hydrotherapy: <ul style="list-style-type: none"> <li>• Hydro Flex Air Therapy System- Heated</li> </ul> 4) Steps: <ul style="list-style-type: none"> <li>• Two Tier Universal Step</li> </ul> 5) Other Upgrades and Options: <ul style="list-style-type: none"> <li>• GFCI Including Subpanel</li> <li>• I Command System</li> </ul> 6)Moonfall Package Includes: <ul style="list-style-type: none"> <li>• Aquablade Waterfalls</li> <li>• Moonlights</li> </ul>





### Massage Selector/Air Control Diagram



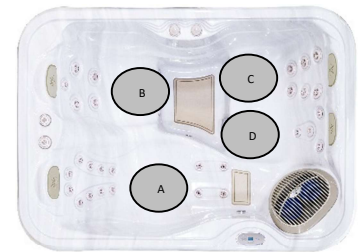
### Seat Depth

A = 26.51" (67.33cm)

B = 26.54" (67.41cm)

C = 25.98" (65.98cm)

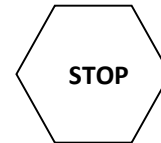
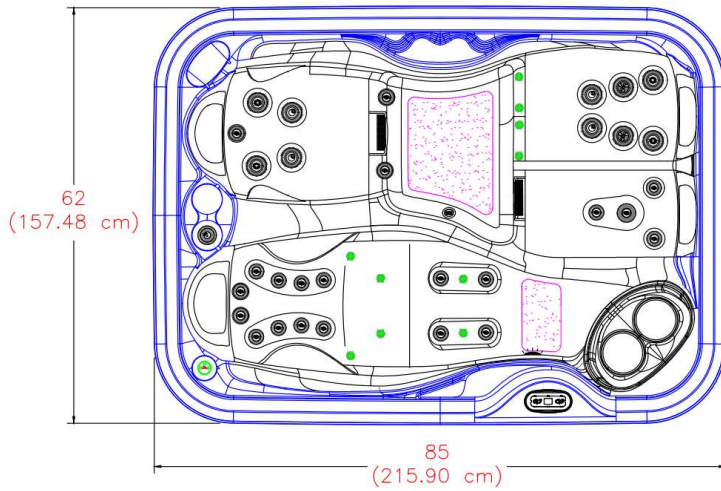
D = 25.98" (65.98cm)



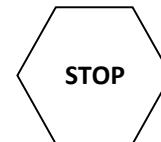
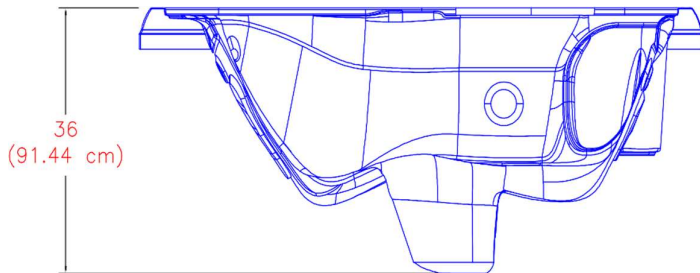
LISTED DIMENSIONS REPRESENT DISTANCE FROM THE TOP OF ACRYLIC TO LOWEST POINT IN THE SEAT. TOLERANCE  $\pm 1/2''$  (0.5CM)



### Dimensions



**IMPORTANT! Always measure each hot tub for exact dimensions BEFORE designing its foundational support and/or decking**



**NOTE:**

Dimensional tolerances are as follows due to variations in manufacturing:

Length / Width / Height(s): +/- 3/8"

Height Variance (side to side): +/- 1/4"





## 2023 Serenity Collection SE4300



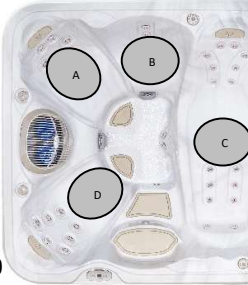
<b>Year:</b>	2023
<b>Model:</b>	Serenity 4300
<b>Size:</b>	85" X 62" X 36" / (216 cm X 157 cm X 91cm)
<b>Series:</b>	Serenity Collection
<b>Main Keypad:</b>	IN. K362 Keypad and Overlay <b>(7005069, 5555334)</b>
<b>Spa Pack and Heater:</b>	North America: 4KW 240V; Europe:3 KW 240VAC <b>Controller GECKO IN.YE-3 NA/EU</b>
<b>Pump #1:</b>	North America (60 Hz): 2- SP, 2 HP, AMPs – 12/ 1 <b>(6505155)</b> Europe (50 Hz): 2- SP, 3 HP, AMPs – 10.0/3.0 <b>(6510041)</b>
<b>Pump #2:</b>	N/A
<b>Circulation Pump:</b>	N/A
<b>31 Total Jets:</b>	20- BALBOA LIFESTREAM 2" DIRECT <b>(6015081)</b> 1- BALBOA LIFESTREAM 2.75" DIRECT <b>(6015082)</b> 4-BALBOA LIFESTREAM 3" DIRECT <b>(6020085)</b> 2-BALBOA LIFESTREAM 3" SPINNER <b>(6020086)</b> 4-BALBOA LIFESTREAM 3" BB SPINNER <b>(6020087)</b>
<b>Air Controls:</b>	(1)- Air Control <b>(4525151)</b>
<b>Diverter:</b>	N/A
<b>Filters:</b>	(1)-SERENITY 50 SQ FT FILTER <b>(4520020)</b> (1)-SERENITY 50 SQ FT FILTER WITH BROMINATOR <b>(4520038)</b>







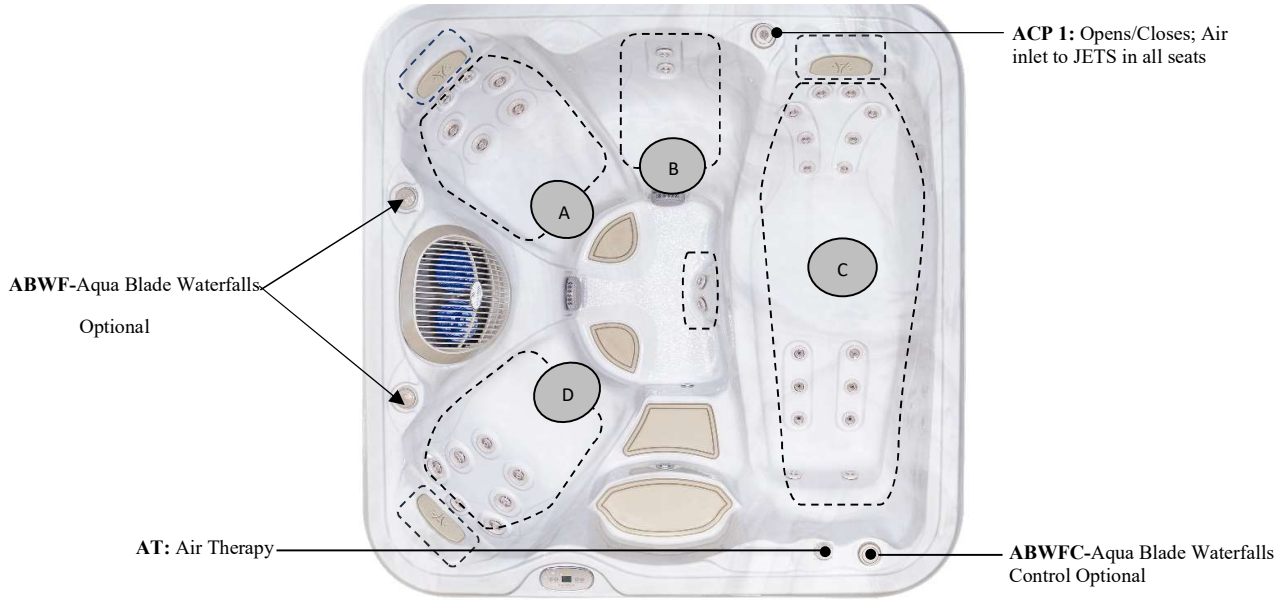
Specification

<b>Seating Capacity</b> .....	4-5 persons	
<b>Dimensions</b> .....	80"X 80" X 36" / (203 cm X 203 cm X 91cm)	
<b>Dry Weight</b> .....	585 lbs / 265 kg	
<b>Filled Weight (Spa Volume)</b> .....	3,176 lbs / 1,441 kg	
<b>Water Capacity (Spa Volume)</b> .....	309 US gallons/ 1176L	
<b>Electronic Controls</b> .....	GECKO-IN. K362 Keypad and overlay	
<b>Pump 1</b> .....	North America (60 Hz): 2- Speed, 4 HP , AMPS 12.0/1.0 Europe (50 Hz): 2- Speed, 3 HP, AMPS – 10.0/3.0	
<b>Pump 2</b> .....	N/A	
<b>Circulation Pump</b> .....	N/A	
<b>Total Jets</b> .....	33	
<b>Seat A Jets</b> .....	(2)-6015081 (2)-6020085; (2)-6020087	
<b>Seat B Jets</b> .....	(2)-6015082	
<b>Seat C Jets</b> .....	(14)-6015081; (2)-6015082	
<b>Seat D Jets</b> .....	(1)-6015081; (2)-6020085; (2)-6020086; (2)-6020087	
<b>Footwell</b> .....	(2)-6015081	
<b>Massage Selectors</b> .....	N/A	
<b>Air Controls</b> .....	1	
<b>Water Management System</b> .....	(2)- 50 SQ. FT Filters behind filter grill	
<b>LED Lighting</b> .....	(1)-20 LED Small Light (lens)	
<b>Synthetic Cabinet Colours</b> .....	Designer Harbor Grey, Designer Driftwood Grey	
<b>Acrylic Colours</b> .....	Silver Marble, Pure White, Alpine Mist, Tuscan Sun, Black Opal and Midnight Canyon	
<b>Headrests</b> .....	N/A	
<b>Waterfalls</b> .....	(2)-Aqua Blade Waterfalls ( <b>Optional – IN MOONFALL PACKAGE ONLY</b> )	
<b>Electrical Requirements</b> .....	North America (60 Hz): 240V, 32 AMPS, 40 AMP GFCI Europe (50 Hz):230V, 16A or suitably rated circuit breaker to comply with local electrical codes, RCD breakers with MC.	
<b>Warranty</b> .....	10/5/3 Year limited	
<b>Options/Special Features</b> .....	1) Water Management: <ul style="list-style-type: none"> <li>• EZ-Pure Ozone System</li> <li>• Pure Water System</li> </ul> 2) Covers: <ul style="list-style-type: none"> <li>• Custom Hydrowise Insulating Cover Colour</li> <li>• Opposite Fold Hardcovers</li> <li>• Cover Remover Standard</li> <li>• Cover Remover LP (Under)</li> <li>• Cover Remover Plus (Hydraulic)</li> </ul> 3) Hydrotherapy: <ul style="list-style-type: none"> <li>• Hydro Flex Air Therapy System- Heated</li> </ul> 4) Steps: <ul style="list-style-type: none"> <li>• Two Tier Universal Step</li> </ul> 5) Other Upgrades and Options: <ul style="list-style-type: none"> <li>• GFCI Including Subpanel</li> <li>• I Command System</li> </ul> 6) Moonfall Package Includes: <ul style="list-style-type: none"> <li>• Aqua blade Waterfalls</li> <li>• Moonlights</li> </ul>	





### Massage Selector/Air Control Diagram



### Seat Depth

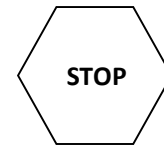
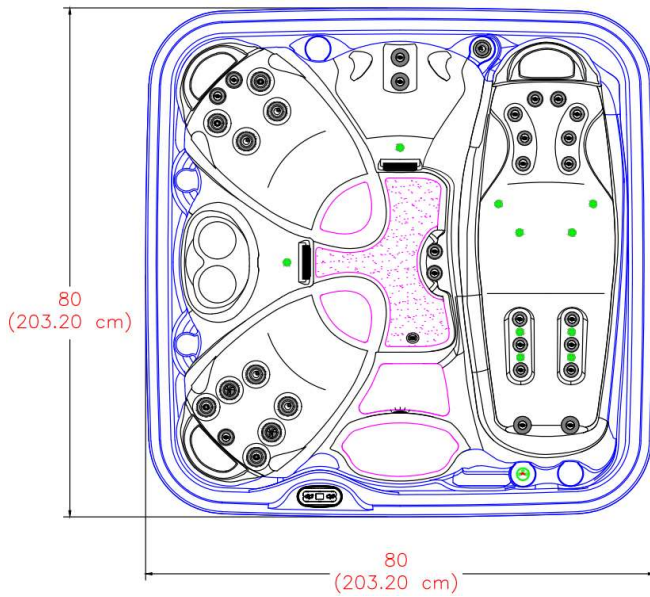
- A = 26.23" (66.62 cm)
- B = 21.40" (54.35 cm)
- C = 26.78" (68.02 cm)
- D = 28.00" (71.12 cm)



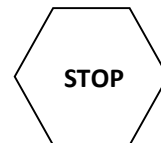
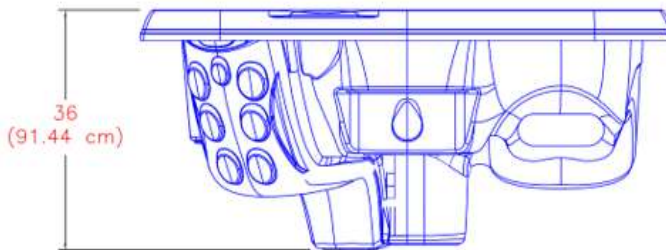
LISTED DIMENSIONS REPRESENT DISTANCE FROM THE TOP OF ACRYLIC TO LOWEST POINT IN THE SEAT. TOLERANCE  $\pm 1/2''$  (0.5CM)



### Dimensions



**IMPORTANT! Always measure each hot tub for exact dimensions BEFORE designing its foundational support and/or decking**



**NOTE:**

Dimensional tolerances are as follows due to variations in manufacturing:

Length / Width / Height(s): +/- 3/8"

Height Variance (side to side): +/- 1/4"



## 2023 Serenity Collection SE4500



<b>Year:</b>	2023
<b>Model:</b>	Serenity 4500
<b>Size:</b>	80" X 80" X 36" / (216 cm X 157 cm X 91cm)
<b>Series:</b>	Serenity Collection
<b>Main Keypad:</b>	IN. K362 Keypad and Overlay <b>(7005069, 5555334)</b>
<b>Spa Pack and Heater:</b>	North America: 4KW 240V; Europe:3 KW 240VAC <b>Controller GECKO IN.YE-3 NA / EU</b>
<b>Pump #1:</b>	North America (60 Hz): 2- SP, 4 HP, AMPs – 12.0/ 1.0 <b>(6505155)</b> Europe (50 Hz): 2- SP, 3 HP, AMPs – 10.0/3.0 <b>(6510041)</b>
<b>Pump #2:</b>	N/A
<b>Circulation Pump:</b>	N/A
<b>33 Total Jets:</b>	19-BALBOA LIFESTREAM 2" DIRECT <b>(6015081)</b> 4-BALBOA LIFESTREAM 2.75" DIRECT <b>(6015082)</b> 4-BALBOA LIFESTREAM 3" DIRECT <b>(6020085)</b> 2-BALBOA LIFESTREAM 3" SPINNER <b>(6020086)</b> 4-BALBOA LIFESTREAM 3" BB SPINNER <b>(6020087)</b>
<b>Air Controls:</b>	(1)- Air Control <b>(4525151)</b>
<b>Diverter:</b>	N/A
<b>Filters:</b>	(1)-SERENITY 50 SQ FT FILTER <b>(4520020)</b> (1)-SERENITY 50 SQ FT FILTER WITH BROMINATOR <b>(4520038)</b>





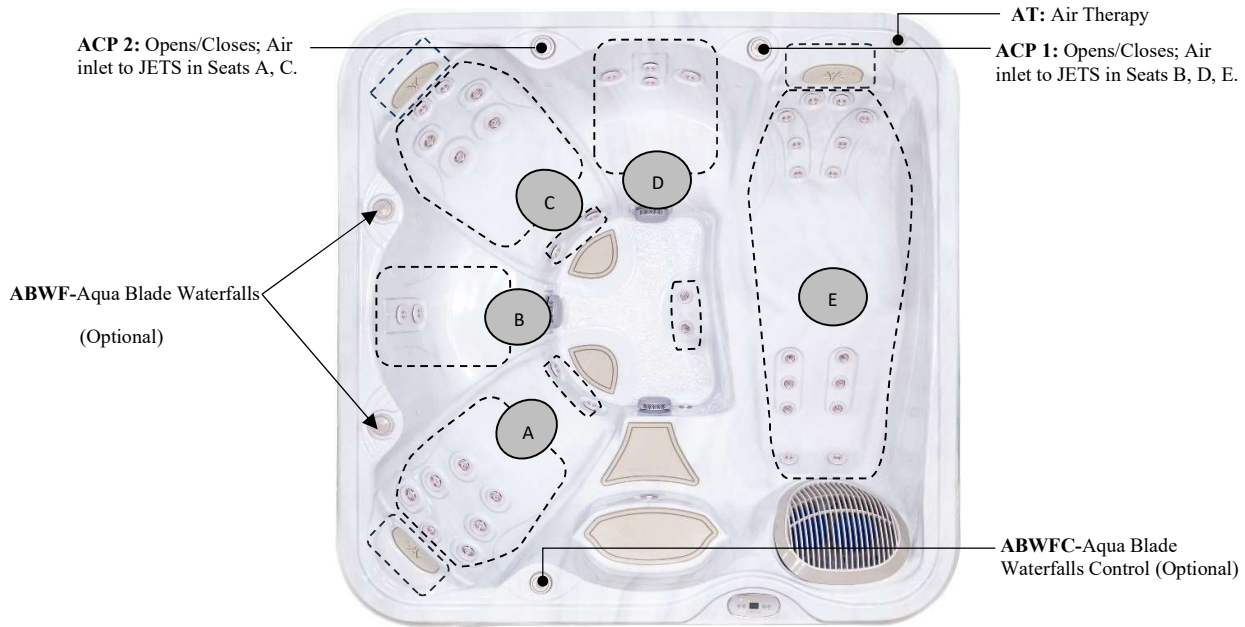
Specification

<b>Seating Capacity</b> .....	5-6 persons
<b>Dimensions</b> .....	85"X 85" X 36" / (216 cm X 216 cm X 91cm)
<b>Dry Weight</b> .....	669 lbs / 304 kg
<b>Filled Weight (Spa Volume)</b> .....	4,048 lbs / 1,837 kg
<b>Water Capacity (Spa Volume)</b> .....	403 US gallons/ 1533L
<b>Electronic Controls</b> .....	GECKO-IN. K362 Keypad and overlay
<b>Pump 1</b> .....	North America (60 Hz): 2- Speed, 4 HP, AMPs 12.0/1.0 Europe (50 Hz): 2- Speed, 3 HP, AMPs – 10.0/3.0
<b>Pump 2</b> .....	North America (60 Hz): 1- Speed, 3 HP, AMPs- 10 Europe (50 Hz): 1- Speed, 2.5 HP, AMPs – 8.6
<b>Circulation Pump</b> .....	N/A
<b>Total Jets</b> .....	41
<b>Seat A Jets</b> .....	(1)-6015081; (2)-6020085; (2)-6020086; (2)-6020087
<b>Seat B Jets</b> .....	(2)-6015082
<b>Seat C Jets</b> .....	(2)-6015081; (2)-6020085; (2)-6020087;
<b>Seat D Jets</b> .....	(4)-6015082
<b>Seat E Jets</b> .....	(14)-6015081; (2)-6015082
<b>Footwell</b> .....	(6)-6015081
<b>Massage Selectors</b> .....	N/A
<b>Air Controls</b> .....	2
<b>Water Management System</b> .....	(2)- 50 SQ. FT Filters behind filter grill
<b>LED Lighting</b> .....	(1)-20 LED Small Light (lens)
<b>Synthetic Cabinet Colours</b> .....	Designer Harbor Grey, Designer Driftwood Grey
<b>Acrylic Colours</b> .....	Silver Marble, Pure White, Alpine Mist, Tuscan Sun, Black Opal and Midnight Canyon
<b>Headrests</b> .....	N/A
<b>Waterfalls</b> .....	(2)-Aqua Blade Waterfalls <b>(Optional- IN MOONFALL PACKAGE ONLY)</b>
<b>Electrical Requirements</b> .....	North America (60 Hz): 240V, 40 AMPs, 50 AMP GFCI Europe (50 Hz):230V, 16A or suitably rated circuit breaker to comply with local electrical codes, RCD breakers with MC.
<b>Warranty</b> .....	10/5/3 Year limited
<b>Options/Special Features</b> .....	1) Water Management: <ul style="list-style-type: none"> <li>• EZ-Pure Ozone System</li> <li>• Pure Water System</li> </ul> 2) Covers: <ul style="list-style-type: none"> <li>• Custom Hydrowise Insulating Cover Colour</li> <li>• Opposite Fold Hardcovers</li> <li>• Cover Remover Standard</li> <li>• Cover Remover LP (Under)</li> <li>• Cover Remover Plus (Hydraulic)</li> </ul> 3) Hydrotherapy: <ul style="list-style-type: none"> <li>• Hydro Flex Air Therapy System- Heated</li> </ul> 4) Steps: <ul style="list-style-type: none"> <li>• Two Tier Universal Step</li> </ul> 5) Other Upgrades and Options: <ul style="list-style-type: none"> <li>• GFCI Including Subpanel</li> <li>• I Command System</li> </ul> 6) Moonfall Package Includes: <ul style="list-style-type: none"> <li>• Aqu blade Waterfalls</li> <li>• Moonlights</li> </ul>





### Massage Selector/Air Control Diagram



### Seat Depth

A = 27.95" (70.93 cm)

D = 21.53" (54.58 cm)

B = 21.54" (54.71 cm)

E = 26.76" (67.97 cm)

C = 26.00" (66.04 cm)

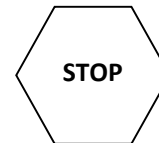
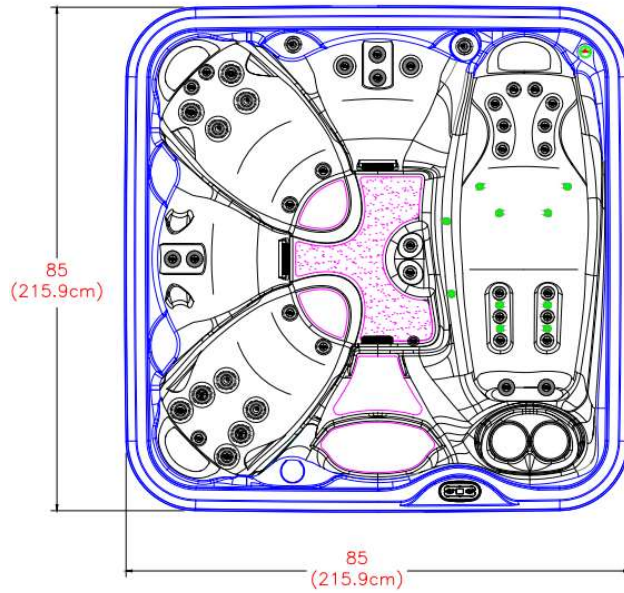


LISTED DIMENSIONS REPRESENT DISTANCE FROM THE TOP OF ACRYLIC TO LOWEST POINT IN THE SEAT. TOLERANCE ±1/2" (0.5CM)

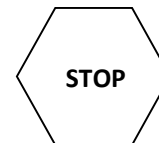
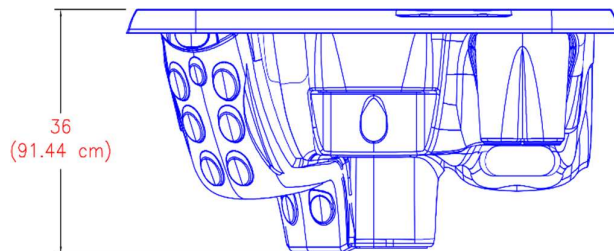




Dimensions



**IMPORTANT! Always measure each hot tub for exact dimensions BEFORE designing its foundational support and/or decking**



**NOTE:**

Dimensional tolerances are as follows due to variations in manufacturing:

Length / Width / Height(s): +/- 3/8"

Height Variance (side to side): +/- 1/4"





## 2023 Serenity Collection SE5900



<b>Year:</b>	2023
<b>Model:</b>	Serenity 5900
<b>Size:</b>	85"X 85" X 36" / (216 cm X 216 cm X 91cm)
<b>Series:</b>	Serenity Collection
<b>Main Keypad:</b>	IN. K362 Keypad and Overlay <b>(7005080, 5555350)</b>
<b>Spa Pack and Heater:</b>	North America: 4KW 240V; Europe:3 KW 240VAC <b>Controller GECKO IN.YE-3 NA / EU</b>
<b>Pump #1:</b>	North America (60 Hz): 2- SP, 4 HP, AMPs – 12.0/ 1.0 <b>(6505155)</b> Europe (50 Hz): 2- SP, 3 HP, AMPs – 10.0/3.0 <b>(6510041)</b>
<b>Pump #2:</b>	North America (60 Hz): 1- SP, 3 HP, AMPs – 10.0 <b>(6505161)</b> Europe (50 Hz): 1-SP, 2.5 HP, AMPs- 8.6 <b>(6510039)</b>
<b>Circulation Pump:</b>	N/A
<b>41 Total Jets:</b>	23-BALBOA LIFESTREAM 2" DIRECT <b>(6015081)</b> 8-BALBOA LIFESTREAM 2.75" DIRECT <b>(6015082)</b> 4-BALBOA LIFESTREAM 3" DIRECT <b>(6020085)</b> 2-BALBOA LIFESTREAM 3" SPINNER <b>(6020086)</b> 4-BALBOA LIFESTREAM 3" BB SPINNER <b>(6020087)</b>
<b>Air Controls:</b>	(2)- Air Control <b>(4525151)</b>
<b>Diverter:</b>	<b>N/A</b>
<b>Filters:</b>	(1)- SERENITY 50 SQ FT FILTER <b>(4520020)</b> (1)- SERENITY 50 SQ FT FILTER WITH BROMINATOR <b>(4520038)</b>





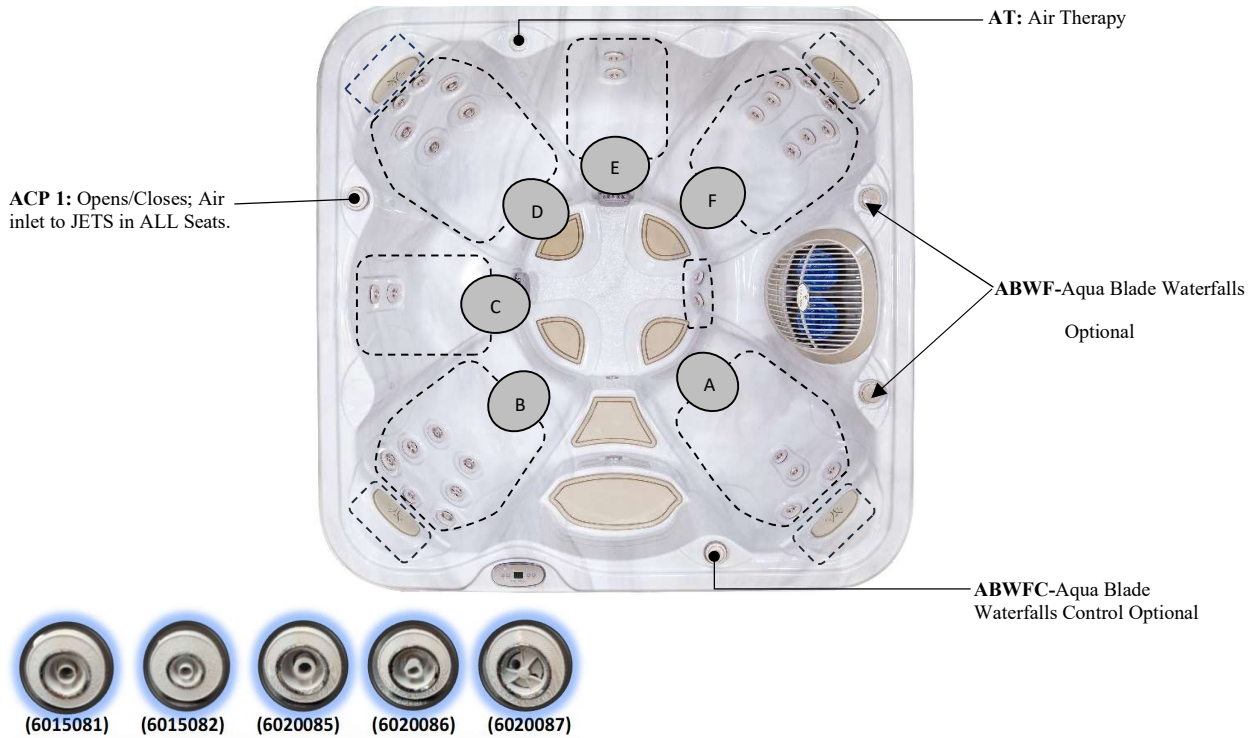
Specification

<b>Seating Capacity.....</b>	6-7 persons
<b>Dimensions.....</b>	80"X 80" X 36" / (203 cm X 203 cm X 91cm)
<b>Dry Weight.....</b>	585 lbs / 265 kg
<b>Filled Weight (Spa Volume) .....</b>	3,176 lbs / 1,441 kg
<b>Water Capacity (Spa Volume) .....</b>	309 US gallons/ 1,176L
<b>Electronic Controls.....</b>	GECKO-IN. K362 Keypad and overlay
<b>Pump 1.....</b>	North America (60 Hz): 2- Speed, 4 HP, AMPs 12.0/1.0 Europe (50 Hz): 2- Speed, 3 HP, AMPs – 10.0/3.0
<b>Pump 2.....</b>	N/A
<b>Circulation Pump.....</b>	N/A
<b>Total Jets.....</b>	31
<b>Seat A Jets.....</b>	(3)-6015082; (1)-6015081
<b>Seat B Jets.....</b>	(1)-6015081; (2)-6020085; (2)-6020086; (2)-6020087
<b>Seat C Jets.....</b>	(2)-6015082
<b>Seat D Jets.....</b>	(2)-6015081; (2)-6020085; (2)-6020087
<b>Seat E Jets.....</b>	(2)-6015082
<b>Seat F Jets.....</b>	(2)-6015081; (6)-6015082
<b>Footwell .....</b>	(2)-6015081
<b>Massage Selectors.....</b>	N/A
<b>Air Controls.....</b>	1
<b>Water Management System.....</b>	(2)- 50 SQ. FT Filters behind filter grill
<b>LED Lighting.....</b>	(1)-20 LED Small Light (lens)
<b>Synthetic Cabinet Colours.....</b>	Designer Harbor Grey, Designer Driftwood Grey
<b>Acrylic Colours.....</b>	Silver Marble, Pure White, Alpine Mist, Tuscan Sun, Black Opal and Midnight Canyon
<b>Headrests.....</b>	N/A
<b>Waterfalls.....</b>	(2)-Aqua Blade Waterfalls <b>(Optional – IN MOONFALL PACKAGE ONLY)</b>
<b>Electrical Requirements.....</b>	North America (60 Hz): 240V, 32 AMPs, 40 AMP GFCI Europe (50 Hz):230V, 16A or suitably rated circuit breaker to comply with local electrical codes, RCD breakers with MC.
<b>Warranty.....</b>	10/5/3 Year limited
<b>Options/Special Features.....</b>	1) Water Management: <ul style="list-style-type: none"> <li>• EZ-Pure Ozone System</li> <li>• Pure Water System</li> </ul> 2) Covers: <ul style="list-style-type: none"> <li>• Custom Hydrowise Insulating Cover Colour</li> <li>• Opposite Fold Hardcovers</li> <li>• Cover Remover Standard</li> <li>• Cover Remover LP (Under)</li> <li>• Cover Remover Plus (Hydraulic)</li> </ul> 3) Hydrotherapy: <ul style="list-style-type: none"> <li>• Hydro Flex Air Therapy System- Heated</li> </ul> 4) Steps: <ul style="list-style-type: none"> <li>• Two Tier Universal Step</li> </ul> 5) Other Upgrades and Options: <ul style="list-style-type: none"> <li>• GFCI Including Subpanel</li> <li>• I Command System</li> </ul> 6) Moonfall Package Includes: <ul style="list-style-type: none"> <li>• Aquablade Waterfalls</li> <li>• Moonlights</li> </ul>





### Massage Selector/Air Control Diagram



### Seat Depth

A = 26.15" (66.42 cm)

B = 25.96" (65.93 cm)

C = 21.52" (54.66 cm)

D = 27.75" (70.48 cm)

E = 21.52" (54.66 cm)

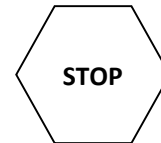
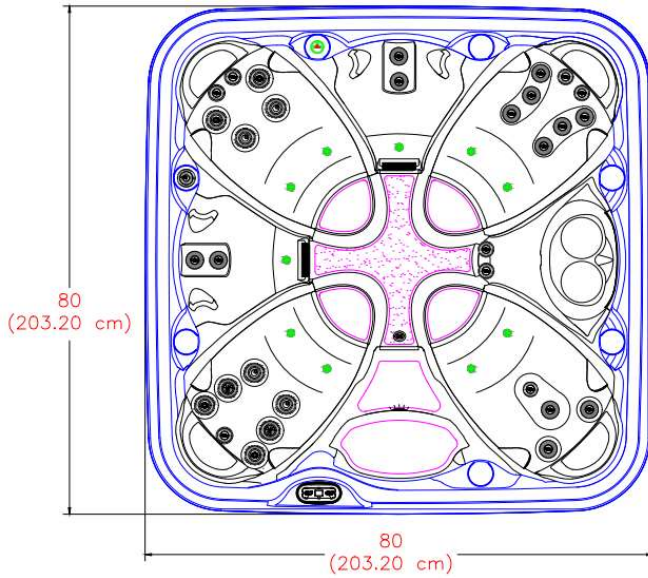
F = 27.85" (70.73 cm)



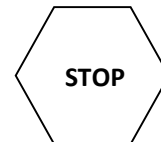
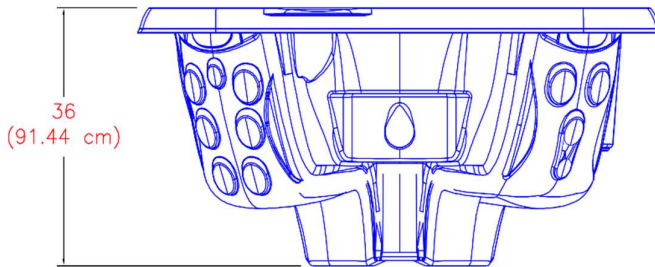
LISTED DIMENSIONS REPRESENT DISTANCE FROM THE TOP OF ACRYLIC TO LOWEST POINT IN THE SEAT. TOLERANCE ±1/2" (0.5CM)



### Dimensions



**IMPORTANT! Always measure each hot tub for exact dimensions BEFORE designing its foundational support and/or decking**



**NOTE:**

Dimensional tolerances are as follows due to variations in manufacturing:

Length / Width / Height(s): +/- 3/8"

Height Variance (side to side): +/- 1/4"



## 2023 Serenity Collection SE6600



<b>Year:</b>	2023
<b>Model:</b>	Serenity 6600
<b>Size:</b>	80"X 80" X 36" / (203 cm X 203 cm X 91cm)
<b>Series:</b>	Serenity Collection
<b>Main Keypad:</b>	IN. K362 Keypad and Overlay <b>(7005069, 5555334)</b>
<b>Spa Pack and Heater:</b>	North America: 4KW 240V; Europe:3 KW 240VAC <b>Controller GECKO IN.YE-3 NA / EU</b>
<b>Pump #1:</b>	North America (60 Hz): 2- SP, 4 HP, AMPs – 12.0/ 1.0 <b>(6505155)</b> Europe (50 Hz): 2- SP, 3 HP, AMPs – 10.0/3.0 <b>(6510041)</b>
<b>Pump #2:</b>	N/A
<b>Circulation Pump:</b>	N/A
<b>31 Total Jets:</b>	8-BALBOA LIFESTREAM 2" DIRECT <b>(6015081)</b> 13-BALBOA LIFESTREAM 2.75" DIRECT <b>(6015082)</b> 4-BALBOA LIFESTREAM 3" DIRECT <b>(6020085)</b> 2-BALBOA LIFESTREAM 3" SPINNER <b>(6020086)</b> 4-BALBOA LIFESTREAM 3" BB SPINNER <b>(6020087)</b>
<b>Air Controls:</b>	(1)- Air Control <b>(4525151)</b>
<b>Diverter:</b>	N/A
<b>Filters:</b>	(1)- SERENITY 50 SQ. FT FILTER <b>(4520020)</b> (1)- SERENITY 50 SQ. FT FILTER WITH BROMINATOR <b>(4520038)</b>





Specification

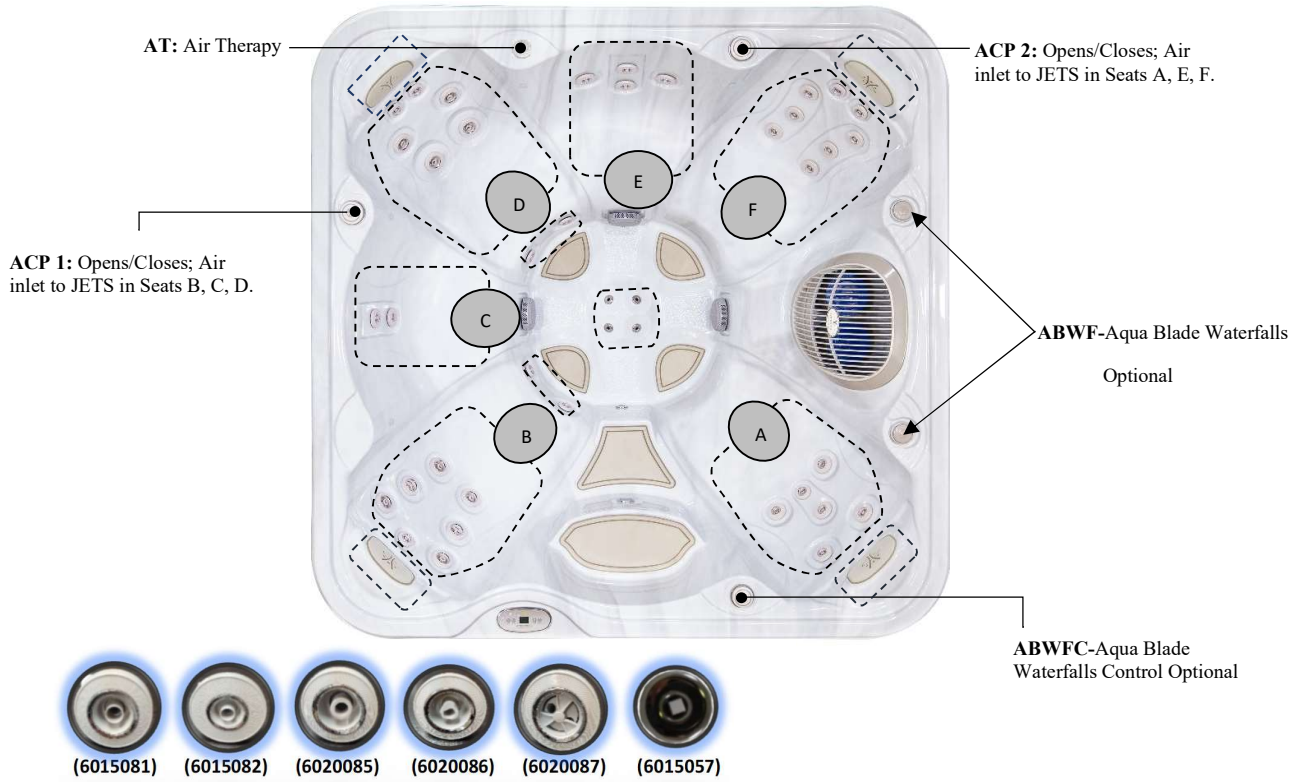
<b>Seating Capacity</b> .....	6-7 persons
<b>Dimensions</b> .....	85"X 85" X 36" / (216 cm X 216 cm X 91cm)
<b>Dry Weight</b> .....	655 lbs / 297 kg
<b>Filled Weight (Spa Volume)</b> .....	3,807 lbs / 1,727 kg
<b>Water Capacity (Spa Volume)</b> .....	376 US gallons/ 1,430 L
<b>Electronic Controls</b> .....	GECKO-IN. K362 Keypad and overlay
<b>Pump 1</b> .....	North America (60 Hz): 2- Speed, 4 HP, AMPs 12.0/1.0 Europe (50 Hz): 2- Speed, 3 HP, AMPs – 10.0/3.0
<b>Pump 2</b> .....	North America (60 Hz): 1- Speed, 3 HP, AMPs- 10 Europe (50 Hz): 1- Speed, 2.5 HP, AMPs – 8.6
<b>Circulation Pump</b> .....	N/A
<b>Total Jets</b> .....	41
<b>Seat A Jets</b> .....	(5)-6015082; (1)-6015081
<b>Seat B Jets</b> .....	(1)-6015081; (2)-6020085; (2)-6020086; (2)-6020087
<b>Seat C Jets</b> .....	(2)-6015082
<b>Seat D Jets</b> .....	(2)-6015081; (2)-6020085; (2)-6020087
<b>Seat E Jets</b> .....	(4)-6015082
<b>Seat F Jets</b> .....	(2)-6015081; (6)-6015082
<b>Footwell</b> .....	(4)-6015081; (4)-6015057
<b>Massage Selectors</b> .....	N/A
<b>Air Controls</b> .....	2
<b>Water Management System</b> .....	(2)- 50 SQ. FT Filters behind filter grill
<b>LED Lighting</b> .....	(1)-20 LED Small Light (lens)
<b>Synthetic Cabinet Colours</b> .....	Designer Harbor Grey, Designer Driftwood Grey
<b>Acrylic Colours</b> .....	Silver Marble, Pure White, Alpine Mist, Tuscan Sun, Black Opal and Midnight Canyon
<b>Headrests</b> .....	N/A
<b>Waterfalls</b> .....	(2)-Aqua Blade Waterfalls ( <b>Optional- IN MOONFALL PACKAGE ONLY</b> )
<b>Electrical Requirements</b> .....	North America (60 Hz): 240V, 40 AMPs, 50 AMP GFCI Europe (50 Hz):230V, 16A or suitably rated circuit breaker to comply with local electrical codes, RCD breakers with MC.
<b>Warranty</b> .....	10/5/3 Year limited
<b>Options/Special Features</b> .....	1) Water Management: <ul style="list-style-type: none"> <li>• EZ-Pure Ozone System</li> <li>• Pure Water System</li> </ul> 2) Covers: <ul style="list-style-type: none"> <li>• Custom Hydrowise Insulating Cover Colour</li> <li>• Opposite Fold Hardcovers</li> <li>• Cover Remover Standard</li> <li>• Cover Remover LP (Under)</li> <li>• Cover Remover Plus (Hydraulic)</li> </ul> 3) Hydrotherapy: <ul style="list-style-type: none"> <li>• Hydro Flex Air Therapy System- Heated</li> </ul> 4) Steps: <ul style="list-style-type: none"> <li>• Two Tier Universal Step</li> </ul> 5) Other Upgrades and Options: <ul style="list-style-type: none"> <li>• GFCI Including Subpanel</li> <li>• I Command System</li> </ul> 6) Moonfall Package Includes: <ul style="list-style-type: none"> <li>• Aquablade Waterfalls</li> <li>• Moonlights</li> </ul>







### Massage Selector/Air Control Diagram



### Seat Depth

A = 26.14" (66.39 cm)

E= 21.50" (54.61 cm)

B = 27.95" (70.99 cm)

F= 28.00" (71.12 cm)

C = 21.54" (54.71 cm)

D = 26.11" (66.31 cm)

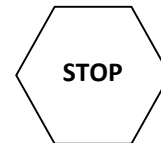
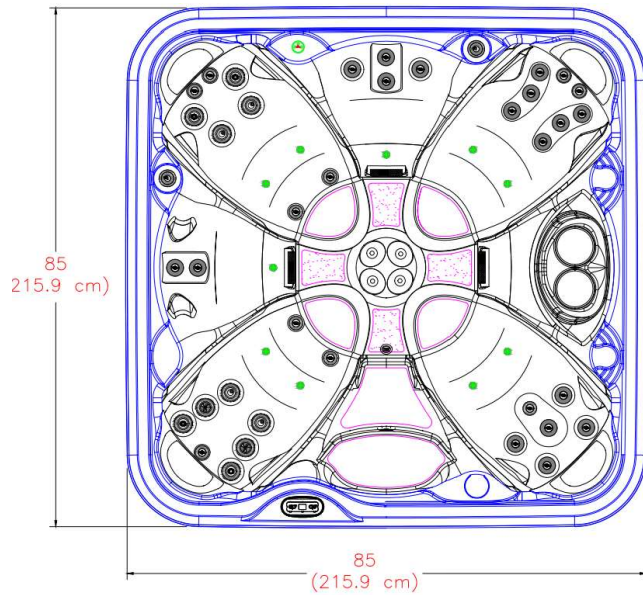


LISTED DIMENSIONS REPRESENT DISTANCE FROM THE TOP OF ACRYLIC TO LOWEST POINT IN THE SEAT. TOLERANCE ±1/2" (0.5CM)

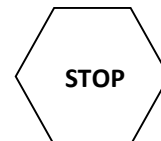
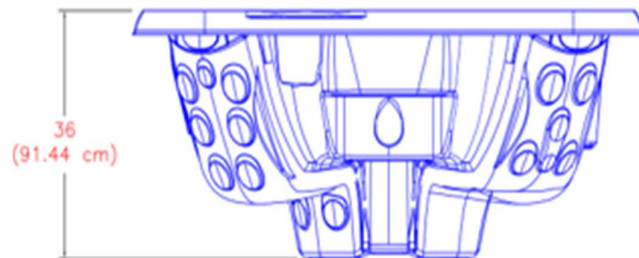




### Dimensions



**IMPORTANT! Always measure each hot tub for exact dimensions BEFORE designing its foundational support and/or decking**



**NOTE:**

Dimensional tolerances are as follows due to variations in manufacturing:

Length / Width / Height(s): +/- 3/8"

Height Variance (side to side): +/- 1/4"



## 2023 Serenity Collection SE6800



<b>Year:</b>	2023
<b>Model:</b>	Serenity 6800
<b>Size:</b>	85" X 85" X 36" / (216 cm X 216 cm X 91 cm)
<b>Series:</b>	Serenity Collection
<b>Main Keypad:</b>	IN. K362 Keypad and Overlay <b>(7005080, 5555350)</b>
<b>Spa Pack and Heater:</b>	North America: 4KW 240V; Europe:3 KW 240VAC <b>Controller GECKO IN.YE-3 NA / EU</b>
<b>Pump #1:</b>	North America (60 Hz): 2- SP, 4 HP, AMPs – 12.0/ 1.0 <b>(6505155)</b> Europe (50 Hz): 2- SP, 3 HP, AMPs – 10.0/3.0 <b>(6510041)</b>
<b>Pump #2:</b>	North America (60 Hz): 1-SP, 3-HP, AMPs- 10 <b>(6505161)</b> Europe (50 Hz): 1-SP, 2.5 HP, AMPs- 8.6 <b>(6510039)</b>
<b>Circulation Pump:</b>	N/A
<b>41 Total Jets:</b>	10-BALBOA LIFESTREAM 2" DIRECT <b>(6015081)</b> 17-BALBOA LIFESTREAM 2.75" DIRECT <b>(6015082)</b> 4-BALBOA LIFESTREAM 3" DIRECT <b>(6020085)</b> 2-BALBOA LIFESTREAM 3" SPINNER <b>(6020086)</b> 4-BALBOA LIFESTREAM 3" BB SPINNER <b>(6020087)</b> 4-CMP EURO JET FOOT <b>(6015057)</b>
<b>Air Controls:</b>	(2)- Air Control <b>(4525151)</b>
<b>Diverter:</b>	N/A
<b>Filters:</b>	(1)- SERENITY 50 SQ FT FILTER <b>(4520020)</b> (1)- SERENITY 50 SQ FT FILTER WITH BROMINATOR <b>(4520038)</b>





Specification

<b>Seating Capacity</b> .....	6-7 persons
<b>Dimensions</b> .....	91"X 91" X 36" / (231 cm X 231 cm X 91cm)
<b>Dry Weight</b> .....	712 lbs / 323 kg
<b>Filled Weight (Spa Volume)</b> .....	4,308 lbs / 1,955 kg
<b>Water Capacity (Spa Volume)</b> .....	429 US gallons/ 1,632 L
<b>Electronic Controls</b> .....	GECKO-IN. K362 Keypad and overlay
<b>Pump 1</b> .....	North America (60 Hz): 2- Speed, 4 HP, AMPs 12.0/1.0
	Europe (50 Hz): 2- Speed, 3 HP, AMPs – 10.0/3.0
<b>Pump 2</b> .....	North America (60 Hz): 1- Speed, 3 HP, AMPs- 10
	Europe (50 Hz): 1- Speed, 2.5 HP, AMPs – 8.6
<b>Circulation Pump</b> .....	N/A
<b>Total Jets</b> .....	51
<b>Seat A Jets</b> .....	(4)-6015082
<b>Seat B Jets</b> .....	(1)-6015081; (2)-6020085; (2)-6020086; (2)-6020087
<b>Seat C Jets</b> .....	(4)-6015082
<b>Seat D Jets</b> .....	(2)-6015081; (2)-6020085; (2)-6020087
<b>Seat E Jets</b> .....	(1)-6015081; (5)-6015082
<b>Seat F Jets</b> .....	(14)-6015081; (2)-6015082
<b>Footwell</b> .....	(8)-6015081
<b>Massage Selectors</b> .....	N/A
<b>Air Controls</b> .....	2
<b>Water Management System</b> .....	(2)- 50 SQ. FT Filters behind filter grill
<b>LED Lighting</b> .....	(1)-20 LED Small Light (lens),
<b>Synthetic Cabinet Colours</b> .....	Designer Harbor Grey, Designer Driftwood Grey
<b>Acrylic Colours</b> .....	Silver Marble, Pure White, Alpine Mist, Tuscan Sun, Black Opal and Midnight Canyon
<b>Headrests</b> .....	N/A
<b>Waterfalls</b> .....	(2)-Aqua Blade Waterfalls <b>(Optional – IN MOONFALL PACKAGE ONLY)</b>
<b>Electrical Requirements</b> .....	North America (60 Hz): 240V, 40 AMPs, 50 AMP GFCI Europe (50 Hz):230V, 16A or suitably rated circuit breaker to comply with local electrical codes, RCD breakers with MC. 10/5/3 Year limited
<b>Warranty</b> .....	
<b>Options/Special Features</b> .....	1) Water Management: <ul style="list-style-type: none"> <li>• EZ-Pure Ozone System</li> <li>• Pure Water System</li> </ul> 2) Covers: <ul style="list-style-type: none"> <li>• Custom Hydrowise Insulating Cover Colour</li> <li>• Opposite Fold Hardcovers</li> <li>• Cover Remover Standard</li> <li>• Cover Remover LP (Under)</li> <li>• Cover Remover Plus (Hydraulic)</li> </ul> 3) Hydrotherapy: <ul style="list-style-type: none"> <li>• Hydro Flex Air Therapy System- Heated</li> </ul> 4) Steps: <ul style="list-style-type: none"> <li>• Two Tier Universal Step</li> </ul> 5) Other Upgrades and Options: <ul style="list-style-type: none"> <li>• GFCI Including Subpanel</li> <li>• I Command System</li> </ul> 6) Moonfall Package Includes: <ul style="list-style-type: none"> <li>• Aquablade Waterfalls</li> <li>• Moonlights</li> </ul>





### Massage Selector/Air Control Diagram



### Seat Depth

A = 25.08" (63.70 cm)  
 B = 27.47" (69.77 cm)  
 C = 24.95" (63.37 cm)  
 D = 27.71" (70.38 cm)

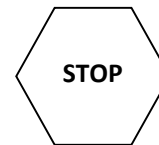
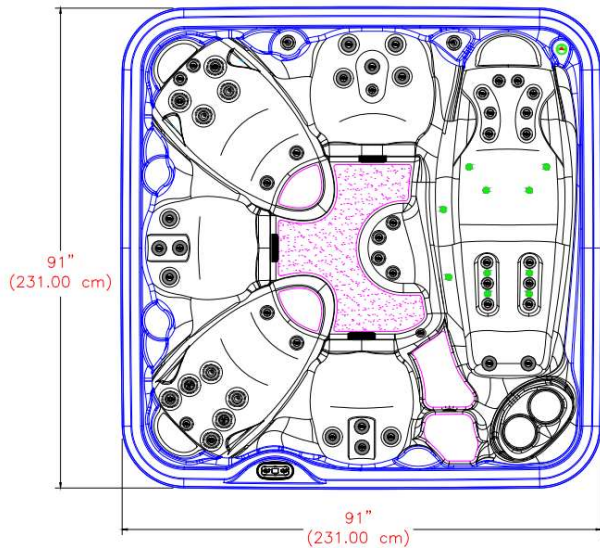
E = 25.02" (63.55 cm)  
 F = 26.26" (66.70 cm)



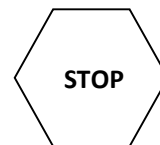
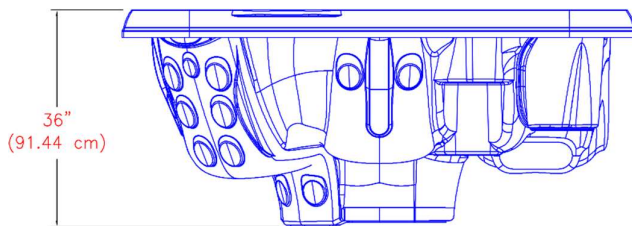
LISTED DIMENSIONS REPRESENT DISTANCE FROM THE TOP OF ACRYLIC TO LOWEST POINT IN THE SEAT. TOLERANCE ±1/2" (0.5CM)



### Dimensions



**IMPORTANT! Always measure each hot tub for exact dimensions BEFORE designing its foundational support and/or decking**



**NOTE:**

Dimensional tolerances are as follows due to variations in manufacturing:

Length / Width / Height(s): +/- 3/8"

Height Variance (side to side): +/- 1/4"



## 2023 Serenity Collection SE6900



<b>Year:</b>	2023
<b>Model:</b>	Serenity 6900
<b>Size:</b>	91" X 91" X 36" / (231 cm X 231 cm X 91cm)
<b>Series:</b>	Serenity Collection
<b>Main Keypad:</b>	IN. K362 Keypad and overlay <b>(7005080,5555350)</b>
<b>Spa Pack and Heater:</b>	North America: 4KW 240V; Europe:3 KW 240VAC <b>Controller GECKO IN.YE-3 NA/EU</b>
<b>Pump #1:</b>	North America (60 Hz): 2- SP, 4 HP, AMPs – 12.0/ 1.0 <b>(6505155)</b> Europe (50 Hz): 2- SP, 3 HP, AMPs – 10.0/3.0 <b>(6510041)</b>
<b>Pump #2:</b>	North America (60 Hz): 1-SP, 3-HP, AMPs- 10 <b>(6505161)</b> Europe (50 Hz): 1-SP, 2.5 HP, AMPs- 8.6 <b>(6510039)</b>
<b>Circulation Pump:</b>	N/A
<b>51 Total Jets:</b>	26-BALBOA LIFESTREAM 2" DIRECT <b>(6015081)</b> 15-BALBOA LIFESTREAM 2.75" DIRECT <b>(6015082)</b> 4-BALBOA LIFESTREAM 3" DIRECT <b>(6020085)</b> 2-BALBOA LIFESTREAM 3" SPINNER <b>(6020086)</b> 4-BALBOA LIFESTREAM 3" BB SPINNER <b>(6020087)</b>
<b>Air Controls:</b>	(2)- Air Control <b>(4525151)</b>
<b>Diverter:</b>	<b>N/A</b>
<b>Filters:</b>	(1)- SERENITY 50 SQ FT FILTER <b>(4520020)</b> (1)- SERENITY 50 SQ FT FILTER WITH BROMINATOR <b>(4520038)</b>

